

AC Surge Protector SPD APEX Module 240 Vac MOV 30 kA L3 (No Relay)



1000-717-6

APEX 240V Delta L3 MOV Module, No Relay

Features

- Replacement Modules for APEX Series

Applications

- Electrical Panelboards
- Industrial Automation
- Communications Base Stations
- IT & Data Centers
- Switchgear
- Motor Control Centers
- Automatic Transfer Switches
- Wastewater Treatment
- Oil & Gas
- LED Lighting
- Schools
- Hospitals

Electrical Specifications

Description	Minimum	Typical	Maximum	Units
Service Voltages		240		Vac
Maximum Continuous Operating Voltage (MCOV)				
L - L			275	Vac

Surge Protection Specification

Description	Minimum	Typical	Maximum	Units
Surge Protection Technology		MOV		
Protection Modes		L-L		
8/20 μ s Surge Current			30	kA
Nominal Discharge Current Rating (In)		10		kA
Response Time			25	ns

Mechanical Specifications

Size			
Height	0.97 in	[24.64 mm]	
Width	8.22 in	[208.79 mm]	
Depth	4.97 in	[126.24 mm]	
Weight	0.78 lbs	[353.8 g]	

Click the following link (or enter part number in "SEARCH" on website) to obtain additional part information including price, inventory and certifications:
[AC Surge Protector SPD APEX Module 240 Vac MOV 30 kA L3 \(No Relay\) 1000-717-6](#)

AC Surge Protector SPD APEX Module 240 Vac MOV 30 kA L3 (No Relay)

1000-717-6
APEX 240V Delta L3 MOV Module, No Relay



Housing Material and Plating

Noryl N190

Environmental Specifications

Temperature Range (Operational)

-30 to +65 deg C

Humidity

90% non-condensing

Transtector Systems specializes in protection of highly sensitive, low voltage equipment through its patented, non-degrading silicon diode technology and custom filters. Our power quality expertise translates into a diverse product offering including AC, DC, and signal applications as well as integrated cabinets, power distribution panels and EMP hardened devices.

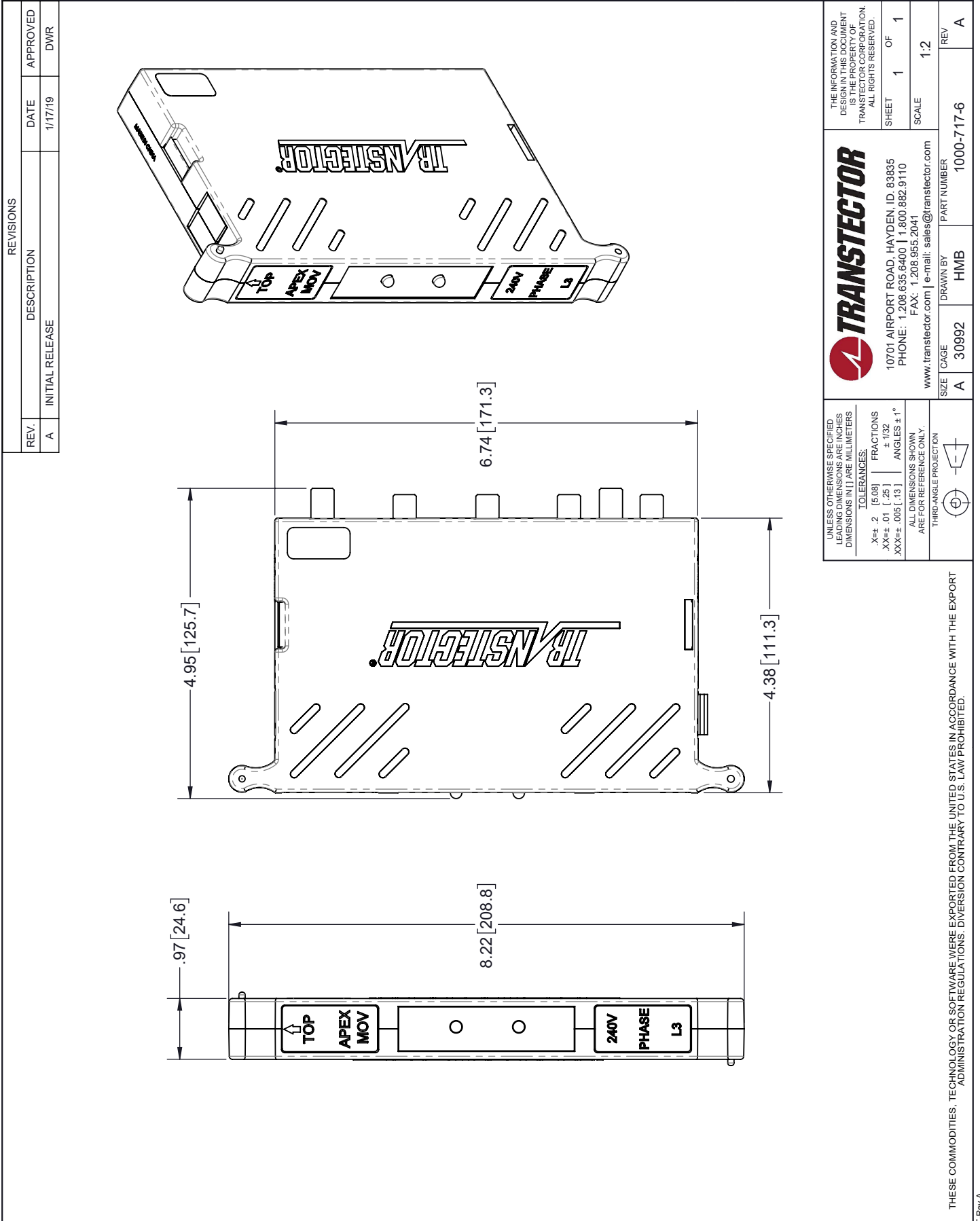
Click the following link (or enter part number in "SEARCH" on website) to obtain additional part information including price, inventory and certifications: [AC Surge Protector SPD APEX Module 240 Vac MOV 30 kA L3 \(No Relay\) 1000-717-6](#)

URL: <https://www.transtector.com/ac-surge-protector-spd-apex-module-240-1000-717-6-p.aspx>

The information contained in this document is accurate to the best of our knowledge and representative of the part described herein. It may be necessary to make modifications to the part and/or the documentation of the part, in order to implement improvements. Transtector reserves the right to make such changes as required. Unless otherwise stated, all specifications are nominal. Transtector does not make any representation or warranty regarding the suitability of the part described herein for any particular purpose, and Transtector does not assume any liability arising out of the use of any part or documentation.

AC Surge Protector SPD APEX Module 240 Vac MOV 30 kA L3 (No Relay)

1000-717-6 CAD Drawing



REVISIONS		
REV.	DESCRIPTION	DATE
A	INITIAL RELEASE	1/17/19
		APPROVED
		DWR

UNLESS OTHERWISE SPECIFIED LEADING DIMENSIONS ARE INCHES DIMENSIONS IN [] ARE MILLIMETERS

TOLERANCES:
 .X±.2 [5.08] FRACTIONS ±.132
 XX±.01 [.25] ANGLES ±1°
 XXX±.005 [.13]

ALL DIMENSIONS SHOWN ARE FOR REFERENCE ONLY.
 THIRD-ANGLE PROJECTION

THE INFORMATION AND DESIGN IN THIS DOCUMENT IS THE PROPERTY OF TRANSECTOR CORPORATION. ALL RIGHTS RESERVED.

TRANSECTOR
 10701 AIRPORT ROAD, HAYDEN, ID, 83835
 PHONE: 1.208.635.6400 | 1.800.882.9110
 FAX: 1.208.955.2041
 www.transector.com | e-mail: sales@transector.com

SHEET 1 OF 1
 SCALE 1:2

SIZE CAGE DRAWN BY PART NUMBER REV
 A 30992 HMB 1000-717-6 A

THESE COMMODITIES, TECHNOLOGY OR SOFTWARE WERE EXPORTED FROM THE UNITED STATES IN ACCORDANCE WITH THE EXPORT ADMINISTRATION REGULATIONS. DIVERSION CONTRARY TO U.S. LAW PROHIBITED.

T-Rev A