

## Data Surge Protector SPD TSP 9002 Indoor RS-422 Wired Leads SASD

**1100-055-1**  
 TSP 9002



### Features

- 100% SASD Protection
- Low Frequency DC, Communications Pairs
- Wired Lead Connectivity

### Applications

- RS-422 Networks
- Telecommunications Base Stations
- WISP/ISP
- IT & Data Centers
- Point-to-Point Links
- Control Lines and Sense Loops
- Oil & Gas

### Description

Data surge protector (also known as SPD or lightning protector) 1100-055-1 from Transtector is an indoor style SPD that utilizes state of the art SASD technology to protect critical equipment in RS-422 protocol data networks while remaining transparent to data throughput. This surge protector provides effective protection against electrical transient surges that are generated both by external lightning events and by internal switching events and supports long-term system reliability by absorbing high amounts of transient energy while maintaining a very low clamping voltage. Transtector Data Signal surge protectors are available in stock with same day shipping.

### Electrical Specifications

Description	Minimum	Typical	Maximum	Units
Connectors		Wired Leads		
Data Protocols		RS-422		
Data Rate			1.5	Mb/s
Series Impedance (Data)			33	Ohms
Vdc Rating (Data)		24	24	Vdc

### Surge Protection Specification

Description	Minimum	Typical	Maximum	Units
Surge Protection Technology		SASD		
Protection Modes		L-L, L-G		
8/20 $\mu$ s Surge Current				
L-G			0.5	kA
L-L			0.5	kA

Click the following link (or enter part number in "SEARCH" on website) to obtain additional part information including price, inventory and certifications:  
[Data Surge Protector SPD TSP 9002 Indoor RS-422 Wired Leads SASD 1100-055-1](#)

## Data Surge Protector SPD TSP 9002 Indoor RS-422 Wired Leads SASD

**1100-055-1**  
 TSP 9002



.Vpl 8/20 $\mu$ s			
L-G	33 @ 500A		Vpk
L-L	33 @ 500A		Vpk
Response Time		5	ns

### Mechanical Specifications

#### Size

Height	2.2 in	[55.88 mm]
Width	3.16 in	[80.26 mm]
Depth	0.88 in	[22.35 mm]
Weight	0.15 lbs	[68.04 g]

### Environmental Specifications

Operating Temperature	-30 to +65 deg C
Storage Temperature	-40 to +75 deg C

Environmental Protection Rating	IP20
---------------------------------	------

### Installation

Mount Type	Wall
Grounding	Spade connector

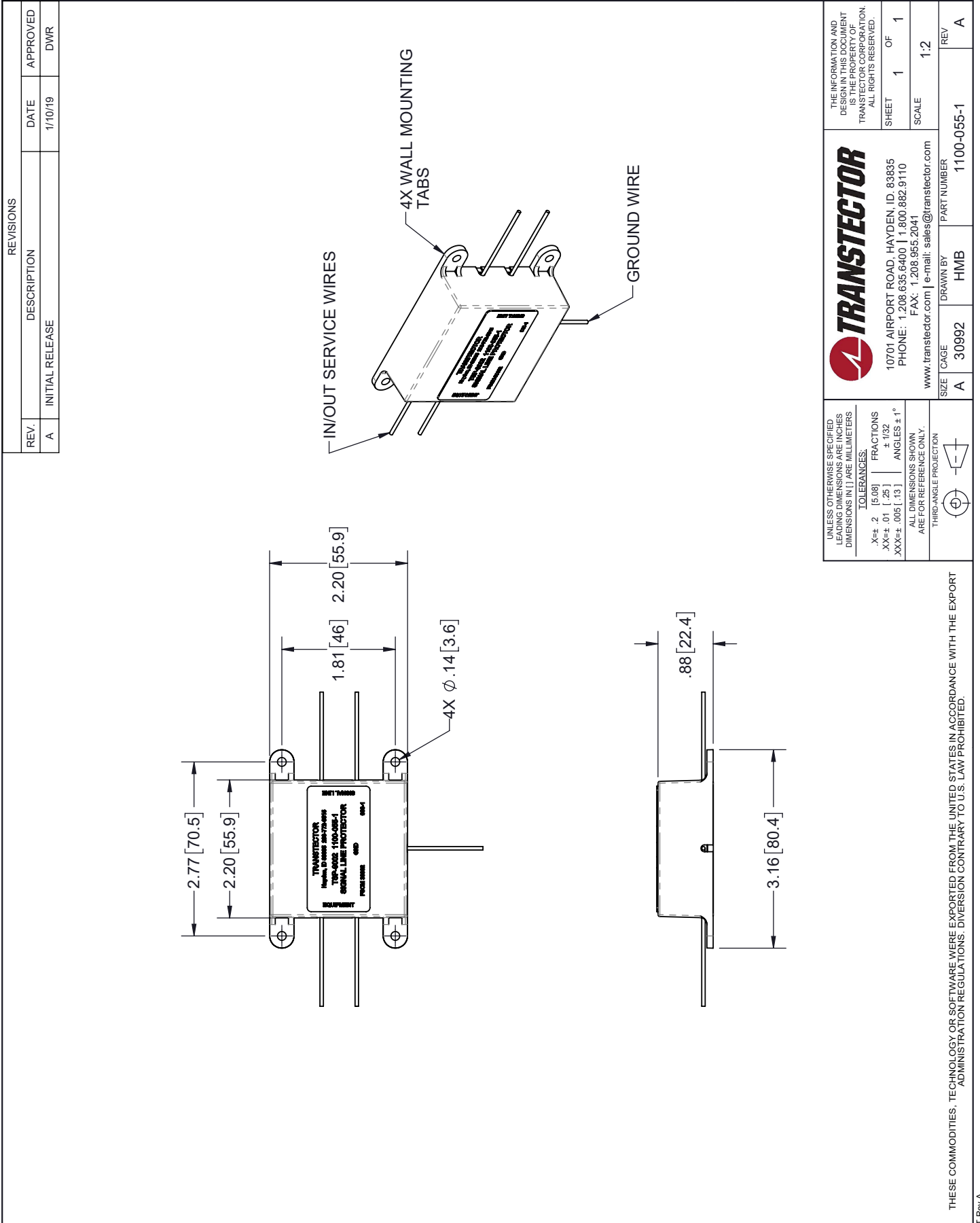
Transtector Systems specializes in protection of highly sensitive, low voltage equipment through its patented, non-degrading silicon diode technology and custom filters. Our power quality expertise translates into a diverse product offering including AC, DC, and signal applications as well as integrated cabinets, power distribution panels and EMP hardened devices.

Click the following link (or enter part number in "SEARCH" on website) to obtain additional part information including price, inventory and certifications: [Data Surge Protector SPD TSP 9002 Indoor RS-422 Wired Leads SASD 1100-055-1](https://www.transtector.com/data-surge-protector-spd-tsp-9002-indoor-1100-055-1-p.aspx)

URL: <https://www.transtector.com/data-surge-protector-spd-tsp-9002-indoor-1100-055-1-p.aspx>

The information contained in this document is accurate to the best of our knowledge and representative of the part described herein. It may be necessary to make modifications to the part and/or the documentation of the part, in order to implement improvements. Transtector reserves the right to make such changes as required. Unless otherwise stated, all specifications are nominal. Transtector does not make any representation or warranty regarding the suitability of the part described herein for any particular purpose, and Transtector does not assume any liability arising out of the use of any part or documentation.

1100-055-1 CAD Drawing



REVISIONS		
REV.	DESCRIPTION	DATE
A	INITIAL RELEASE	1/10/19
		APPROVED
		DWR

UNLESS OTHERWISE SPECIFIED LEADING DIMENSIONS ARE INCHES DIMENSIONS IN [ ] ARE MILLIMETERS

TOLERANCES:  
 .X±.2 [5.08] FRACTIONS ± 1/32  
 .XX±.01 [.25] ANGLES ± 1°  
 .XXX±.005 [.13]

ALL DIMENSIONS SHOWN ARE FOR REFERENCE ONLY.  
 THIRD-ANGLE PROJECTION

THE INFORMATION AND DESIGN IN THIS DOCUMENT IS THE PROPERTY OF TRANSTECTOR CORPORATION. ALL RIGHTS RESERVED.

**TRANSTECTOR**  
 10701 AIRPORT ROAD, HAYDEN, ID, 83835  
 PHONE: 1.208.635.6400 | 1.800.882.9110  
 FAX: 1.208.955.2041  
 www.transtector.com | e-mail: sales@transtector.com

SHEET 1 OF 1  
 SCALE 1:2

SIZE A CAGE 30992 DRAWN BY HMB PART NUMBER 1100-055-1 REV A

THESE COMMODITIES, TECHNOLOGY OR SOFTWARE WERE EXPORTED FROM THE UNITED STATES IN ACCORDANCE WITH THE EXPORT ADMINISTRATION REGULATIONS. DIVERSION CONTRARY TO U.S. LAW PROHIBITED.