

DC EDGE III Rack Mount PDU DC Indoor 1RU -24 to -48 Vdc 4x DC Feeds  
 4x 100A Feeds 4x 0.1 to 30A Outputs Per Feed UL 60950-1, NEBS



## 1101-1051 DC EDGE III 200QF 8/8

### Features

- 4x DC Feeds
- 4 Individual Power Ports, 4 Breaker Positions Each
- Alarm/Suppression Status LEDs
- Terminal Block Connectivity
- Ground Studs for Dual Lug
- 1RU Rack Mount
- Mount Type 19" or 23" Rack Mount
- Power Status LEDs: GRN=On, Off-No Power

### Applications

- Power Distribution
- Industrial Automation
- Telecommunications Base Stations
- First Responder Sites
- Emergency Management Systems
- Load Expansion

### Description

Rack mount power distribution unit (also known as PDU) 1101-1051 from Transtector is an DC 1RU PDU that accepts a -24 to -48 Vdc 4x DC Feeds electrical service and distributes power to individual loads via 4x outputs per feed 0.1 to 30 A circuit breakers. This rack mount unit equipped with state-of-the-art surge protection that provides lightning protection for downstream equipment to support long-term system reliability. Transtector rack mount PDUs are available in stock with same day shipping. Transtector rack mount PDUs are available in stock with same day shipping.

### Electrical Specifications

Description	Minimum	Typical	Maximum	Units
Service Voltage	-24		-48	Vdc
Maximum Continuous Operating Voltage (MCOV)				
Line to Return	20		74	Vdc
Current Rating			100	A
Per Feed (400 A Total)				
Branch Breaker Rating	0.1		30	A

### Mechanical Specifications

Size			
Length	12.13 in	[308.1 mm]	
Width	1.72 in	[43.69 mm]	

Click the following link (or enter part number in "SEARCH" on website) to obtain additional part information including price, inventory and certifications:  
[DC EDGE III Rack Mount PDU DC Indoor 1RU -24 to -48 Vdc 4x DC Feeds 4x 100A Feeds 4x 0.1 to 30A Outputs Per Feed UL 60950-1, NEBS 1101-1051](#)

DC EDGE III Rack Mount PDU DC Indoor 1RU -24 to -48 Vdc 4x DC Feeds  
4x 100A Feeds 4x 0.1 to 30A Outputs Per Feed UL 60950-1, NEBS

## 1101-1051 DC EDGE III 200QF 8/8

---

Height	17 in	[431.8 mm]
Weight	11.5 lbs	[5.22 kg]
Enclosure Material and Plating	Steel, White Powder Coat	

### Installation

Mount Type	19" or 23" Rack Mount
Status Indication Terminals	
2x HD-15 D-Sub	

### Environmental Specifications

Temperature Continuous	-10 to +55 deg C
Temperature Momentary	-10 to +55 deg C
Humidity	90% (non-condensing)

### Compliance Certifications

UL Compliant	UL 60950-1
Other Compliance	NEBS

Transtector Systems specializes in protection of highly sensitive, low voltage equipment through its patented, non-degrading silicon diode technology and custom filters. Our power quality expertise translates into a diverse product offering including AC, DC, and signal applications as well as integrated cabinets, power distribution panels and EMP hardened devices.

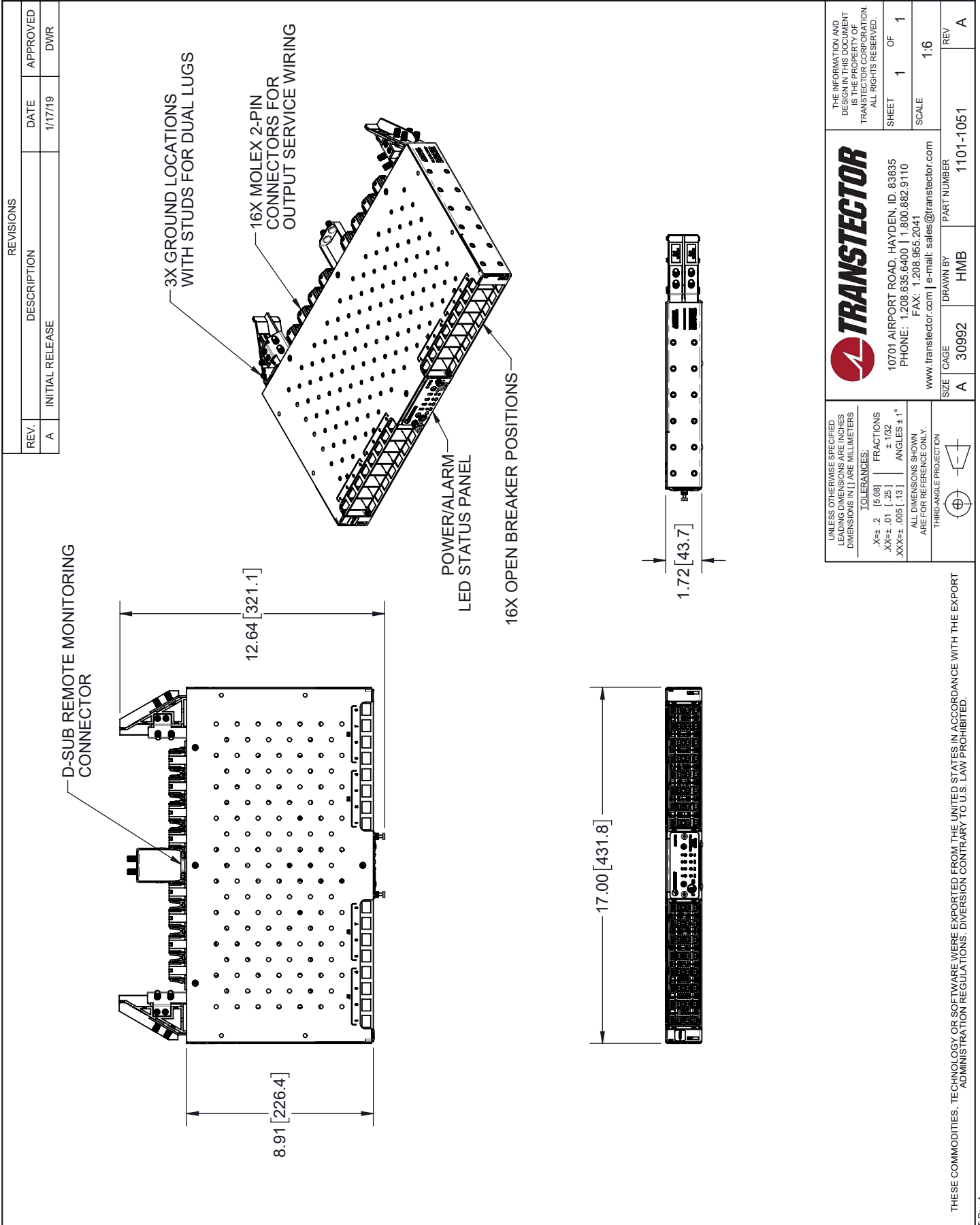
Click the following link (or enter part number in "SEARCH" on website) to obtain additional part information including price, inventory and certifications: [DC EDGE III Rack Mount PDU DC Indoor 1RU -24 to -48 Vdc 4x DC Feeds 4x 100A Feeds 4x 0.1 to 30A Outputs Per Feed UL 60950-1, NEBS 1101-1051](#)

URL: <https://www.transtector.com/dc-edge-iii-rack-mount-pdu-dc-1101-1051-p.aspx>

The information contained in this document is accurate to the best of our knowledge and representative of the part described herein. It may be necessary to make modifications to the part and/or the documentation of the part, in order to implement improvements. Transtector reserves the right to make such changes as required. Unless otherwise stated, all specifications are nominal. Transtector does not make any representation or warranty regarding the suitability of the part described herein for any particular purpose, and Transtector does not assume any liability arising out of the use of any part or documentation.

DC EDGE III Rack Mount PDU DC Indoor 1RU -24 to -48 Vdc 4x DC Feeds 4x 100A Feeds 4x 0.1 to 30A Outputs Per Feed UL 60950-1, NEBS

1101-1051 CAD Drawing



REVISIONS			
REV.	DESCRIPTION	DATE	APPROVED
A	INITIAL RELEASE	1/17/19	DWR

<p>UNLESS OTHERWISE SPECIFIED LEADING DIMENSIONS ARE INCHES DIMENSIONS IN [ ] ARE MILLIMETERS</p> <p>TOLERANCES:</p> <p>.X±.2 [5.08] FRACTIONS                  XX±.01 [.25] ±.102                  XXX±.005 [.13] ANGLES ±1°</p> <p>ALL DIMENSIONS SHOWN ARE FOR REFERENCE ONLY.</p> <p>THIRD-ANGLE PROJECTION</p>		<p>THE INFORMATION AND DESIGN IN THIS DOCUMENT IS THE PROPERTY OF TRANSTECTOR CORPORATION. ALL RIGHTS RESERVED.</p> <p>SHEET 1 OF 1</p> <p>SCALE 1:6</p>	
<p>TRANSTECTOR</p> <p>10701 AIRPORT ROAD, HAYDEN, ID, 83835</p> <p>PHONE: 1.208.635.6400   1.800.882.9110</p> <p>FAX: 1.208.955.2041</p> <p>www.transtector.com   e-mail: sales@transtector.com</p>		<p>SIZE CAGE DRAWN BY PART NUMBER REV</p> <p>A 30992 HMB 1101-1051 A</p>	

THESE COMMODITIES, TECHNOLOGY OR SOFTWARE WERE EXPORTED FROM THE UNITED STATES IN ACCORDANCE WITH THE EXPORT ADMINISTRATION REGULATIONS. DIVERSION CONTRARY TO U.S. LAW PROHIBITED.

T-Rev A