

DC Surge Protector SPD 3DC48-32 Indoor Brick 48 Vdc,  
 3x Ckt Full-Mode, 30 kA MOV UL 497B



## 1101-1130 3DC48-32

### Features

- UL 497B
- High Continuous Power Rating
- High Capacity MOV Surge Protection
- Power/Suppression Status LEDs
- Terminal Block Connectivity
- Wall Mount

### Applications

- Industrial Automation
- Controls & Sense Loops
- Telecommunications Base Stations
- IT & Data Centers
- Wastewater Treatment
- Rail
- Oil & Gas
- LED Lighting

### Description

DC surge protector (also known as SPD or lightning protector) 1101-1130 from Transtector is a UL 497B brick style SPD that utilizes state of the art MOV technology to protect critical equipment that operates on a 48 Vdc electrical service. This surge protector provides effective protection against electrical transient surges that are generated both by external lightning events and by internal switching events and supports long-term system reliability by safely shunting high amounts of transient energy while maintaining a very low clamping voltage. Transtector DC surge protectors are available in stock with same day shipping.

### Electrical Specifications

Description	Minimum	Typical	Maximum	Units
Service Voltages		48		Vdc
Current Rating			30	A
Maximum Continuous Operating Voltage (MCOV)				
MCOV DC			60	Vdc

### Surge Protection Specification

Description	Minimum	Typical	Maximum	Units
Surge Protection Technology		MOV		
Surge Protection Modes		DC+ to DC-, DC+ to GND, DC- to GND		
Response Time			25	ns
8/20 $\mu$ s Surge Current			30	kA

Click the following link (or enter part number in "SEARCH" on website) to obtain additional part information including price, inventory and certifications:  
[DC Surge Protector SPD 3DC48-32 Indoor Brick 48 Vdc, 3x Ckt Full-Mode, 30 kA MOV UL 497B 1101-1130](#)

DC Surge Protector SPD 3DC48-32 Indoor Brick 48 Vdc,  
3x Ckt Full-Mode, 30 kA MOV UL 497B



**1101-1130**  
**3DC48-32**

### Mechanical Specifications

#### Size

Height	3.57 in	[90.68 mm]
Width	6 in	[152.4 mm]
Depth	2.54 in	[64.52 mm]
Weight	0.75 lbs	[340.19 g]
Housing Material and Plating	ABS	

### Environmental Specifications

#### Temperature

Operating Range	-40 to +65 deg C
Storage Range	-40 to +65 deg C

### Installation

Mount Type	Panel
Service Wiring Terminal	
Screw Terminal	#20 to #8 AWG

### Compliance Certifications

UL Compliant	Yes
Certifications	UL 497B

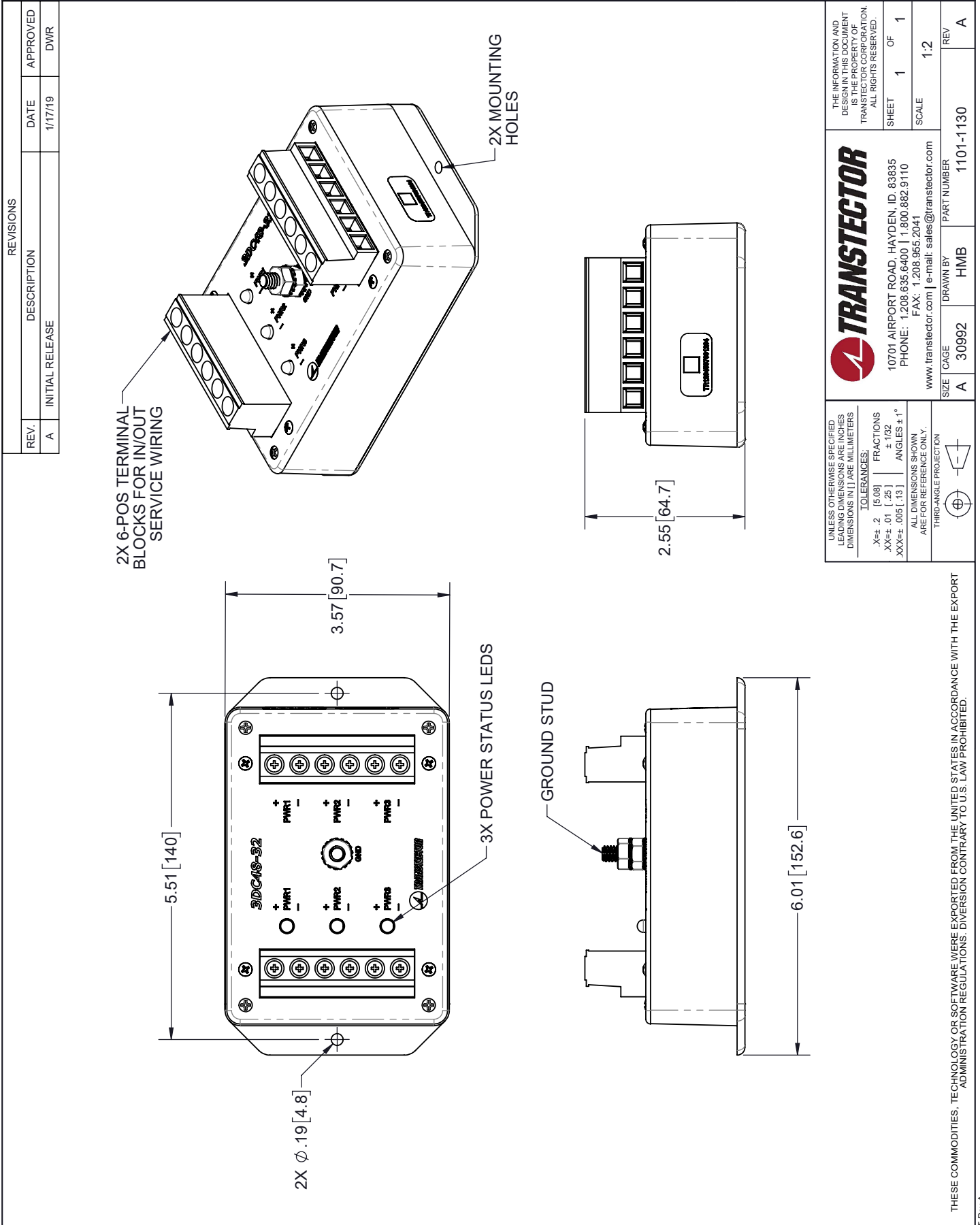
Transtector Systems specializes in protection of highly sensitive, low voltage equipment through its patented, non-degrading silicon diode technology and custom filters. Our power quality expertise translates into a diverse product offering including AC, DC, and signal applications as well as integrated cabinets, power distribution panels and EMP hardened devices.

Click the following link (or enter part number in "SEARCH" on website) to obtain additional part information including price, inventory and certifications: [DC Surge Protector SPD 3DC48-32 Indoor Brick 48 Vdc, 3x Ckt Full-Mode, 30 kA MOV UL 497B 1101-1130](#)

URL: <https://www.transtector.com/dc-surge-protector-spd-3dc48-32-indoor-1101-1130-p.aspx>

The information contained in this document is accurate to the best of our knowledge and representative of the part described herein. It may be necessary to make modifications to the part and/or the documentation of the part, in order to implement improvements. Transtector reserves the right to make such changes as required. Unless otherwise stated, all specifications are nominal. Transtector does not make any representation or warranty regarding the suitability of the part described herein for any particular purpose, and Transtector does not assume any liability arising out of the use of any part or documentation.

1101-1130 CAD Drawing



REVISIONS			
REV.	DESCRIPTION	DATE	APPROVED
A	INITIAL RELEASE	1/17/19	DWR

<p>UNLESS OTHERWISE SPECIFIED LEADING DIMENSIONS ARE INCHES DIMENSIONS IN [ ] ARE MILLIMETERS</p> <p>TOLERANCES:                  .X=±.2 [5.08] FRACTIONS ±.102                  .XX=±.01 [.25] ANGLES ±1°                  .XXX=±.005 [.13]</p> <p>ALL DIMENSIONS SHOWN ARE FOR REFERENCE ONLY.                  THIRD-ANGLE PROJECTION</p>		<p>THE INFORMATION AND DESIGN IN THIS DOCUMENT IS THE PROPERTY OF TRANSTECTOR CORPORATION. ALL RIGHTS RESERVED.</p> <p>SHEET 1 OF 1                  SCALE 1:2</p>	
<p>TRANSTECTOR</p> <p>10701 AIRPORT ROAD, HAYDEN, ID, 83835                  PHONE: 1.208.635.6400   1.800.882.9110                  FAX: 1.208.955.2041                  www.transsector.com   e-mail: sales@transsector.com</p>		<p>SIZE CAGE DRAWN BY PART NUMBER REV                  A 30992 HMB 1101-1130 A</p>	

THESE COMMODITIES, TECHNOLOGY OR SOFTWARE WERE EXPORTED FROM THE UNITED STATES IN ACCORDANCE WITH THE EXPORT ADMINISTRATION REGULATIONS. DIVERSION CONTRARY TO U.S. LAW PROHIBITED.

T-Rev A