

Data Surge Protector SPD FSP Indoor RS-232, RS-422, Sense Loops Screw Terminal SASD 52 V



1101-372-3 FSP 4003 MC

Features

- Models for Wide Range of Balanced Pair Voltages
- Terminal Block Connectivity
- Dedicated Ground Stud
- Wall Mount

Applications

- RS-422 Networks
- Telecommunications Base Stations
- WISP/ISP
- IT & Data Centers
- Point-to-Point Links
- Control Lines and Sense Loops
- Oil & Gas

Description

Data surge protector (also known as SPD or lightning protector) 1101-372-3 from Transtector is an indoor style SPD that utilizes state of the art SASD technology to protect critical equipment in RS-422 protocol data networks while remaining transparent to data throughput. This surge protector provides effective protection against electrical transient surges that are generated both by external lightning events and by internal switching events and supports long-term system reliability by absorbing high amounts of transient energy while maintaining a very low clamping voltage. Transtector Data Signal surge protectors are available in stock with same day shipping.

Electrical Specifications

Description	Minimum	Typical	Maximum	Units
Connectors		Screw Terminal		
Data Protocols		RS-232, RS-422, Sense Loops		
Data Rate			1.5	Mb/s
Vdc Rating (Data)		52	54	Vdc
Voltage Rating (DC)			52	Vdc
Continuous Current Rating			4	A

Surge Protection Specification

Description	Minimum	Typical	Maximum	Units
Surge Protection Technology		SASD		
Protection Modes		L-G		
10/1000 μ s Surge Current				
L-G			67	A

Click the following link (or enter part number in "SEARCH" on website) to obtain additional part information including price, inventory and certifications:
[Data Surge Protector SPD FSP Indoor RS-232, RS-422, Sense Loops Screw Terminal SASD 52 V 1101-372-3](#)

Data Surge Protector SPD FSP Indoor RS-232, RS-422, Sense Loops Screw Terminal SASD 52 V



1101-372-3
FSP 4003 MC

Response Time	5	ns
---------------	---	----

Mechanical Specifications

Size

Height	2.2 in	[55.88 mm]
Width	3.16 in	[80.26 mm]
Depth	1.44 in	[36.58 mm]
Weight	0.2 lbs	[90.72 g]

Environmental Specifications

Operating Temperature	-40 to +85 deg C
Storage Temperature	-40 to +85 deg C
Mount Type	Wall
Grounding	6-32 Stud

Compliance Certifications

RoHS Compliant	Yes
----------------	-----

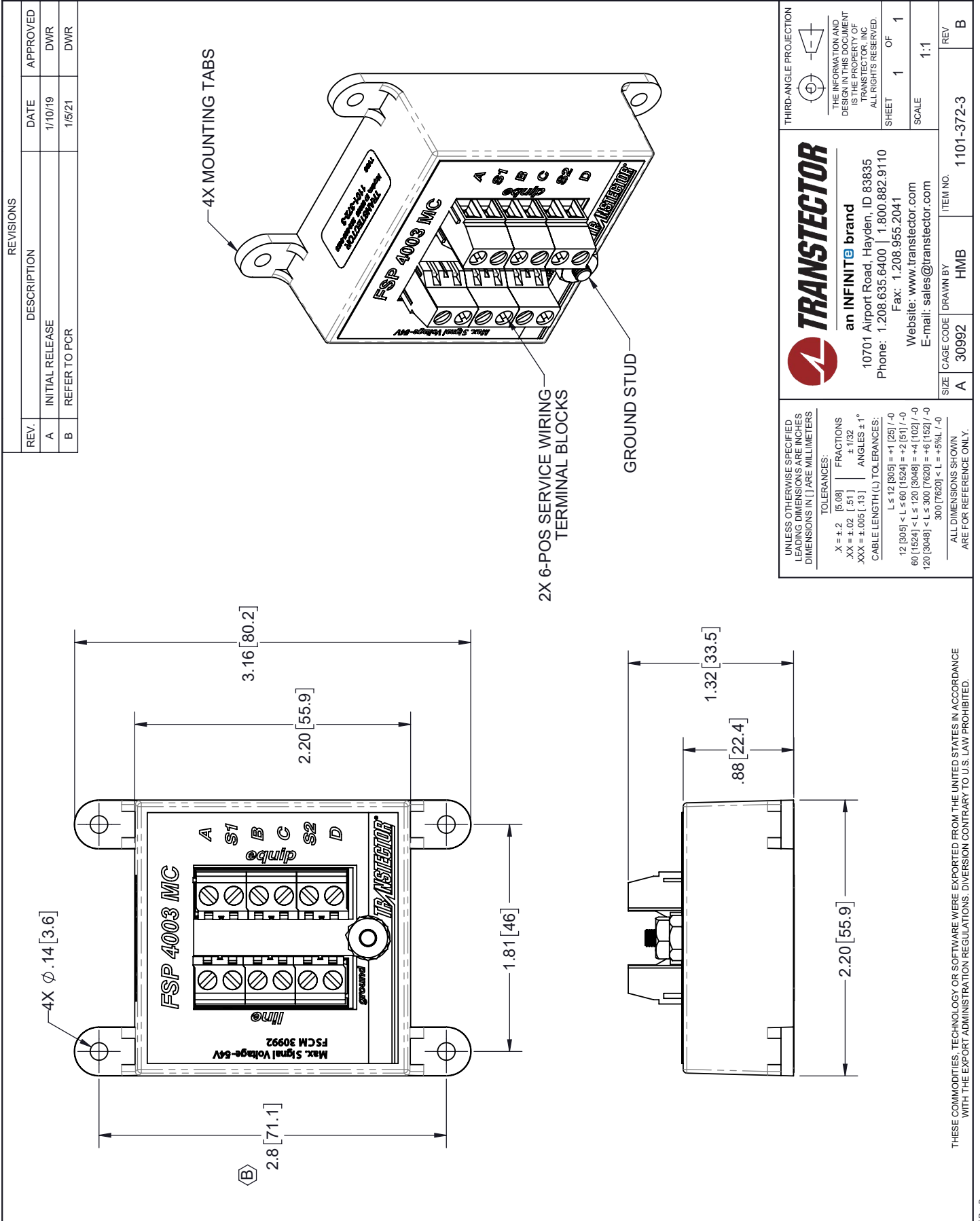
Transtector Systems specializes in protection of highly sensitive, low voltage equipment through its patented, non-degrading silicon diode technology and custom filters. Our power quality expertise translates into a diverse product offering including AC, DC, and signal applications as well as integrated cabinets, power distribution panels and EMP hardened devices.

Click the following link (or enter part number in "SEARCH" on website) to obtain additional part information including price, inventory and certifications: [Data Surge Protector SPD FSP Indoor RS-232, RS-422, Sense Loops Screw Terminal SASD 52 V 1101-372-3](https://www.transtector.com/data-surge-protector-spd-fsp-indoor-rs-1101-372-3-p.aspx)

URL: <https://www.transtector.com/data-surge-protector-spd-fsp-indoor-rs-1101-372-3-p.aspx>

The information contained in this document is accurate to the best of our knowledge and representative of the part described herein. It may be necessary to make modifications to the part and/or the documentation of the part, in order to implement improvements. Transtector reserves the right to make such changes as required. Unless otherwise stated, all specifications are nominal. Transtector does not make any representation or warranty regarding the suitability of the part described herein for any particular purpose, and Transtector does not assume any liability arising out of the use of any part or documentation.

1101-372-3 CAD Drawing



REVISIONS			
REV.	DESCRIPTION	DATE	APPROVED
A	INITIAL RELEASE	1/10/19	DWR
B	REFER TO PCR	1/5/21	DWR

TRANSLECTOR
an INFINIT brand

10701 Airport Road, Hayden, ID 83835
Phone: 1.208.635.6400 | 1.800.882.9110
Fax: 1.208.955.2041
Website: www.translector.com
E-mail: sales@translector.com

THIRD-ANGLE PROJECTION

THE INFORMATION AND DESIGN IN THIS DOCUMENT IS THE PROPERTY OF TRANSLECTOR, INC. ALL RIGHTS RESERVED.

SHEET 1 OF 1
SCALE 1:1

SIZE	CAGE CODE	DRAWN BY	ITEM NO.	REV
A	30992	HMB	1101-372-3	B

UNLESS OTHERWISE SPECIFIED LEADING DIMENSIONS ARE INCHES DIMENSIONS IN [] ARE MILLIMETERS

TOLERANCES:

X # ± .2 [.05] FRACTIONS
XX # ± .02 [.51] ± 1/32
XXX # ± .005 [.13] ANGLES ± 1°

CABLE LENGTH (L) TOLERANCES:

L ≤ 12 [305] = +1 [25] / -0
12 [305] < L ≤ 60 [1524] = +2 [51] / -0
60 [1524] < L ≤ 120 [3048] = +4 [102] / -0
120 [3048] < L ≤ 300 [7620] = +6 [152] / -0
300 [7620] < L = +5% / -0

ALL DIMENSIONS SHOWN ARE FOR REFERENCE ONLY.

THESE COMMODITIES, TECHNOLOGY OR SOFTWARE WERE EXPORTED FROM THE UNITED STATES IN ACCORDANCE WITH THE EXPORT ADMINISTRATION REGULATIONS. DIVERSION CONTRARY TO U.S. LAW PROHIBITED.