

Electrical Cabinet ISP Indoor Split-phase 120/240 Vac 200A
 Main ASCO ATS UL 891 Service Entrance SASD, MOV



1101-602-625645
 ISP Cabinet 200A ATS

Features

- UL891
- Service Entrance Rated
- Main Breaker
- 42 Position Load Center
- Model Available with Automatic Transfer Switch
- Integrated SASD/MOV Hybrid Surge Protection
- Wall Mount

Applications

- DAS Systems
- Electrical Main Panels
- Electrical Sub-Panels
- Load Expansion

Description

Electrical cabinet (also known as power distribution box) 1101-602-625645 from Transtector is a UL891 Service Entrance power distribution box that accepts a 120/240 Vac Split-phase electrical service and distributes power to individual loads via 42 Pos 20 A 2-Pole circuit breakers. This electrical cabinet is equipped with a state-of-the-art SASD/MOV surge protector that provides lightning protection for downstream equipment to support long-term system reliability. Transtector electrical cabinets are available in stock with same day shipping.

Electrical Specifications

Description	Minimum	Typical	Maximum	Units
Service Voltage		120/240		Vac
Maximum Continuous Operating Voltage (MCOV)				
L - L			300	Vac
L - N			150	Vac
SCCR (Short Circuit Current Rating)			10	kAIC
Service Current Rating			200	A
Main Breaker Rating		200 ASCO ATS		A

Surge Protection Specification

Description	Minimum	Typical	Maximum	Units
Surge Protection Technology		SASD, MOV		
Protection Modes		L-L, L-N		
8/20 μ s Surge Current			130	kA
Nominal Discharge Current Rating (In)		10		kA

Click the following link (or enter part number in "SEARCH" on website) to obtain additional part information including price, inventory and certifications:
[Electrical Cabinet ISP Indoor Split-phase 120/240 Vac 200A Main ASCO ATS UL 891 Service Entrance SASD, MOV 1101-602-625645](#)

Electrical Cabinet ISP Indoor Split-phase 120/240 Vac 200A
 Main ASCO ATS UL 891 Service Entrance SASD, MOV

1101-602-625645
 ISP Cabinet 200A ATS



Vpl 8/20 μ s L-G		2,080 @ 10kA	Vpk
SCCR (Short Circuit Current Rating)	10		kAIC

Mechanical Specifications

Size

Outer Height	56in	[142.24 cm]
Outer Width	20 in	[508 mm]
Outer Depth	7 in	[177.8mm]
Weight	215 lbs	[97.52 kg]
Enclosure Material and Plating	16 Gauge Aluminum	

Installation

Mount Type	Wall or H-Frame Mount
Service Wiring Terminals	Compression Lug
Status Indication Terminals	
3-Position Screw Terminal	#22 AWG to #16 AWG

Environmental Specifications

Temperature Continuous	-40 to +75 deg C
Temperature Momentary	-40 to +75 deg C
NEMA Rating	1
Humidity	95% non-condensing

Compliance Certifications

UL Listed	UL 891, UL 67, UL 1449
-----------	------------------------

Click the following link (or enter part number in "SEARCH" on website) to obtain additional part information including price, inventory and certifications:
[Electrical Cabinet ISP Indoor Split-phase 120/240 Vac 200A Main ASCO ATS UL 891 Service Entrance SASD, MOV 1101-602-625645](https://www.transtector.com/1101-602-625645)

Electrical Cabinet ISP Indoor Split-phase 120/240 Vac 200A
Main ASCO ATS UL 891 Service Entrance SASD, MOV

1101-602-625645
ISP Cabinet 200A ATS



Transtector Systems specializes in protection of highly sensitive, low voltage equipment through its patented, non-degrading silicon diode technology and custom filters. Our power quality expertise translates into a diverse product offering including AC, DC, and signal applications as well as integrated cabinets, power distribution panels and EMP hardened devices.

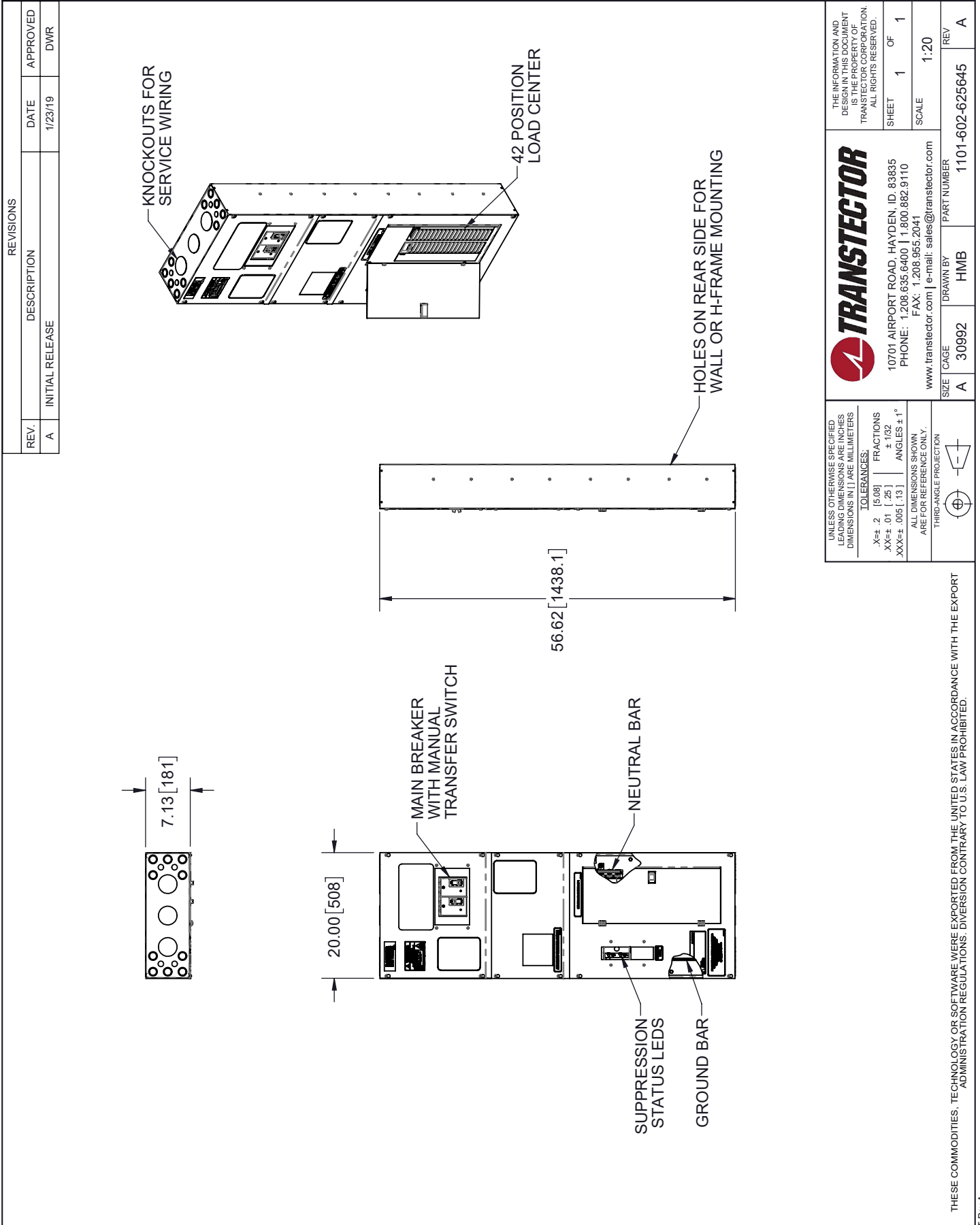
Click the following link (or enter part number in "SEARCH" on website) to obtain additional part information including price, inventory and certifications: [Electrical Cabinet ISP Indoor Split-phase 120/240 Vac 200A Main ASCO ATS UL 891 Service Entrance SASD, MOV 1101-602-625645](https://www.transtector.com/electrical-cabinet-isp-indoor-split-phase-120-1101-602-625645-p.aspx)

URL: <https://www.transtector.com/electrical-cabinet-isp-indoor-split-phase-120-1101-602-625645-p.aspx>

The information contained in this document is accurate to the best of our knowledge and representative of the part described herein. It may be necessary to make modifications to the part and/or the documentation of the part, in order to implement improvements. Transtector reserves the right to make such changes as required. Unless otherwise stated, all specifications are nominal. Transtector does not make any representation or warranty regarding the suitability of the part described herein for any particular purpose, and Transtector does not assume any liability arising out of the use of any part or documentation.

Electrical Cabinet ISP Indoor Split-phase 120/240 Vac 200A Main
 ASCO ATS UL 891 Service Entrance SASD, MOV

1101-602-625645 CAD Drawing



REVISIONS			
REV.	DESCRIPTION	DATE	APPROVED
A	INITIAL RELEASE	1/23/19	DWR

UNLESS OTHERWISE SPECIFIED LEADING DIMENSIONS ARE INCHES DIMENSIONS IN [] ARE MILLIMETERS

TOLERANCES:
 .X±.2 [5.08] FRACTIONS ±.132
 .XX±.01 [.25] ANGLES ±1°
 XXX±.005 [.13]

ALL DIMENSIONS SHOWN ARE FOR REFERENCE ONLY.
 THIRD-ANGLE PROJECTION

THE INFORMATION AND DESIGN IN THIS DOCUMENT IS THE PROPERTY OF TRANSTECTOR CORPORATION. ALL RIGHTS RESERVED.

TRANSTECTOR
 10701 AIRPORT ROAD, HAYDEN, ID, 83835
 PHONE: 1.208.635.6400 | 1.800.882.9110
 FAX: 1.208.955.2041
 www.transsector.com | e-mail: sales@transsector.com

SHEET 1 OF 1
 SCALE 1:20

SIZE CAGE DRAWN BY PART NUMBER REV
 A 30992 HMB 1101-602-625645 A

THESE COMMODITIES, TECHNOLOGY OR SOFTWARE WERE EXPORTED FROM THE UNITED STATES IN ACCORDANCE WITH THE EXPORT ADMINISTRATION REGULATIONS. DIVERSION CONTRARY TO U.S. LAW PROHIBITED.

T-Rev A