

Data Surge Protector SPD TR Indoor 2-Pair HVAC Communications Links Wired Leads SASD, Trane Tracer Series

1101-688
 TR 2258



Features

- 100% SASD Protection
- Specially Designed for HVAC Applications
- Wired Lead Connectivity
- Wall Mount

Applications

- 2-Pair HVAC Communications Links Networks
- Telecommunications Base Stations
- WISP/ISP
- IT & Data Centers
- Point-to-Point Links
- Control Lines and Sense Loops
- Oil & Gas

Description

Data surge protector (also known as SPD or lightning protector) 1101-688 from Transtector is an indoor style SPD that utilizes state of the art SASD technology to protect critical equipment in 2-Pair HVAC Communications Links protocol data networks while remaining transparent to data throughput. This surge protector provides effective protection against electrical transient surges that are generated both by external lightning events and by internal switching events and supports long-term system reliability by absorbing high amounts of transient energy while maintaining a very low clamping voltage. Transtector Data Signal surge protectors are available in stock with same day shipping.

Electrical Specifications

Description	Minimum	Typical	Maximum	Units
Connectors		Wired Leads		
Data Protocols		2-Pair HVAC Communications Links		
Data Rate			1.5	Mb/s
Vdc Rating (Data)		12	17	Vdc

Surge Protection Specification

Description	Minimum	Typical	Maximum	Units
Surge Protection Technology		SASD		
Protection Modes		L-G		
10/1000 μ s Surge Current				
L-G			375	A
Response Time			5	ns

Click the following link (or enter part number in "SEARCH" on website) to obtain additional part information including price, inventory and certifications:
[Data Surge Protector SPD TR Indoor 2-Pair HVAC Communications Links Wired Leads SASD, Trane Tracer Series 1101-688](#)

Data Surge Protector SPD TR Indoor 2-Pair HVAC Communications
Links Wired Leads SASD, Trane Tracer Series

1101-688
TR 2258



Mechanical Specifications

Size

Height	2.2 in	[55.88 mm]
Width	3.16 in	[80.26 mm]
Depth	1.44 in	[36.58 mm]
Weight	0.15 lbs	[68.04 g]

Environmental Specifications

Operating Temperature	-30 to +65 deg C
Storage Temperature	-30 to +65 deg C

Environmental Protection Rating	IP20
---------------------------------	------

Installation

Mount Type	Wall
Grounding	6-32 Stud, Nut

Transtector Systems specializes in protection of highly sensitive, low voltage equipment through its patented, non-degrading silicon diode technology and custom filters. Our power quality expertise translates into a diverse product offering including AC, DC, and signal applications as well as integrated cabinets, power distribution panels and EMP hardened devices.

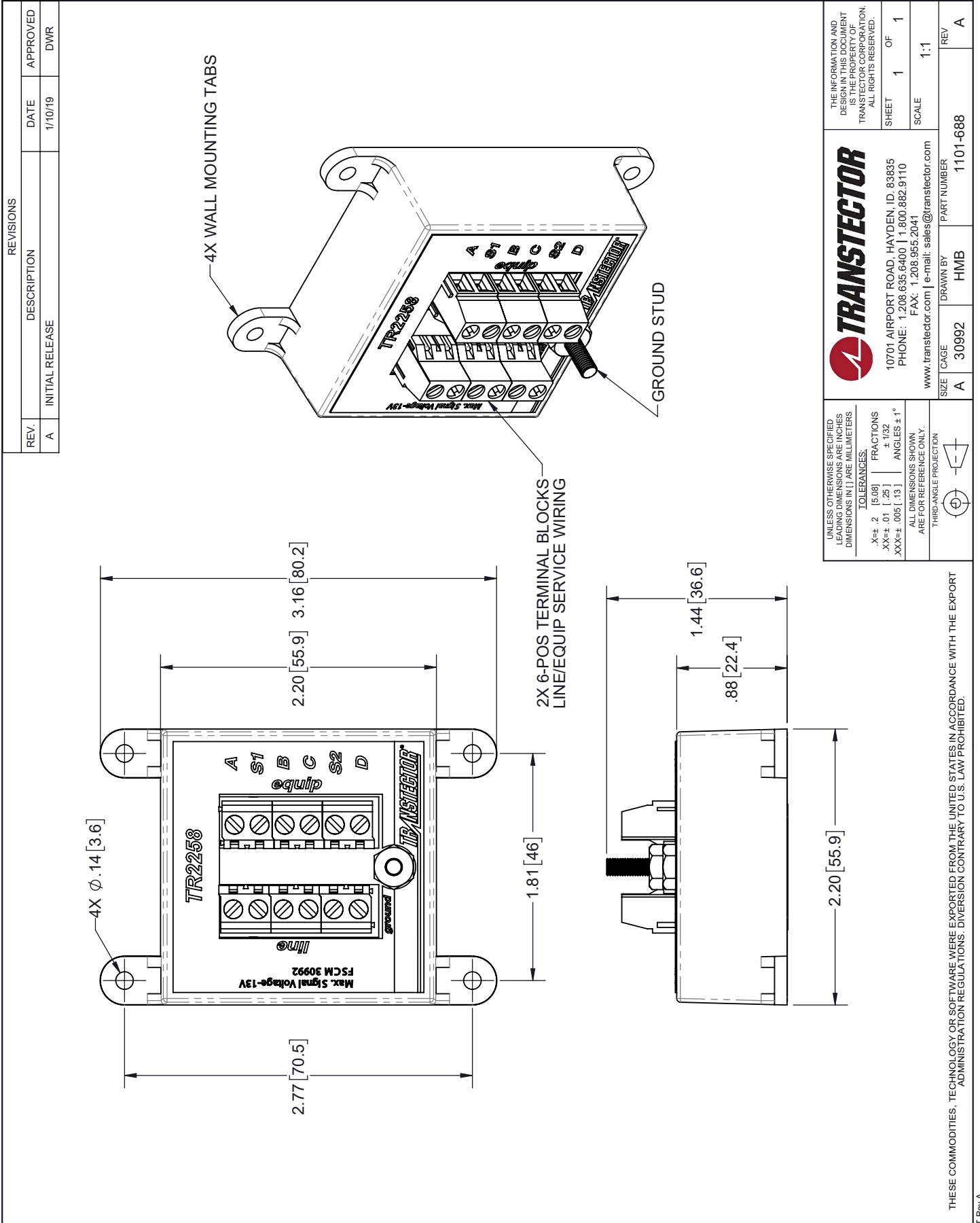
Click the following link (or enter part number in "SEARCH" on website) to obtain additional part information including price, inventory and certifications: [Data Surge Protector SPD TR Indoor 2-Pair HVAC Communications Links Wired Leads SASD, Trane Tracer Series 1101-688](https://www.transtector.com/data-surge-protector-spd-tr-indoor-2-1101-688-p.aspx)

URL: <https://www.transtector.com/data-surge-protector-spd-tr-indoor-2-1101-688-p.aspx>

The information contained in this document is accurate to the best of our knowledge and representative of the part described herein. It may be necessary to make modifications to the part and/or the documentation of the part, in order to implement improvements. Transtector reserves the right to make such changes as required. Unless otherwise stated, all specifications are nominal. Transtector does not make any representation or warranty regarding the suitability of the part described herein for any particular purpose, and Transtector does not assume any liability arising out of the use of any part or documentation.

Data Surge Protector SPD TR Indoor 2-Pair HVAC Communications
Links Wired Leads SASD, Trane Tracer Series

1101-688 CAD Drawing



REVISIONS			
REV.	DESCRIPTION	DATE	APPROVED
A	INITIAL RELEASE	1/10/19	DWR

UNLESS OTHERWISE SPECIFIED LEADING DIMENSIONS ARE INCHES DIMENSIONS IN [] ARE MILLIMETERS

TOLERANCES:
 .X±.2 [5.08]
 .XX±.01 [.25]
 .XXX±.005 [.13]

FRACTIONS ± 1/32
 ANGLES ± 1°

ALL DIMENSIONS SHOWN ARE FOR REFERENCE ONLY.
 THIRD-ANGLE PROJECTION

THE INFORMATION AND DESIGN IN THIS DOCUMENT IS THE PROPERTY OF TRANSTECTOR CORPORATION. ALL RIGHTS RESERVED.

SHEET 1 OF 1
 SCALE 1:1

TRANSTECTOR
 10701 AIRPORT ROAD, HAYDEN, ID. 83835
 PHONE: 1.208.635.6400 | 1.800.882.9110
 FAX: 1.208.955.2041
 www.transtector.com | e-mail: sales@transtector.com

SIZE: A
 CAGE: 30992
 DRAWN BY: HMB
 PART NUMBER: 1101-688
 REV: A

THESE COMMODITIES, TECHNOLOGY OR SOFTWARE WERE EXPORTED FROM THE UNITED STATES IN ACCORDANCE WITH THE EXPORT ADMINISTRATION REGULATIONS. DIVERSION CONTRARY TO U.S. LAW PROHIBITED.