

## Data Surge Protector SPD TSJ Indoor POTS RJ11 Screw Terminal SASD, GDT

### 1101-740 TSJ 6A CLT GT



#### Features

- POTS
- RJ-11 Connectivity
- Dedicated Ground Lug
- Wall Mount

#### Applications

- POTS Networks
- Telecommunications Base Stations
- WISP/ISP
- IT & Data Centers
- Point-to-Point Links
- Control Lines and Sense Loops
- Oil & Gas

#### Description

Data surge protector (also known as SPD or lightning protector) 1101-740 from Transtector is an indoor style SPD that utilizes state of the art SASD/GDT technology to protect critical equipment in POTS protocol data networks while remaining transparent to data throughput. This surge protector provides effective protection against electrical transient surges that are generated both by external lightning events and by internal switching events and supports long-term system reliability by absorbing high amounts of transient energy while maintaining a very low clamping voltage. Transtector Data Signal surge protectors are available in stock with same day shipping.

#### Electrical Specifications

Description	Minimum	Typical	Maximum	Units
Connectors		RJ11 to Screw Terminal		
Compatible Cables		Cat3		
Data Protocols		POTS		
Vdc Rating (Data)			160	Vdc

#### Surge Protection Specification

Description	Minimum	Typical	Maximum	Units
Surge Protection Technology		SASD, GDT		
Protected Pins		[2,3], [4,5]		
Protection Modes		L-G, L-L		
10/1000µs Surge Current				
L-G			100	A

8/20µs Surge Current

Click the following link (or enter part number in "SEARCH" on website) to obtain additional part information including price, inventory and certifications:  
[Data Surge Protector SPD TSJ Indoor POTS RJ11 Screw Terminal SASD, GDT 1101-740](#)

## Data Surge Protector SPD TSJ Indoor POTS RJ11 Screw Terminal SASD, GDT

**1101-740**  
 TSJ 6A CLT GT


L-G		3	kA
Vpl 10/1000µs			
L-G	300 @ 100A		Vpk
Vpl 8/20µs			
L-G	500 @ 3kA		Vpk
Response Time		5	ns

**Mechanical Specifications**  
 Size

Height	2.2 in	[55.88 mm]
Width	3.16 in	[80.26 mm]
Depth	1.72 in	[43.69 mm]
Weight	0.15 lbs	[68.04 g]

**Environmental Specifications**

Operating Temperature	-30 to +75 deg C
Storage Temperature	-30 to +75 deg C

Mount Type	Wall
Installation Hardware	Telephone Cord
Grounding	1/4-20 Stud

**Compliance Certifications**

RoHS Compliant	Yes
----------------	-----

Click the following link (or enter part number in "SEARCH" on website) to obtain additional part information including price, inventory and certifications:  
[Data Surge Protector SPD TSJ Indoor POTS RJ11 Screw Terminal SASD, GDT 1101-740](#)

Data Surge Protector SPD TSJ Indoor POTS RJ11 Screw Terminal SASD, GDT

**1101-740**  
TSJ 6A CLT GT



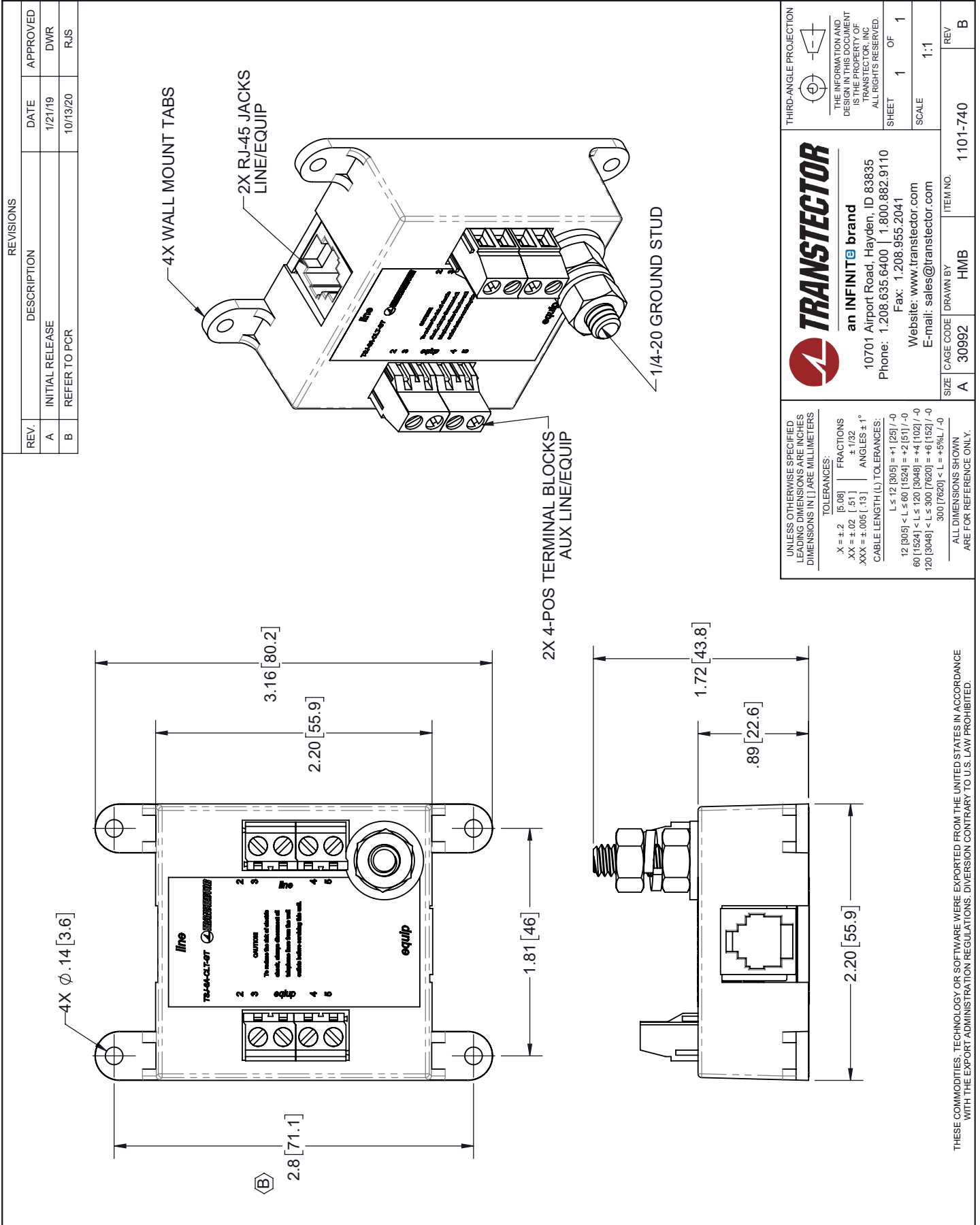
Transtector Systems specializes in protection of highly sensitive, low voltage equipment through its patented, non-degrading silicon diode technology and custom filters. Our power quality expertise translates into a diverse product offering including AC, DC, and signal applications as well as integrated cabinets, power distribution panels and EMP hardened devices.

Click the following link (or enter part number in “SEARCH” on website) to obtain additional part information including price, inventory and certifications: [Data Surge Protector SPD TSJ Indoor POTS RJ11 Screw Terminal SASD, GDT 1101-740](#)

URL: <https://www.transtector.com/data-surge-protector-spd-tsj-indoor-pots-1101-740-p.aspx>

The information contained in this document is accurate to the best of our knowledge and representative of the part described herein. It may be necessary to make modifications to the part and/or the documentation of the part, in order to implement improvements. Transtector reserves the right to make such changes as required. Unless otherwise stated, all specifications are nominal. Transtector does not make any representation or warranty regarding the suitability of the part described herein for any particular purpose, and Transtector does not assume any liability arising out of the use of any part or documentation.

1101-740 CAD Drawing



REVISIONS			
REV.	DESCRIPTION	DATE	APPROVED
A	INITIAL RELEASE	1/21/19	DWR
B	REFER TO PCR	10/13/20	RJS

**TRANSTECTOR**  
an INFINIT<sup>®</sup> brand

10701 Airport Road, Hayden, ID 83835  
Phone: 1.208.635.6400 | 1.800.882.9110  
Fax: 1.208.955.2041  
Website: www.transvector.com  
E-mail: sales@transvector.com

THIRD-ANGLE PROJECTION

THE INFORMATION AND DESIGN IN THIS DOCUMENT IS THE PROPERTY OF TRANSTECTOR, INC. ALL RIGHTS RESERVED.

SHEET 1 OF 1  
SCALE 1:1

UNLESS OTHERWISE SPECIFIED LEADING DIMENSIONS ARE IN INCHES DIMENSIONS IN [ ] ARE MILLIMETERS

TOLERANCES:  
X = ±.2 [5.08] | FRACTIONS  
XX = ±.02 [ .51 ] | ± 1/32  
XXX = ±.005 [ .13 ] | ANGLES ± 1°

CABLE LENGTH (L) TOLERANCES:  
L ≤ 12 [305] = +1 [25] / -0  
12 [305] < L ≤ 60 [1524] = +2 [51] / -0  
60 [1524] < L ≤ 120 [3048] = +4 [102] / -0  
120 [3048] < L ≤ 300 [7620] = +6 [152] / -0  
300 [7620] < L = +5% / -0

ALL DIMENSIONS SHOWN ARE FOR REFERENCE ONLY.

SIZE A | CAGE CODE 30992 | DRAWN BY HMB | ITEM NO. 1101-740 | REV B

THESE COMMODITIES, TECHNOLOGY OR SOFTWARE WERE EXPORTED FROM THE UNITED STATES IN ACCORDANCE WITH THE EXPORT ADMINISTRATION REGULATIONS. DIVERSION CONTRARY TO U.S. LAW PROHIBITED.

T-Rev-D