

Data Surge Protector SPD ALPU Outdoor 10/100 Base-T Ethernet/90V PoE 110 Punch Down Block SASD

1101-859
 ALPU 90 V



Features

- Models for all Common Ethernet/PoE Protocols
- Punch Down Block Wiring
- Pole or Wall Mount

Applications

- 10/100 Base-T Ethernet/90V PoE Networks
- Telecommunications Base Stations
- WISP/ISP
- IT & Data Centers
- Point-to-Point Links
- Control Lines and Sense Loops
- Oil & Gas

Description

Data surge protector (also known as SPD or lightning protector) 1101-859 from Transtector is an outdoor style SPD that utilizes state of the art SASD technology to protect critical equipment in 10/100 Base-T Ethernet/90V PoE protocol data networks while remaining transparent to data throughput. This surge protector provides effective protection against electrical transient surges that are generated both by external lightning events and by internal switching events and supports long-term system reliability by absorbing high amounts of transient energy while maintaining a very low clamping voltage. Transtector Data Signal surge protectors are available in stock with same day shipping.

Electrical Specifications

Description	Minimum	Typical	Maximum	Units
Connectors		110 Punch Down Block		
Compatible Cables		Cat5/5e UTP		
Data Protocols		10/100 Base-T Ethernet/90V PoE		
Data Rate			100	Mb/s
Vdc Rating (Data)		55	90	Vdc
PoE Power			55	W
PoE Current Per Pin			1	A

Surge Protection Specification

Description	Minimum	Typical	Maximum	Units
Surge Protection Technology		SASD		
Protection Modes		L-G, L-L		
10/1000 μ s Surge Current				

Click the following link (or enter part number in "SEARCH" on website) to obtain additional part information including price, inventory and certifications:
[Data Surge Protector SPD ALPU Outdoor 10/100 Base-T Ethernet/90V PoE 110 Punch Down Block SASD 1101-859](#)

Data Surge Protector SPD ALPU Outdoor 10/100 Base-T
 Ethernet/90V PoE 110 Punch Down Block SASD

1101-859
 ALPU 90 V



L-G		150	A
L-L		150	A
8/20µs Surge Current			
L-G		1.5	kA
L-L		1.5	kA
V _{pl} 10/1000µs			
L-G	130 @ 150A		V _{pk}
V _{pl} 8/20µs			
L-G	152 @ 1.5kA		V _{pk}
Response Time		5	ns

Mechanical Specifications

Size

Height	6.4 in	[162.56 mm]
Width	4.68 in	[118.87 mm]
Depth	2.5 in	[63.5 mm]
Weight	1.35 lbs	[612.35 g]

Environmental Specifications

Operating Temperature	-40 to +85 deg C
Storage Temperature	-40 to +85 deg C

Environmental Protection Rating	NEMA 3R
---------------------------------	---------

Installation

Mount Type	Wall
Installation Hardware	#6 X 1" Self-Tapping Screw, Anchor
Grounding	Compression Lug #2 - #8 AWG

Click the following link (or enter part number in "SEARCH" on website) to obtain additional part information including price, inventory and certifications:
[Data Surge Protector SPD ALPU Outdoor 10/100 Base-T Ethernet/90V PoE 110 Punch Down Block SASD 1101-859](#)

Data Surge Protector SPD ALPU Outdoor 10/100 Base-T
Ethernet/90V PoE 110 Punch Down Block SASD

1101-859
ALPU 90 V



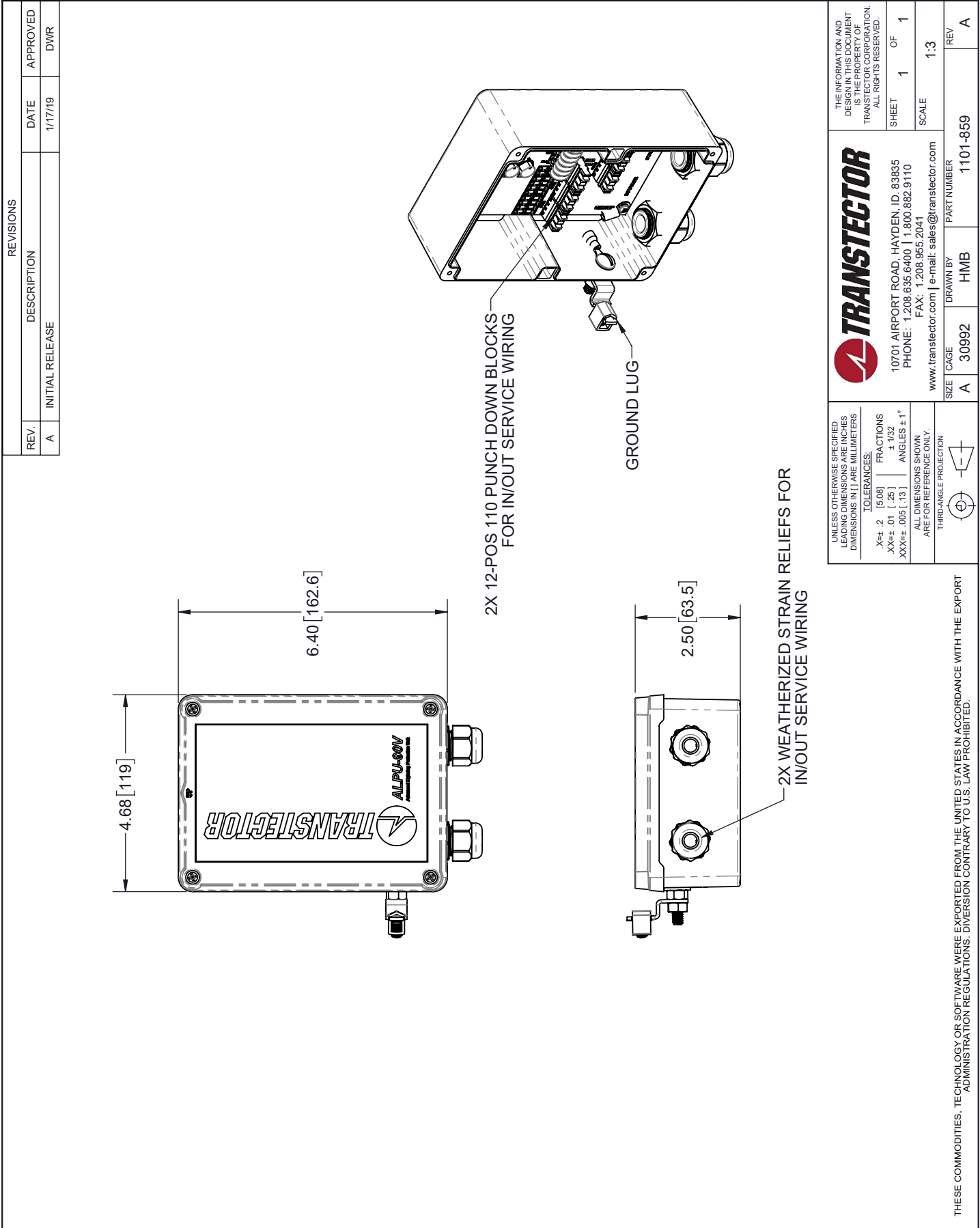
Transtector Systems specializes in protection of highly sensitive, low voltage equipment through its patented, non-degrading silicon diode technology and custom filters. Our power quality expertise translates into a diverse product offering including AC, DC, and signal applications as well as integrated cabinets, power distribution panels and EMP hardened devices.

Click the following link (or enter part number in "SEARCH" on website) to obtain additional part information including price, inventory and certifications: [Data Surge Protector SPD ALPU Outdoor 10/100 Base-T Ethernet/90V PoE 110 Punch Down Block SASD 1101-859](#)

URL: <https://www.transtector.com/data-surge-protector-spd-alpu-outdoor-10-1101-859-p.aspx>

The information contained in this document is accurate to the best of our knowledge and representative of the part described herein. It may be necessary to make modifications to the part and/or the documentation of the part, in order to implement improvements. Transtector reserves the right to make such changes as required. Unless otherwise stated, all specifications are nominal. Transtector does not make any representation or warranty regarding the suitability of the part described herein for any particular purpose, and Transtector does not assume any liability arising out of the use of any part or documentation.

1101-859 CAD Drawing



REVISIONS		
REV.	DESCRIPTION	DATE
A	INITIAL RELEASE	1/17/19
		APPROVED
		DWR

UNLESS OTHERWISE SPECIFIED LEADING DIMENSIONS ARE INCHES DIMENSIONS IN [] ARE MILLIMETERS TOLERANCES: .X±.2 [5.08] FRACTIONS ± 1/32 .XX±.01 [.25] ANGLES ± 1° XXX±.005 [.13]		THE INFORMATION AND DESIGN IN THIS DOCUMENT IS THE PROPERTY OF TRANSTECTOR CORPORATION. ALL RIGHTS RESERVED. SHEET 1 OF 1 SCALE 1:3	
ALL DIMENSIONS SHOWN ARE FOR REFERENCE ONLY. THIRD-ANGLE PROJECTION		TRANSTECTOR 10701 AIRPORT ROAD, HAYDEN, ID. 83835 PHONE: 1.208.635.6400 1.800.882.9110 FAX: 1.208.955.2041 www.transtector.com e-mail: sales@transtector.com	
SIZE	CAGE	DRAWN BY	PART NUMBER
A	30992	HMB	1101-859
			REV
			A

THESE COMMODITIES, TECHNOLOGY OR SOFTWARE WERE EXPORTED FROM THE UNITED STATES IN ACCORDANCE WITH THE EXPORT ADMINISTRATION REGULATIONS. DIVERSION CONTRARY TO U.S. LAW PROHIBITED.