

## Data Surge Protector SPD ALPU Outdoor Gigabit Ethernet Shielded RJ45 SASD CE Compliant, IEC60950-1, ATEX, UL



### 1101-935 ALPU-1000BT-CS-M

#### Features

- UL/IEC60950-1, ATEX
- Models for all Common Ethernet/PoE Protocols
- Shielded RJ-45 or Punch Down Block Wiring
- Pole or Wall Mount
- Pole Mount Kit Accessory 1000-1164

#### Applications

- Gigabit Ethernet Networks
- Telecommunications Base Stations
- WISP/ISP
- IT & Data Centers
- Point-to-Point Links
- Control Lines and Sense Loops
- Oil & Gas

#### Description

Data surge protector (also known as SPD or lightning protector) 1101-935 from Transtector is an outdoor style SPD that utilizes state of the art SASD technology to protect critical equipment in Gigabit Ethernet protocol data networks, while remaining transparent to data throughput. This surge protector provides effective protection against electrical transient surges that are generated both by external lightning events and by internal switching events and supports long-term system reliability by absorbing high amounts of transient energy while maintaining a very low clamping voltage. Transtector Data Signal surge protectors are available in stock with same day shipping.

#### Electrical Specifications

Description	Minimum	Typical	Maximum	Units
Connectors		Shielded RJ45		
Compatible Cables		Cat5/5e UTP/STP, Cat6/6A STP		
Data Protocols		Gigabit Ethernet		
Data Rate			1,000	Mb/s
Characteristic Impedance			100	Ohms
Capacitance (Common)			15	pF
Vdc Rating (Data)		3.3	6	Vdc

#### Surge Protection Specification

Description	Minimum	Typical	Maximum	Units
Surge Protection Technology		SASD		
Protected Pins		[1,2], [3,6], [4,5], [7,8]		
Protection Modes		L-G		

Click the following link (or enter part number in "SEARCH" on website) to obtain additional part information including price, inventory and certifications:  
[Data Surge Protector SPD ALPU Outdoor Gigabit Ethernet Shielded RJ45 SASD CE Compliant, IEC60950-1, ATEX, UL 1101-935](#)

Data Surge Protector SPD ALPU Outdoor Gigabit Ethernet  
 Shielded RJ45 SASD CE Compliant, IEC60950-1, ATEX, UL



**1101-935**  
 ALPU-1000BT-CS-M

10/1000µs Surge Current			
L-G		100	A
Vpl 10/1000µs			
L-G	25 @ 100A		Vpk
Response Time		5	ns

**Mechanical Specifications**

**Size**

Height	7.14 in	[181.36 mm]
Width	5.69 in	[144.53 mm]
Depth	1.65 in	[41.91 mm]
Weight	0.8 lbs	[362.87 g]

**Environmental Specifications**

Operating Temperature	-40 to +75 deg C
Storage Temperature	-40 to +75 deg C
Environmental Protection Rating	NEMA 3R
Mount Type	Pole/Wall
Installation Hardware	#6 X 1" Self-Tapping Screw, Anchor
Grounding	1/4-20 Screw, Washer

**Compliance Certifications**

CE Compliant	Yes
UL Compliant	Yes
Hazardous Locations	Yes
Certifications	ATEX IEC60950-1 Haz Loc Ratings 6Vdc, 4A (1A per line), IP54 Class 1 Division 2 Groups A,B,C,D T6 Class 1 Zone2 Aex ec IIC T6 Gc Ex ec IIC T6 Gc II 3 G Ex ec IIC T6 Gc ITS15ATEX48178X

Click the following link (or enter part number in "SEARCH" on website) to obtain additional part information including price, inventory and certifications:  
[Data Surge Protector SPD ALPU Outdoor Gigabit Ethernet Shielded RJ45 SASD CE Compliant, IEC60950-1, ATEX, UL 1101-935](#)

Data Surge Protector SPD ALPU Outdoor Gigabit Ethernet  
Shielded RJ45 SASD CE Compliant, IEC60950-1, ATEX, UL



**1101-935**  
ALPU-1000BT-CS-M

---

ETL14CA101699377X  
NOM

Transtector Systems specializes in protection of highly sensitive, low voltage equipment through its patented, non-degrading silicon diode technology and custom filters. Our power quality expertise translates into a diverse product offering including AC, DC, and signal applications as well as integrated cabinets, power distribution panels and EMP hardened devices.

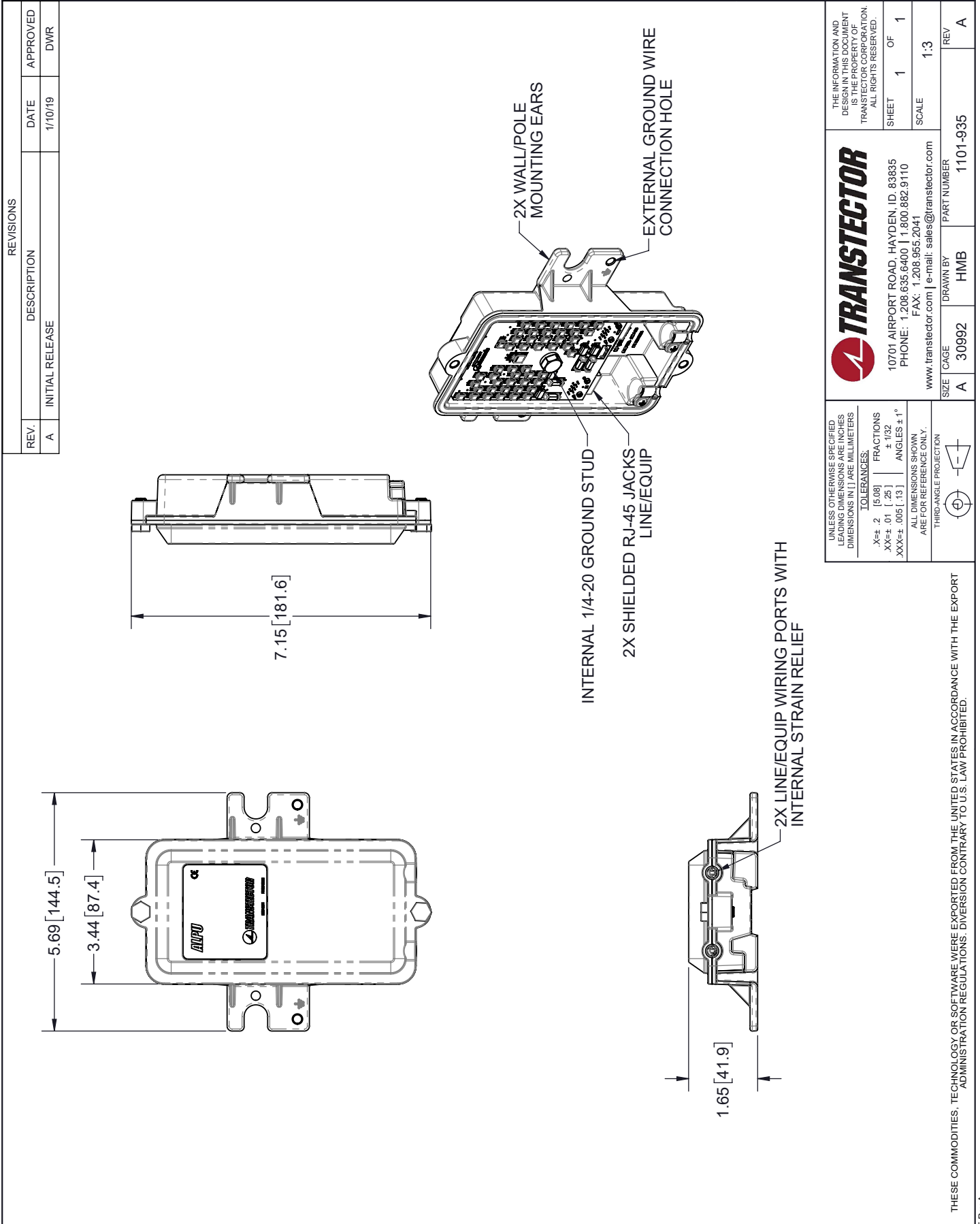
Click the following link (or enter part number in “SEARCH” on website) to obtain additional part information including price, inventory and certifications: [Data Surge Protector SPD ALPU Outdoor Gigabit Ethernet Shielded RJ45 SASD CE Compliant, IEC60950-1, ATEX, UL 1101-935](#)

URL: <https://www.transtector.com/data-surge-protector-spd-alpu-outdoor-gigabit-1101-935-p.aspx>

The information contained in this document is accurate to the best of our knowledge and representative of the part described herein. It may be necessary to make modifications to the part and/or the documentation of the part, in order to implement improvements. Transtector reserves the right to make such changes as required. Unless otherwise stated, all specifications are nominal. Transtector does not make any representation or warranty regarding the suitability of the part described herein for any particular purpose, and Transtector does not assume any liability arising out of the use of any part or documentation.

Data Surge Protector SPD ALPU Outdoor Gigabit Ethernet Shielded RJ45 SASD CE Compliant, IEC60950-1, ATEX, UL

1101-935 CAD Drawing



THESE COMMODITIES, TECHNOLOGY OR SOFTWARE WERE EXPORTED FROM THE UNITED STATES IN ACCORDANCE WITH THE EXPORT ADMINISTRATION REGULATIONS. DIVERSION CONTRARY TO U.S. LAW PROHIBITED.