

## Data Surge Protector SPD CPX Indoor 8 Port Gigabit Ethernet RJ45 GDT, TBU, UL 497B



### 1101-988 CPX 8 Port Gigabit Ethernet (Fused)

#### Features

- UL 497B
- Configurable Mixed Signal Protection
- RJ-45 Connectivity
- Loaded with 8 GbE Protection Modules
- Fused and Non-Fused Options
- Rack Mount

#### Applications

- Gigabit Ethernet Networks
- Telecommunications Base Stations
- WISP/ISP
- IT & Data Centers
- Point-to-Point Links
- Control Lines and Sense Loops
- Oil & Gas

#### Description

Data surge protector (also known as SPD or lightning protector) 1101-988 from Transtector is an indoor style SPD that utilizes state of the art TBU/GDT technology to protect critical equipment in Gigabit Ethernet protocol data networks while remaining transparent to data throughput. This surge protector provides effective protection against electrical transient surges that are generated both by external lightning events and by internal switching events and supports long-term system reliability by absorbing high amounts of transient energy while maintaining a very low clamping voltage. Transtector Data Signal surge protectors are available in stock with same day shipping.

#### Electrical Specifications

Description	Minimum	Typical	Maximum	Units
Connectors		RJ45		
Compatible Cables		Cat5/5e UTP		
Data Protocols		Gigabit Ethernet		
Data Rate			1,000	Mb/s
Series Impedance (Data)			9	Ohms
Capacitance (Common)			3	pF
Vdc Rating (Data)		3.3	11	Vdc

#### Surge Protection Specification

Description	Minimum	Typical	Maximum	Units
Surge Protection Technology		GDT, TBU		
Protected Pins		[1,2], [3,6], [4,5], [7,8]		

Click the following link (or enter part number in "SEARCH" on website) to obtain additional part information including price, inventory and certifications:  
[Data Surge Protector SPD CPX Indoor 8 Port Gigabit Ethernet RJ45 GDT, TBU, UL 497B 1101-988](#)

Data Surge Protector SPD CPX Indoor 8 Port Gigabit  
 Ethernet RJ45 GDT, TBU, UL 497B



**1101-988**  
 CPX 8 Port Gigabit Ethernet (Fused)

Protection Modes	L-G, L-L		
10/1000 $\mu$ s Surge Current			
L-G		100	A
8/20 $\mu$ s Surge Current			
L-G		20	kA
Response Time		75	ns

**Mechanical Specifications**

**Size**

Height	1.75 in	[44.45 mm]
Width	19 in	[482.6 mm]
Depth	3.3 in	[83.82 mm]
Weight	1 lbs	[453.59 g]

**Environmental Specifications**

Operating Temperature	-40 to +75 deg C
Storage Temperature	-40 to +75 deg C

**Installation**

Mount Type	19" Rack
Installation Hardware	12-24 X 3/4" PH Phillips
Grounding	Dual 1/4" x 20 Studs

**Compliance Certifications**

UL Compliant	Yes
Certifications	UL 497B

Click the following link (or enter part number in "SEARCH" on website) to obtain additional part information including price, inventory and certifications:  
[Data Surge Protector SPD CPX Indoor 8 Port Gigabit Ethernet RJ45 GDT, TBU, UL 497B 1101-988](#)

Data Surge Protector SPD CPX Indoor 8 Port Gigabit  
Ethernet RJ45 GDT, TBU, UL 497B



**1101-988**  
CPX 8 Port Gigabit Ethernet (Fused)

---

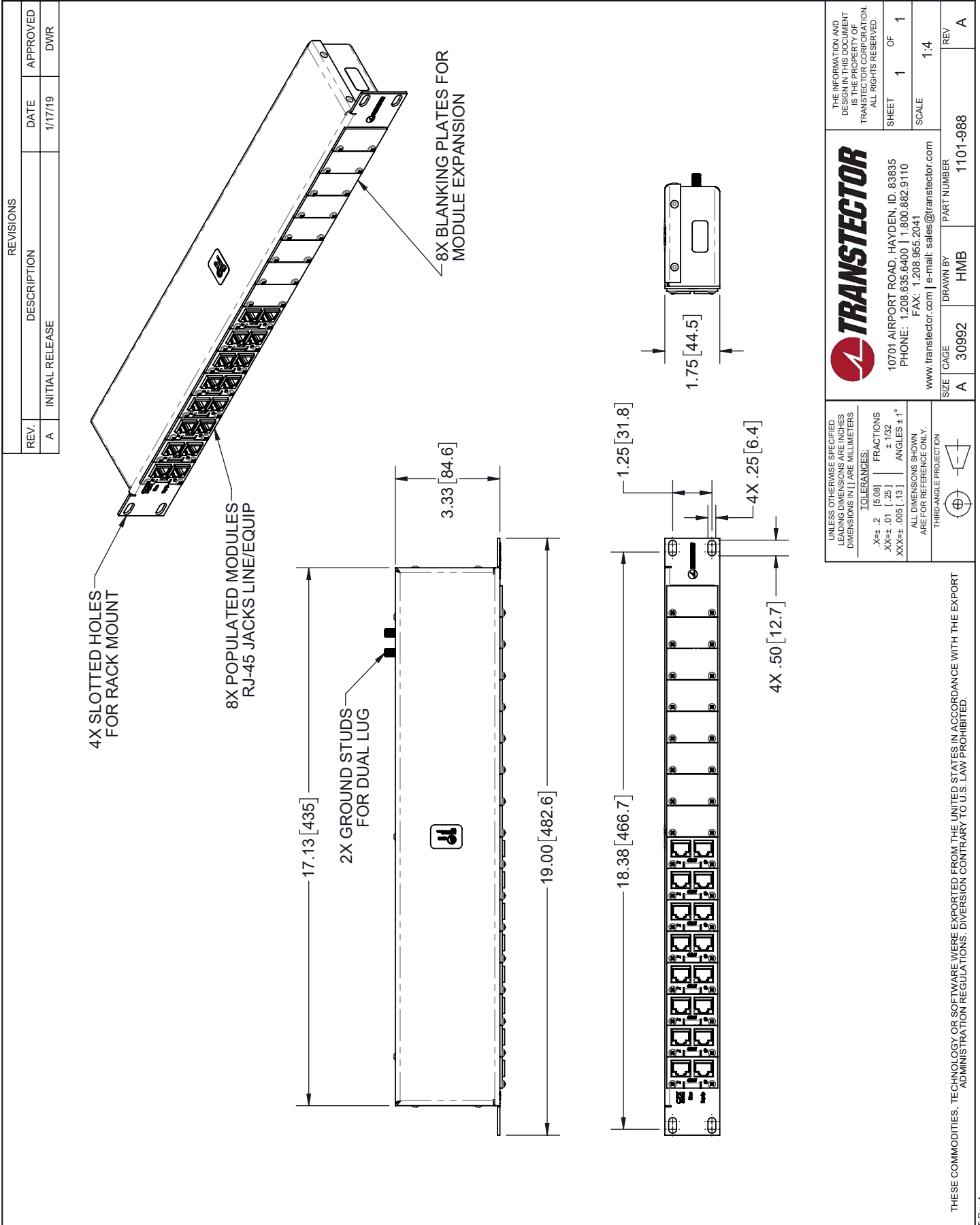
Transtector Systems specializes in protection of highly sensitive, low voltage equipment through its patented, non-degrading silicon diode technology and custom filters. Our power quality expertise translates into a diverse product offering including AC, DC, and signal applications as well as integrated cabinets, power distribution panels and EMP hardened devices.

Click the following link (or enter part number in "SEARCH" on website) to obtain additional part information including price, inventory and certifications: [Data Surge Protector SPD CPX Indoor 8 Port Gigabit Ethernet RJ45 GDT, TBU, UL 497B 1101-988](#)

URL: <https://www.transtector.com/data-surge-protector-spd-cpx-indoor-8-1101-988-p.aspx>

The information contained in this document is accurate to the best of our knowledge and representative of the part described herein. It may be necessary to make modifications to the part and/or the documentation of the part, in order to implement improvements. Transtector reserves the right to make such changes as required. Unless otherwise stated, all specifications are nominal. Transtector does not make any representation or warranty regarding the suitability of the part described herein for any particular purpose, and Transtector does not assume any liability arising out of the use of any part or documentation.

1101-988 CAD Drawing



		THE INFORMATION AND DESIGN IN THIS DOCUMENT IS THE PROPERTY OF TRANSTECTOR CORPORATION. ALL RIGHTS RESERVED.	
10701 AIRPORT ROAD, HAYDEN, ID, 83835 PHONE: 1.208.635.6400   1.800.882.9110 FAX: 1.208.955.2041 www.transtector.com   e-mail: sales@transtector.com		SHEET 1 OF 1 SCALE 1:4	REV A
SIZE A CAGE 30992	DRAWN BY HMB	PART NUMBER 1101-988	REV A
UNLESS OTHERWISE SPECIFIED LEADING DIMENSIONS ARE INCHES DIMENSIONS IN [ ] ARE MILLIMETERS TOLERANCES: .X±.2 [5.08] FRACTIONS ±.162 XX±.01 [.25] ANGLES ±1° XXX±.005 [.13] ALL DIMENSIONS SHOWN ARE FOR REFERENCE ONLY. THIRD-ANGLE PROJECTION			

THESE COMMODITIES, TECHNOLOGY OR SOFTWARE WERE EXPORTED FROM THE UNITED STATES IN ACCORDANCE WITH THE EXPORT ADMINISTRATION REGULATIONS. DIVERSION CONTRARY TO U.S. LAW PROHIBITED.