

## Data Surge Protector SPD ALPU Outdoor Gigabit Ethernet/ PoE Injector Shielded RJ45 DC Terminal GDT, MOV, SASD

### 1101-998 ALPU PoE INJ



#### Features

- Models for all Common Ethernet/PoE Protocols
- Shielded RJ-45 or Punch Down Block Wiring
- Pole or Wall Mount

#### Applications

- Gigabit Ethernet/PoE Injector Networks
- Telecommunications Base Stations
- WISP/ISP
- IT & Data Centers
- Point-to-Point Links
- Control Lines and Sense Loops
- Oil & Gas

#### Description

Data surge protector (also known as SPD or lightning protector) 1101-998 from Transtector is an outdoor style SPD that utilizes state of the art SASD technology to protect critical equipment in Gigabit Ethernet/PoE Injector protocol data networks while remaining transparent to data throughput. This surge protector provides effective protection against electrical transient surges that are generated both by external lightning events and by internal switching events and supports long-term system reliability by absorbing high amounts of transient energy while maintaining a very low clamping voltage. Transtector Data Signal surge protectors are available in stock with same day shipping.

#### Electrical Specifications

| Description                   | Minimum | Typical                       | Maximum | Units |
|-------------------------------|---------|-------------------------------|---------|-------|
| Connectors                    |         | Shielded RJ45 to DC Terminal  |         |       |
| Compatible Cables             |         | Cat5/5e UTP/STP, Cat6/6A STP  |         |       |
| Data Protocols                |         | Gigabit Ethernet/PoE Injector |         |       |
| Data Rate                     |         |                               | 1,000   | Mb/s  |
| Capacitance (Differential)    |         |                               | 3       | pF    |
| Power over Ethernet Protocols |         | PoE+                          |         |       |
| Vdc Rating (Data)             |         | 48                            | 70      | Vdc   |
| PoE Power                     |         |                               | 96      | W     |
| PoE Current Per Pin           |         |                               | 2       | A     |

#### Surge Protection Specification

| Description                 | Minimum | Typical                    | Maximum | Units |
|-----------------------------|---------|----------------------------|---------|-------|
| Surge Protection Technology |         | GDT, MOV, SASD             |         |       |
| Protected Pins              |         | [1,2], [3,6], [4,5], [7,8] |         |       |

Click the following link (or enter part number in "SEARCH" on website) to obtain additional part information including price, inventory and certifications:  
[Data Surge Protector SPD ALPU Outdoor Gigabit Ethernet/PoE Injector Shielded RJ45 DC Terminal GDT, MOV, SASD 1101-998](#)

Data Surge Protector SPD ALPU Outdoor Gigabit Ethernet/  
 PoE Injector Shielded RJ45 DC Terminal GDT, MOV, SASD



**1101-998**  
 ALPU PoE INJ

|                         |           |     |     |
|-------------------------|-----------|-----|-----|
| Protection Modes        | L-G       |     |     |
| 10/1000µs Surge Current |           |     |     |
| L-G                     |           | 100 | A   |
| Vpl 10/1000µs           |           |     |     |
| L-G                     | 20 @ 100A |     | Vpk |

**Mechanical Specifications**

**Size**

|        |         |             |
|--------|---------|-------------|
| Height | 7.15 in | [181.61 mm] |
| Width  | 5.69 in | [144.53 mm] |
| Depth  | 1.65 in | [41.91 mm]  |
| Weight | 1.5 lbs | [680.39 g]  |

**Environmental Specifications**

|                                 |                  |
|---------------------------------|------------------|
| Operating Temperature           | -40 to +85 deg C |
| Storage Temperature             | -40 to +85 deg C |
| Environmental Protection Rating | NEMA 3R          |

**Installation**

|                       |                |
|-----------------------|----------------|
| Mount Type            | Pole/Wall      |
| Installation Hardware | Pole Mount Kit |
| Kit Contents          | 1000-1164      |

**Compliance Certifications**

|                |     |
|----------------|-----|
| RoHS Compliant | Yes |
|----------------|-----|

Click the following link (or enter part number in "SEARCH" on website) to obtain additional part information including price, inventory and certifications:  
[Data Surge Protector SPD ALPU Outdoor Gigabit Ethernet/PoE Injector Shielded RJ45 DC Terminal GDT, MOV, SASD 1101-998](#)

Data Surge Protector SPD ALPU Outdoor Gigabit Ethernet/  
PoE Injector Shielded RJ45 DC Terminal GDT, MOV, SASD

**1101-998**  
ALPU PoE INJ



Transtector Systems specializes in protection of highly sensitive, low voltage equipment through its patented, non-degrading silicon diode technology and custom filters. Our power quality expertise translates into a diverse product offering including AC, DC, and signal applications as well as integrated cabinets, power distribution panels and EMP hardened devices.

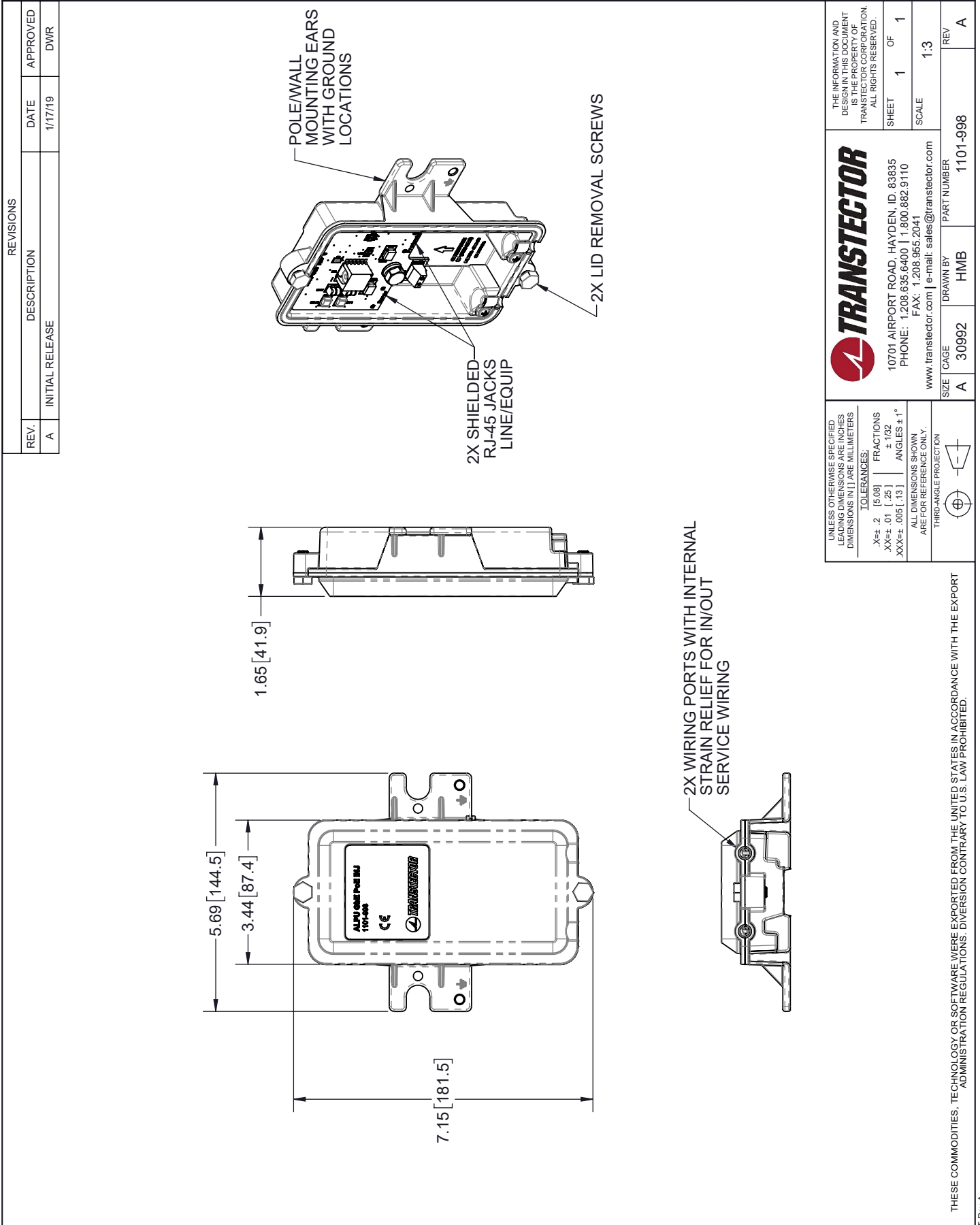
Click the following link (or enter part number in "SEARCH" on website) to obtain additional part information including price, inventory and certifications: [Data Surge Protector SPD ALPU Outdoor Gigabit Ethernet/PoE Injector Shielded RJ45 DC Terminal GDT, MOV, SASD 1101-998](#)

URL: <https://www.transtector.com/data-surge-protector-spd-alpu-outdoor-gigabit-1101-998-p.aspx>

The information contained in this document is accurate to the best of our knowledge and representative of the part described herein. It may be necessary to make modifications to the part and/or the documentation of the part, in order to implement improvements. Transtector reserves the right to make such changes as required. Unless otherwise stated, all specifications are nominal. Transtector does not make any representation or warranty regarding the suitability of the part described herein for any particular purpose, and Transtector does not assume any liability arising out of the use of any part or documentation.

Data Surge Protector SPD ALPU Outdoor Gigabit Ethernet/PoE Injector  
Shielded RJ45 DC Terminal GDT, MOV, SASD

1101-998 CAD Drawing



|   |   |  |  |
|---|---|--|--|
|   |   | THE INFORMATION AND DESIGN IN THIS DOCUMENT IS THE PROPERTY OF TRANSTECTOR CORPORATION. ALL RIGHTS RESERVED. |  |
| 10701 AIRPORT ROAD, HAYDEN, ID, 83835<br>PHONE: 1.208.635.6400   1.800.882.9110<br>FAX: 1.208.955.2041<br>www.transtector.com   e-mail: sales@transtector.com |   | SHEET 1 OF 1<br>SCALE 1:3  | REV A  |
| UNLESS OTHERWISE SPECIFIED LEADING DIMENSIONS ARE INCHES DIMENSIONS IN [ ] ARE MILLIMETERS  | TOLERANCES:<br>.X±.2 [5.08]<br>XX±.01 [.25]<br>XXX±.005 [.13] | FRACTIONS ± 1/32<br>ANGLES ± 1°  | ALL DIMENSIONS SHOWN ARE FOR REFERENCE ONLY.<br>THIRD-ANGLE PROJECTION |
| SIZE A<br>CAGE 30992  | DRAWN BY HMB  | PART NUMBER 1101-998   | REV A  |

THESE COMMODITIES, TECHNOLOGY OR SOFTWARE WERE EXPORTED FROM THE UNITED STATES IN ACCORDANCE WITH THE EXPORT ADMINISTRATION REGULATIONS. DIVERSION CONTRARY TO U.S. LAW PROHIBITED.

T-Rev A