

DC Surge Protector SPD I2R Indoor DIN-Rail 48 Vdc, Single-Mode, 40 kA MOV Class II

1104-11-005
I2R SA48 3-40



Features

- Tested to Meet Class II Applications
- MOV Surge Protector
- Visual Suppression Status Indicator
- Dry Contact Remote Annunciation Terminals
- Replaceable Suppression Modules
- DIN-Rail Mount

Applications

- Industrial Automation
- Controls & Sense Loops
- Telecommunications Base Stations
- IT & Data Centers
- Wastewater Treatment
- Rail
- Oil & Gas
- LED Lighting

Description

DC surge protector (also known as SPD or lightning protector) 1104-11-005 from Transtector is a DIN-Rail style SPD that utilizes state of the art MOV technology to protect critical equipment that operates on a 48 Vdc electrical service. This surge protector provides effective protection against electrical transient surges that are generated both by external lightning events and by internal switching events and supports long-term system reliability by safely shunting high amounts of transient energy while maintaining a very low clamping voltage. Transtector DC surge protectors are available in stock with same day shipping.

Electrical Specifications

Description	Minimum	Typical	Maximum	Units
Service Voltages		48		Vdc
Maximum Continuous Operating Voltage (MCOV)				
MCOV DC			75	Vdc

Surge Protection Specification

Description	Minimum	Typical	Maximum	Units
Surge Protection Technology		MOV		
Surge Protection Modes		Supply to RET, Supply to GND, RET to GND		
Response Time			25	ns
8/20µs Surge Current			40	kA
10/350µs Surge Current		5		kA
VPL 8/20µs L-G			700 @ 20kA	Vpk
Nominal Discharge Surge Current (In)		20		kA

Click the following link (or enter part number in "SEARCH" on website) to obtain additional part information including price, inventory and certifications:
[DC Surge Protector SPD I2R Indoor DIN-Rail 48 Vdc, Single-Mode, 40 kA MOV Class II 1104-11-005](#)

DC Surge Protector SPD I2R Indoor DIN-Rail
48 Vdc, Single-Mode, 40 kA MOV Class II

1104-11-005
I2R SA48 3-40



Mechanical Specifications

Size

Height	3.54 in	[89.92 mm]
Width	2.66 in	[67.56 mm]
Depth	2.12 in	[53.85 mm]
Weight	1 lbs	[453.59 g]
Housing Material and Plating	PA66	

Environmental Specifications

Temperature

Operating Range	-40 to +70 deg C
Storage Range	-40 to +70 deg C
Environmental Protection (IP) Rating	IP20
Humidity	95% non-condensing

Installation

Mount Type	DIN-Rail
Service Wiring Terminal	
Screw Clamp Terminal	#6 AWG Stranded
Service Terminal Wire 2	#4 AWG Solid
Status Indication Terminal	
3-Position Screw Terminal	#22 to #16 AWG

Compliance Certifications

Certifications	IEC EN 60529
----------------	--------------

Transtector Systems specializes in protection of highly sensitive, low voltage equipment through its patented, non-degrading silicon diode technology and custom filters. Our power quality expertise translates into a diverse product offering including AC, DC, and signal applications as well as integrated cabinets, power distribution panels and EMP hardened devices.

Click the following link (or enter part number in "SEARCH" on website) to obtain additional part information including price, inventory and certifications: [DC Surge Protector SPD I2R Indoor DIN-Rail 48 Vdc, Single-Mode, 40 kA MOV Class II 1104-11-005](https://www.transtector.com/dc-surge-protector-spd-i2r-indoor-din-1104-11-005-p.aspx)

URL: <https://www.transtector.com/dc-surge-protector-spd-i2r-indoor-din-1104-11-005-p.aspx>

The information contained in this document is accurate to the best of our knowledge and representative of the part described herein. It may be necessary to

Click the following link (or enter part number in "SEARCH" on website) to obtain additional part information including price, inventory and certifications: [DC Surge Protector SPD I2R Indoor DIN-Rail 48 Vdc, Single-Mode, 40 kA MOV Class II 1104-11-005](https://www.transtector.com/dc-surge-protector-spd-i2r-indoor-din-1104-11-005-p.aspx)

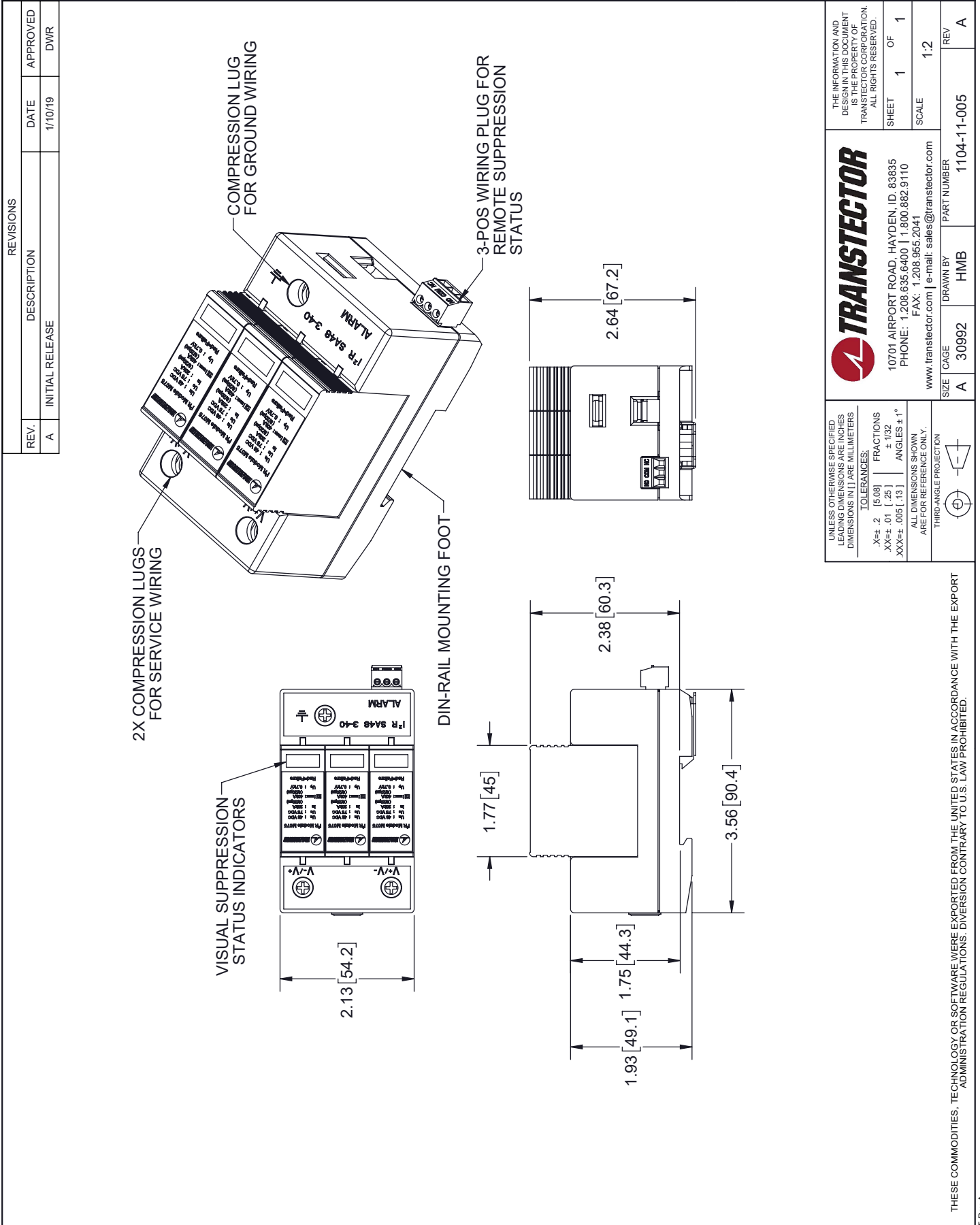
DC Surge Protector SPD I2R Indoor DIN-Rail
48 Vdc, Single-Mode, 40 kA MOV Class II

1104-11-005
I2R SA48 3-40



make modifications to the part and/or the documentation of the part, in order to implement improvements. Transtector reserves the right to make such changes as required. Unless otherwise stated, all specifications are nominal. Transtector does not make any representation or warranty regarding the suitability of the part described herein for any particular purpose, and Transtector does not assume any liability arising out of the use of any part or documentation.

1104-11-005 CAD Drawing



THESE COMMODITIES, TECHNOLOGY OR SOFTWARE WERE EXPORTED FROM THE UNITED STATES IN ACCORDANCE WITH THE EXPORT ADMINISTRATION REGULATIONS. DIVERSION CONTRARY TO U.S. LAW PROHIBITED.