

AC Inverter, 1U, 1KVA, 48Vdc Input, 100 - 120Vac Output, Static Transfer Switch



ACINV1-STS-1KVA AC Inverter

Features

- Pure sine wave output
- High output power in compact form factor
- Advanced microprocessor design
- Thermostat controlled cooling fans
- RS232 remote comm
- Overload, overtemp and short circuit protection
- Programmable output frequency

Applications

- Office equipment
- Computer/monitors
- Printer/scanners
- Facsimile machines

Description

AC inverter ACINV1-STS-1KVA from Transtector, is an indoor rack mount system that utilizes state of the art technology to convert DC power into AC power to feed AC loads. These units are equipped with a static transfer switch bypass, which allows for a redundant AC utility service to be connected to prevent downtime. Transtector AC inverters are available in stock with same day shipping.

Electrical Specifications

Description	Minimum	Typical	Maximum	Units
Service Voltage		48	62	Vdc
Output Frequency		50Hz or 60Hz		
Output Voltage	100	115	120	Vac
Input Current			15	A
Output Power			850	Watts
THD			3	%
STS AC Input Range		90 - 130 Vac		
STS AC Input Frequency Range		47 - 63 Hz		
STS Transfer Time		4 - 6 ms		
In-line Fuse		40		A

Mechanical Specifications

Size

Length	19 in	[482.6 mm]
Width	16.1 in	[408.94 mm]
Height	1.73 in	[43.94 mm]

Click the following link (or enter part number in "SEARCH" on website) to obtain additional part information including price, inventory and certifications:
[AC Inverter, 1U, 1KVA, 48Vdc Input, 100 - 120Vac Output, Static Transfer Switch ACINV1-STS-1KVA](#)

AC Inverter, 1U, 1KVA, 48Vdc Input, 100 - 120Vac
Output, Static Transfer Switch

ACINV1-STS-1KVA AC Inverter

Weight	16.5 lbs [7.48 kg]
Enclosure Material and Plating	Steel, Black Powder Coat

Monitoring and Control

Local Control Interfaces	Digital Display
Local Comm Interfaces	RS232C
Remote Comm Interfaces	SNMP
Local LED Status Indicators	OVP, UVP, OTP, OLP, VAC, AMP, WATT, VDC, TEMP, HZ
Alarm Relay Type	Form-C dry contacts, indicates presence of utility supply
Alarm Relays	0

Installation

Mount Type	19" rack mount
DC Service Connections	#6 AWG

Environmental Specifications

Temperature Continuous	-20 to +60 deg C
Temperature Momentary	-30 to +70 deg C

Compliance Certifications

UL Compliant	UL60950-1
RoHS Compliant	Yes
Other Compliance	FCC Class B

Transtector Systems specializes in protection of highly sensitive, low voltage equipment through its patented, non-degrading silicon diode technology and custom filters. Our power quality expertise translates into a diverse product offering including AC, DC, and signal applications as well as integrated cabinets, power distribution panels and EMP hardened devices.

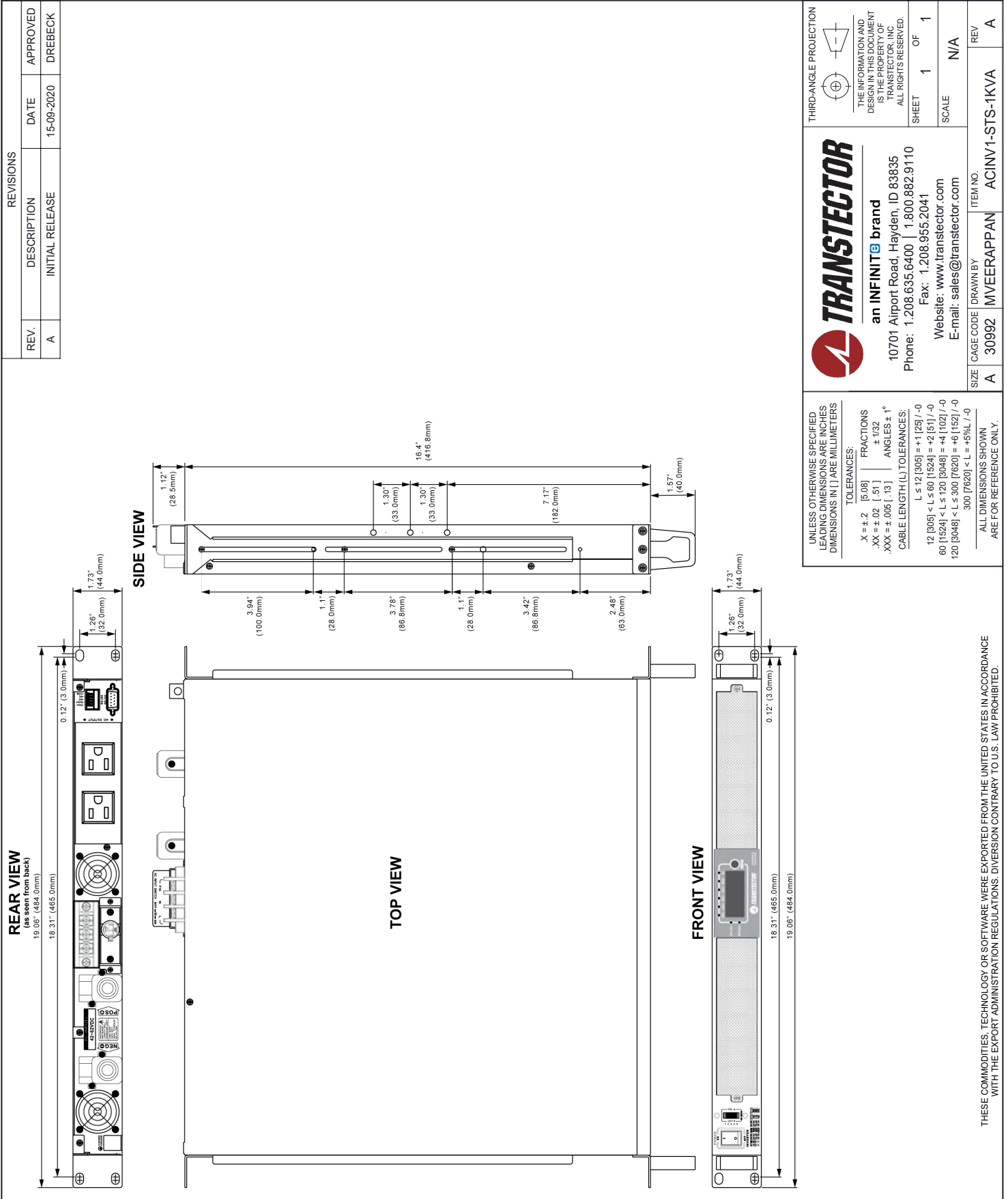
Click the following link (or enter part number in "SEARCH" on website) to obtain additional part information including price, inventory and certifications: [AC Inverter, 1U, 1KVA, 48Vdc Input, 100 - 120Vac Output, Static Transfer Switch AINV1-STS-1KVA](#)

URL: <https://www.transtector.com/ac-inverter-rack-mount-pdu-ac-indoor-acinv1-sts-1kva-p.aspx>

The information contained in this document is accurate to the best of our knowledge and representative of the part described herein. It may be necessary to make modifications to the part and/or the documentation of the part, in order to implement improvements. Transtector reserves the right to make such changes as required. Unless otherwise stated, all specifications are nominal. Transtector does not make any representation or warranty regarding the suitability of the part described herein for any particular purpose, and Transtector does not assume any liability arising out of the use of any part or documentation.

AC Inverter, 1U, 1KVA, 48Vdc Input, 100 - 120Vac Output, Static Transfer Switch

ACINV1-STS-1KVA CAD Drawing



REVISIONS			
REV.	DESCRIPTION	DATE	APPROVED
A	INITIAL RELEASE	15-09-2020	DREBECK

TRANSTECTOR
an INFINITE brand
10701 Airport Road, Hayden, ID 83835
Phone: 1.208.635.6400 | 1.800.862.9110
Fax: 1.208.955.2041
Website: www.transtector.com
E-mail: sales@transtector.com

THIRD-ANGLE PROJECTION

THE INFORMATION AND DESIGN IN THIS DOCUMENT IS THE PROPERTY OF TRANSTECTOR, INC. ALL RIGHTS RESERVED.
SHEET 1 OF 1
SCALE N/A

UNLESS OTHERWISE SPECIFIED LEADING DIMENSIONS ARE INCHES DIMENSIONS IN [] ARE MILLIMETERS

TOLERANCES:
X = ±.2 [5.08] FRACTIONS
.XX = ±.02 [.51] ±.132
.XXX = ±.005 [.13] ANGLES ± 1°
CABLE LENGTH (L) TOLERANCES:
L ≤ 12 [305] = +1 [25] / -0
12 [305] < L ≤ 60 [1524] = +2 [51] / -0
60 [1524] < L ≤ 120 [3048] = +4 [102] / -0
120 [3048] < L ≤ 300 [7620] = +6 [152] / -0
300 [7620] < L = +5% L / -0

ALL DIMENSIONS SHOWN ARE FOR REFERENCE ONLY.

SIZE A CAGE CODE 30992 DRAWN BY MVEERAPPAN ITEM NO. ACINV1-STS-1KVA REV A

T-Rev.D