

AC Surge Protector SPD SP PLUS Brick 120/208 Vac 3-Phase  
 Wye MOV 200 kA, UL 1449 4th Ed. Type 2, TAA



**B70-00-7005**  
 LEA SP 200 120/208-3Y

### Features

- UL1449 4th Ed.
- High Capacity MOV Protection
- Suppression Status LEDs
- Dry Contact Remote Annunciation Wire Leads
- Wall Mount
- Audible Alarm Switch

### Applications

- Electrical Panelboards
- Industrial Automation
- Communications Base Stations
- IT & Data Centers
- Switchgear
- Motor Control Centers
- Automatic Transfer Switches
- Wastewater Treatment
- Oil & Gas
- LED Lighting
- Schools
- Hospitals

### Description

AC surge protector (also known as SPD or lightning protector) B70-00-7005 from Transtector is a UL1449 4th Ed. brick style SPD that utilizes state of the art MOV technology to protect critical equipment that operates on a 120/208 Vac 3-Phase Wye electrical service. This surge protector provides effective protection against electrical transient surges that are generated both by external lightning events and by internal switching events and supports long-term system reliability by safely shunting high amounts of transient energy while maintaining a very low clamping voltage. Transtector AC surge protectors are available in stock with same day shipping.

### Electrical Specifications

Description	Minimum	Typical	Maximum	Units
Service Voltages		120/208		Vac
Service Type		3-Phase Wye		
Frequency	50		60	Hz
Maximum Continuous Operating Voltage (MCOV)				
L - L			220	Vac
L - N			127	Vac
L - G			127	Vac
N - G			127	Vac

### Surge Protection Specification

Description	Minimum	Typical	Maximum	Units
-------------	---------	---------	---------	-------

Click the following link (or enter part number in "SEARCH" on website) to obtain additional part information including price, inventory and certifications:  
[AC Surge Protector SPD SP PLUS Brick 120/208 Vac 3-Phase Wye MOV 200 kA, UL 1449 4th Ed. Type 2, TAA B70-00-7005](#)

AC Surge Protector SPD SP PLUS Brick 120/208 Vac 3-Phase  
 Wye MOV 200 kA, UL 1449 4th Ed. Type 2, TAA



**B70-00-7005**  
**LEA SP 200 120/208-3Y**

Surge Protection Technology	MOV		
Protection Modes	L-L, L-N, L-G		
8/20 $\mu$ s Surge Current		200	kA
Nominal Discharge Current Rating (In)	20		kA
VPR 8/20 $\mu$ s			
L - L		1,200	Vpk
L - N		700	Vpk
L - G		700	Vpk
N - G		700	Vpk
Response Time		25	ns
SCCR (Short Circuit Current Rating)	100		kAIC

**Mechanical Specifications**

**Size**

Height	3.5 in	[88.9 mm]
Width	6.3 in	[160.02 mm]
Depth	6.3 in	[160.02 mm]
Weight	5 lbs	[2.27 kg]
Housing Material and Plating	Gray Polycarbonate	

**Environmental Specifications**

Temperature Range (Operational)	-40 to +85 deg C
Environmental Protection Rating	NEMA 4
Humidity	95% non-condensing

**Installation**

Mount Type	Panel
------------	-------

**Compliance Certifications**

UL Compliant	Yes
TAA Compliant	Yes
Certifications	UL 1449 4th Ed.

Click the following link (or enter part number in "SEARCH" on website) to obtain additional part information including price, inventory and certifications:  
[AC Surge Protector SPD SP PLUS Brick 120/208 Vac 3-Phase Wye MOV 200 kA, UL 1449 4th Ed. Type 2, TAA B70-00-7005](#)

AC Surge Protector SPD SP PLUS Brick 120/208 Vac 3-Phase  
Wye MOV 200 kA, UL 1449 4th Ed. Type 2, TAA

**B70-00-7005**  
LEA SP 200 120/208-3Y



Transtector Systems specializes in protection of highly sensitive, low voltage equipment through its patented, non-degrading silicon diode technology and custom filters. Our power quality expertise translates into a diverse product offering including AC, DC, and signal applications as well as integrated cabinets, power distribution panels and EMP hardened devices.

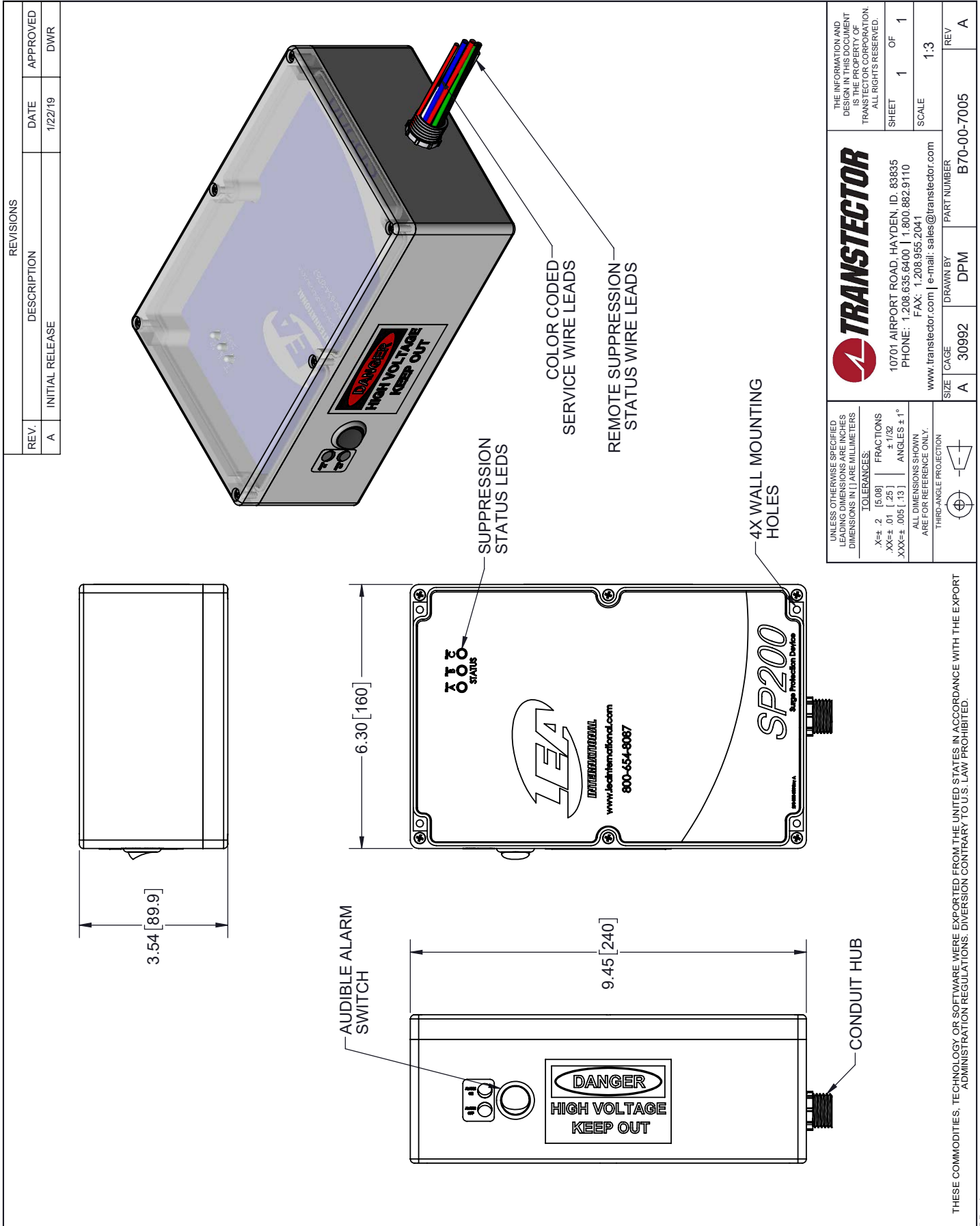
Click the following link (or enter part number in "SEARCH" on website) to obtain additional part information including price, inventory and certifications: [AC Surge Protector SPD SP PLUS Brick 120/208 Vac 3-Phase Wye MOV 200 kA, UL 1449 4th Ed. Type 2, TAA B70-00-7005](#)

URL: <https://www.transtector.com/ac-surge-protector-spd-sp-plus-brick-b70-00-7005-p.aspx>

The information contained in this document is accurate to the best of our knowledge and representative of the part described herein. It may be necessary to make modifications to the part and/or the documentation of the part, in order to implement improvements. Transtector reserves the right to make such changes as required. Unless otherwise stated, all specifications are nominal. Transtector does not make any representation or warranty regarding the suitability of the part described herein for any particular purpose, and Transtector does not assume any liability arising out of the use of any part or documentation.

AC Surge Protector SPD SP PLUS Brick 120/208 Vac 3-Phase  
 Wye MOV 200 kA, UL 1449 4th Ed. Type 2, TAA

**B70-00-7005 CAD Drawing**



REVISIONS		DATE	APPROVED
REV. A	INITIAL RELEASE	1/22/19	DWR

UNLESS OTHERWISE SPECIFIED LEADING DIMENSIONS ARE IN INCHES DIMENSIONS IN [ ] ARE MILLIMETERS TOLERANCES: .X±.2 [5.08] FRACTIONS ± 1/32 .XX±.01 [25] ANGLES ± 1° XXX±.005 [.13] ARE FOR REFERENCE ONLY. THIRD-ANGLE PROJECTION		THE INFORMATION AND DESIGN IN THIS DOCUMENT IS THE PROPERTY OF TRANSTECTOR CORPORATION. ALL RIGHTS RESERVED. SHEET 1 OF 1 SCALE 1:3	
<b>TRANSTECTOR</b> 10701 AIRPORT ROAD, HAYDEN, ID, 83835 PHONE: 1.208.635.6400   1.800.882.9110 FAX: 1.208.955.2041 www.transtector.com   e-mail: sales@transtector.com		CAGE CODE A 30992	DRAWN BY DPM
SIZE A	PART NUMBER B70-00-7005	REV A	

THESE COMMODITIES, TECHNOLOGY OR SOFTWARE WERE EXPORTED FROM THE UNITED STATES IN ACCORDANCE WITH THE EXPORT ADMINISTRATION REGULATIONS. DIVERSION CONTRARY TO U.S. LAW PROHIBITED.