

AC Surge Protector SPD SP PLUS Brick 277/480 Vac 3-Phase Wye
 MOV 200 kA, UL 1449 4th Ed. Type 2, TAA No Alarm Switch



B70-00-7010
 LEA SP 200 277/480-3Y

Features

- UL1449 4th Ed.
- High Capacity MOV Protection
- Suppression Status LEDs
- Dry Contact Remote Annunciation Wire Leads
- Wall Mount

Applications

- Electrical Panelboards
- Industrial Automation
- Communications Base Stations
- IT & Data Centers
- Switchgear
- Motor Control Centers
- Automatic Transfer Switches
- Wastewater Treatment
- Oil & Gas
- LED Lighting
- Schools
- Hospitals

Description

AC surge protector (also known as SPD or lightning protector) B70-00-7010 from Transtector is a UL1449 4th Ed. brick style SPD that utilizes state of the art MOV technology to protect critical equipment that operates on a 277/480 Vac 3-Phase Wye electrical service. This surge protector provides effective protection against electrical transient surges that are generated both by external lightning events and by internal switching events and supports long-term system reliability by safely shunting high amounts of transient energy while maintaining a very low clamping voltage. Transtector AC surge protectors are available in stock with same day shipping.

Electrical Specifications

Description	Minimum	Typical	Maximum	Units
Service Voltages		277/480		Vac
Service Type		3-Phase Wye		
Frequency	50		60	Hz
Maximum Continuous Operating Voltage (MCOV)				
L - L			508	Vac
L - N			293	Vac
L - G			293	Vac
N - G			293	Vac

Surge Protection Specification

Description	Minimum	Typical	Maximum	Units
-------------	---------	---------	---------	-------

Click the following link (or enter part number in "SEARCH" on website) to obtain additional part information including price, inventory and certifications:
[AC Surge Protector SPD SP PLUS Brick 277/480 Vac 3-Phase Wye MOV 200 kA, UL 1449 4th Ed. Type 2, TAA No Alarm Switch B70-00-7010](#)

AC Surge Protector SPD SP PLUS Brick 277/480 Vac 3-Phase Wye
 MOV 200 kA, UL 1449 4th Ed. Type 2, TAA No Alarm Switch



B70-00-7010
 LEA SP 200 277/480-3Y

Surge Protection Technology	MOV		
Protection Modes	L-L, L-N, L-G		
8/20 μ s Surge Current		200	kA
Nominal Discharge Current Rating (In)	20		kA
VPR 8/20 μ s			
L - L		2,000	Vpk
L - N		1,200	Vpk
L - G		1,200	Vpk
N - G		1,200	Vpk
Response Time		25	ns
SCCR (Short Circuit Current Rating)	100		kAIC

Mechanical Specifications

Size

Height	3.5 in	[88.9 mm]
Width	6.3 in	[160.02 mm]
Depth	6.3 in	[160.02 mm]
Weight	5.44 lbs	[2.47 kg]
Housing Material and Plating	Gray Polycarbonate	

Environmental Specifications

Temperature Range (Operational)	-40 to +85 deg C
Environmental Protection Rating	NEMA 4
Humidity	95% non-condensing

Installation

Mount Type	Panel
------------	-------

Compliance Certifications

UL Compliant	Yes
TAA Compliant	Yes
Certifications	UL 1449 4th Ed.

Click the following link (or enter part number in "SEARCH" on website) to obtain additional part information including price, inventory and certifications:
[AC Surge Protector SPD SP PLUS Brick 277/480 Vac 3-Phase Wye MOV 200 kA, UL 1449 4th Ed. Type 2, TAA No Alarm Switch B70-00-7010](#)

AC Surge Protector SPD SP PLUS Brick 277/480 Vac 3-Phase Wye
MOV 200 kA, UL 1449 4th Ed. Type 2, TAA No Alarm Switch

B70-00-7010
LEA SP 200 277/480-3Y



Transtector Systems specializes in protection of highly sensitive, low voltage equipment through its patented, non-degrading silicon diode technology and custom filters. Our power quality expertise translates into a diverse product offering including AC, DC, and signal applications as well as integrated cabinets, power distribution panels and EMP hardened devices.

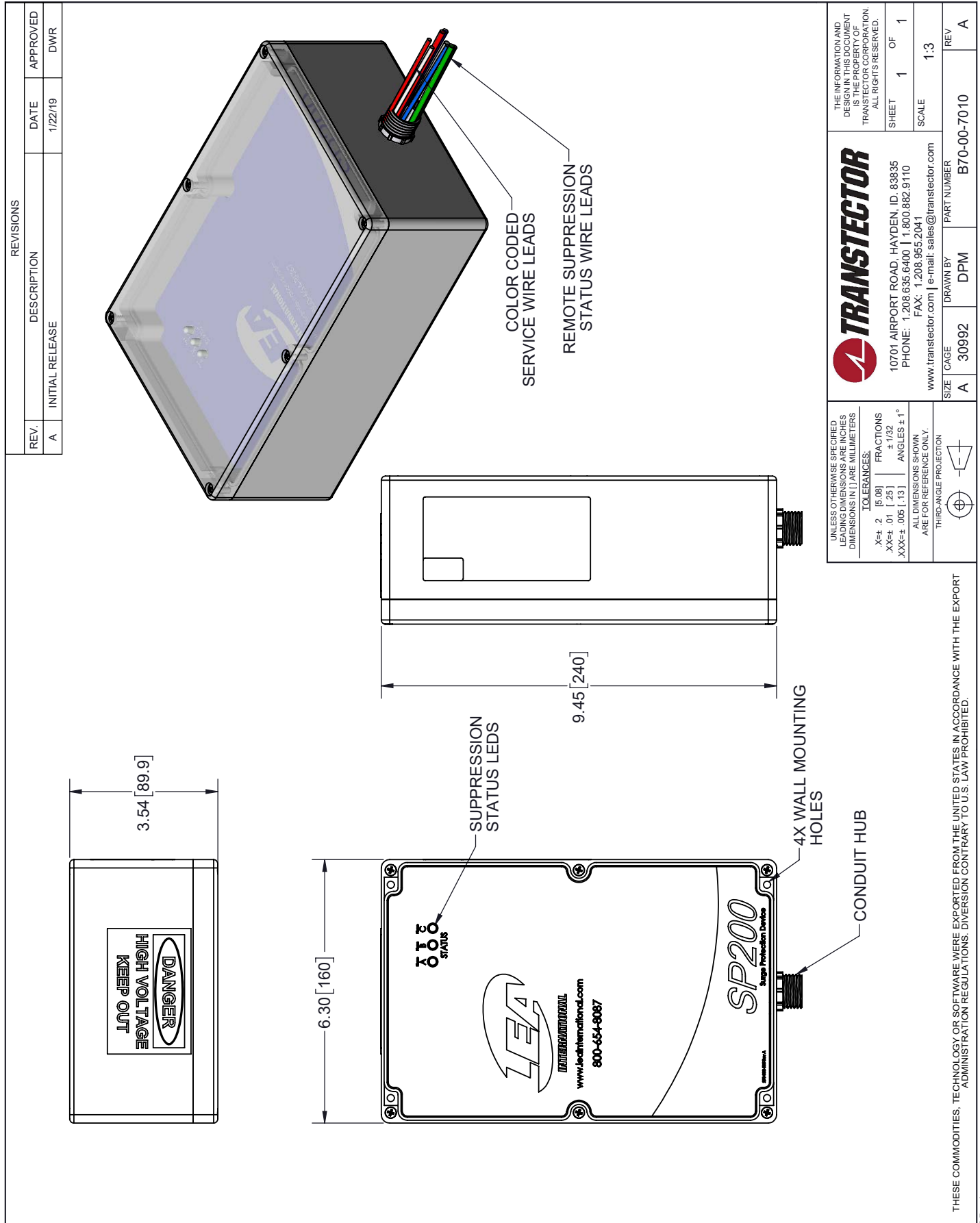
Click the following link (or enter part number in "SEARCH" on website) to obtain additional part information including price, inventory and certifications: [AC Surge Protector SPD SP PLUS Brick 277/480 Vac 3-Phase Wye MOV 200 kA, UL 1449 4th Ed. Type 2, TAA No Alarm Switch B70-00-7010](#)

URL: <https://www.transtector.com/ac-surge-protector-spd-sp-plus-brick-b70-00-7010-p.aspx>

The information contained in this document is accurate to the best of our knowledge and representative of the part described herein. It may be necessary to make modifications to the part and/or the documentation of the part, in order to implement improvements. Transtector reserves the right to make such changes as required. Unless otherwise stated, all specifications are nominal. Transtector does not make any representation or warranty regarding the suitability of the part described herein for any particular purpose, and Transtector does not assume any liability arising out of the use of any part or documentation.

AC Surge Protector SPD SP PLUS Brick 277/480 Vac 3-Phase Wye MOV
 200 kA, UL 1449 4th Ed. Type 2, TAA No Alarm Switch

B70-00-7010 CAD Drawing



REVISIONS			
REV.	DESCRIPTION	DATE	APPROVED
A	INITIAL RELEASE	1/22/19	DWR

UNLESS OTHERWISE SPECIFIED LEADING DIMENSIONS ARE IN INCHES DIMENSIONS IN [] ARE MILLIMETERS		THE INFORMATION AND DESIGN IN THIS DOCUMENT IS THE PROPERTY OF TRANSTECTOR CORPORATION. ALL RIGHTS RESERVED.	
TOLERANCES:		SHEET 1 OF 1	
.X" = ± .2 [5.08]	FRACTIONS ± 1/32	SCALE 1:3	
.XX" = ± .01 [.25]	ANGLES ± 1°	PART NUMBER B70-00-7010	
.XXX" = ± .005 [.13]	ALL DIMENSIONS SHOWN ARE FOR REFERENCE ONLY.	REV A	
THIRD-ANGLE PROJECTION		DRAWN BY DPM	
		SIZE CAGE A 30992	
TRANSTECTOR 10701 AIRPORT ROAD, HAYDEN, ID, 83835 PHONE: 1.208.635.6400 1.800.882.9110 www.transvector.com e-mail: sales@transvector.com		DRAWN BY DPM PART NUMBER B70-00-7010 REV A	

THESE COMMODITIES, TECHNOLOGY OR SOFTWARE WERE EXPORTED FROM THE UNITED STATES IN ACCORDANCE WITH THE EXPORT ADMINISTRATION REGULATIONS. DIVERSION CONTRARY TO U.S. LAW PROHIBITED.

T-Rev.A