

AC Surge Protector SPD POWER VANTAGE Panel 120/208 Vac 3-Phase Wye MOV 200 kA, UL 1449 4th Ed. Type 2 with Disconnect Switch

B94-00-2140
 LEA PV 200 120/208-3Y-D



Features

- UL1449 4th Ed. Type 1/Type 2
- High Capacity MOV Protection
- Suppression Status LEDs
- Surge Counter
- Audible Alarm
- Dry Contact Remote Annunciation Wire Leads
- Integral Disconnect Switch

Applications

- Electrical Panelboards
- Industrial Automation
- Communications Base Stations
- IT & Data Centers
- Switchgear
- Motor Control Centers
- Automatic Transfer Switches
- Wastewater Treatment
- Oil & Gas
- LED Lighting
- Schools
- Hospitals

Description

AC surge protector (also known as SPD or lightning protector) B94-00-2140 from Transtector is a UL1449 4th Ed. panel style SPD that utilizes state of the art MOV technology to protect critical equipment that operates on a 120/208 Vac 3-Phase Wye electrical service. This surge protector provides effective protection against electrical transient surges that are generated both by external lightning events and by internal switching events and supports long-term system reliability by safely shunting high amounts of transient energy while maintaining a very low clamping voltage. Transtector AC surge protectors are available in stock with same day shipping.

Electrical Specifications

| Description | Minimum | Typical | Maximum | Units |
|---|---------|-------------|---------|-------|
| Service Voltages | | 120/208 | | Vac |
| Service Type | | 3-Phase Wye | | |
| Frequency | 50 | | 60 | Hz |
| Maximum Continuous Operating Voltage (MCOV) | | | | |
| L - L | | | 220 | Vac |
| L - N | | | 220 | Vac |
| L - G | | | 220 | Vac |

Surge Protection Specification

| Description | Minimum | Typical | Maximum | Units |
|-------------|---------|---------|---------|-------|
|-------------|---------|---------|---------|-------|

Click the following link (or enter part number in "SEARCH" on website) to obtain additional part information including price, inventory and certifications: [AC Surge Protector SPD POWER VANTAGE Panel 120/208 Vac 3-Phase Wye MOV 200 kA, UL 1449 4th Ed. Type 2 with Disconnect Switch B94-00-2140](#)

AC Surge Protector SPD POWER VANTAGE Panel 120/208 Vac 3-Phase
 Wye MOV 200 kA, UL 1449 4th Ed. Type 2 with Disconnect Switch

B94-00-2140
 LEA PV 200 120/208-3Y-D



| | | | |
|---------------------------------------|--------------------|-------|------|
| Surge Protection Technology | MOV | | |
| Protection Modes | L-L, L-N, L-G, N-G | | |
| 8/20 μ s Surge Current | | 200 | kA |
| Nominal Discharge Current Rating (In) | 20 | | kA |
| VPR 8/20 μ s | | | |
| L - L | | 1,500 | Vpk |
| L - N | | 1,500 | Vpk |
| L - G | | 1,500 | Vpk |
| N - G | | 1,500 | Vpk |
| Response Time | | 25 | ns |
| SCCR (Short Circuit Current Rating) | 100 | | kAIC |

Mechanical Specifications

Size

| | | |
|------------------------------|--------|-------------|
| Height | 24 in | [609.6 mm] |
| Width | 16 in | [406.4 mm] |
| Depth | 8.9 in | [226.06 mm] |
| Weight | 60 lbs | [27.22 kg] |
| Housing Material and Plating | Steel | |

Environmental Specifications

| | |
|---------------------------------|--------------------|
| Temperature Range (Operational) | -40 to +65 deg C |
| Environmental Protection Rating | NEMA 3R |
| Humidity | 95% non-condensing |

Installation

| | |
|------------|-------|
| Mount Type | Panel |
|------------|-------|

Compliance Certifications

| | |
|-----------------------------|------------------------|
| UL Compliant Certifications | Yes UL 1449 4th Ed. |
|-----------------------------|------------------------|

Click the following link (or enter part number in "SEARCH" on website) to obtain additional part information including price, inventory and certifications: [AC Surge Protector SPD POWER VANTAGE Panel 120/208 Vac 3-Phase Wye MOV 200 kA, UL 1449 4th Ed. Type 2 with Disconnect Switch B94-00-2140](#)

AC Surge Protector SPD POWER VANTAGE Panel 120/208 Vac 3-Phase
Wye MOV 200 kA, UL 1449 4th Ed. Type 2 with Disconnect Switch

B94-00-2140
LEA PV 200 120/208-3Y-D



Transtector Systems specializes in protection of highly sensitive, low voltage equipment through its patented, non-degrading silicon diode technology and custom filters. Our power quality expertise translates into a diverse product offering including AC, DC, and signal applications as well as integrated cabinets, power distribution panels and EMP hardened devices.

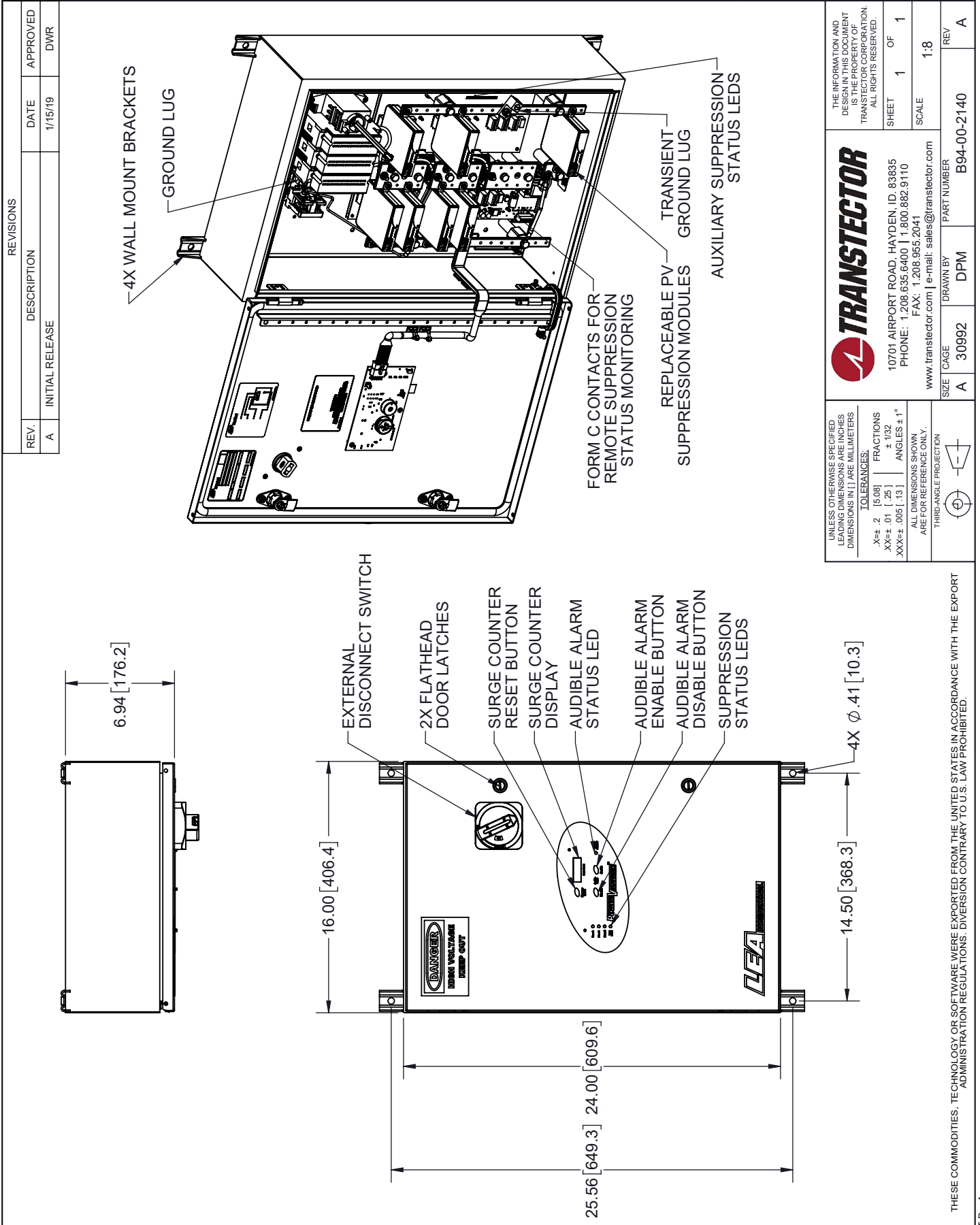
Click the following link (or enter part number in "SEARCH" on website) to obtain additional part information including price, inventory and certifications: [AC Surge Protector SPD POWER VANTAGE Panel 120/208 Vac 3-Phase Wye MOV 200 kA, UL 1449 4th Ed. Type 2 with Disconnect Switch B94-00-2140](#)

URL: <https://www.transtector.com/ac-surge-protector-spd-power-vantage-panel-b94-00-2140-p.aspx>

The information contained in this document is accurate to the best of our knowledge and representative of the part described herein. It may be necessary to make modifications to the part and/or the documentation of the part, in order to implement improvements. Transtector reserves the right to make such changes as required. Unless otherwise stated, all specifications are nominal. Transtector does not make any representation or warranty regarding the suitability of the part described herein for any particular purpose, and Transtector does not assume any liability arising out of the use of any part or documentation.

AC Surge Protector SPD POWER VANTAGE Panel 120/208 Vac 3-Phase Wye
MOV 200 kA, UL 1449 4th Ed. Type 2 with Disconnect Switch

B94-00-2140 CAD Drawing



| REVISIONS | | | |
|-----------|-----------------|---------|----------|
| REV. | DESCRIPTION | DATE | APPROVED |
| A | INITIAL RELEASE | 1/15/19 | DWR |

UNLESS OTHERWISE SPECIFIED LEADING DIMENSIONS ARE INCHES DIMENSIONS IN [] ARE MILLIMETERS

TOLERANCES:
 .X±.2 [5.08]
 XX±.01 [.25]
 XXX±.005 [.13]

FRACTIONS ± 1/32
 ANGLES ± 1°

ALL DIMENSIONS SHOWN ARE FOR REFERENCE ONLY.
 THIRD-ANGLE PROJECTION

THE INFORMATION AND DESIGN IN THIS DOCUMENT IS THE PROPERTY OF TRANSTECTOR CORPORATION. ALL RIGHTS RESERVED.

TRANSTECTOR
 10701 AIRPORT ROAD, HAYDEN, ID. 83835
 PHONE: 1.208.635.6400 | 1.800.882.9110
 FAX: 1.208.955.2041
 www.transtector.com | e-mail: sales@transtector.com

SHEET 1 OF 1
 SCALE 1:8

SIZE CAGE A 30992
 DRAWN BY DPM
 PART NUMBER B94-00-2140
 REV A

THESE COMMODITIES, TECHNOLOGY OR SOFTWARE WERE EXPORTED FROM THE UNITED STATES IN ACCORDANCE WITH THE EXPORT ADMINISTRATION REGULATIONS. DIVERSION CONTRARY TO U.S. LAW PROHIBITED.

T-Rev A