

DC Integrated Power System, 1RU, Single Feed, 30A/20A/15A/10A Load Breakers, 65A Battery Breaker, Load Controller



DCIPS1B-S-00-B6

DC Integrated Power System, 1RU, 30A/20A/15A/10A Load Breakers

Features

- Compatible with rectifier module part number DCIPS1-1200
- Integral AC/DC rectification
- High output power in compact form factor
- >95% efficiency rectifiers
- Pre-populated load breakers
- Pre-populated battery breakers
- Local LCD touchpad
- Local LED alarm/status indicators
- Form-C relay alarms
- Ethernet and SNMPv3 ports
- Remote monitoring and control

Applications

- Cellular
- Land Mobile Radio
- Utilities

Description

Integrated DC power system DCIPS1B-S-00-B6 from Transtector, is an intelligent indoor rack mount power distribution unit that utilizes state of the art technology to rectify AC power and distribute to DC loads. An advanced load controller with both local and remote interfaces controls rectifier outputs, monitors system parameters and provides alarms on system failures. Transtector integrated DC power systems are available in stock with same day shipping.

Electrical Specifications

Description	Minimum	Typical	Maximum	Units
Service Voltage	100	120	240	Vac
Frequency Range	47		63	Hz
Output Voltage		-48		Vdc
Output Float Voltage			-53.5	Vdc
Input Current		8	16	A
Output Current			45	A
Output Power		1.2	2.4	kWatts
Symmetry Inputs		6 or 12		
Rectifier Slots		2		
Rectifier Power Factor		0.98		
Load Breaker Amperages		1x 30A, 1x 20A, 1x 15A, 1x 10A		
Battery Breaker		65A		
Low Voltage Battery Disconnect		1x 80A Programmable		
Temperature Compensated Charging		Programmable		

Click the following link (or enter part number in "SEARCH" on website) to obtain additional part information including price, inventory and certifications:
[DC Integrated Power System, 1RU, Single Feed, 30A/20A/15A/10A Load Breakers, 65A Battery Breaker, Load Controller DCIPS1B-S-00-B6](#)

DC Integrated Power System, 1RU, Single Feed, 30A/20A/15A/10A
Load Breakers, 65A Battery Breaker, Load Controller

DCIPS1B-S-00-B6

DC Integrated Power System

Mechanical Specifications

Size

Length	18.9 in	[480.06 mm]
Width	10.41 in	[264.41 mm]
Height	1.72 in	[43.69 mm]
Weight	11 lbs	[4.99 kg]
Enclosure Material and Plating	Steel, Black Powder Coat	

Monitoring and Control

Local Control Interfaces	4 x 20 LCD, 4-key menu
Local Comm Interfaces	USB, RS232
Local Data Logging	microSD, 4GB max.
Remote Comm Interfaces	TCP/IP Ethernet, SNMPv3
Local LED Status Indicators	GRN = system on, YELLOW = message(s), Red = alarm(s)
Alarm Relays	4
External Digital I/O	2x Inputs, 2x Outputs (open collector)

Installation

Mount Type	19" or 23" rack mount
AC Service Connections	2.5mm ²
Load Breaker Connections	4mm ²
Battery Connections	16mm ²
Alarm Connections	1.5mm ²
Load Breaker Connections	4mm ²
Operating Temperature	-40 to +55deg C
Storage Temperature	-40 to +85deg C

Compliance Certifications

Other Compliance	EN 300 386; EN61000-6-3 (Emission); EN61000-6-2 (Immunity); IEC 60950-1:2005 Ed. +A1:2009
------------------	---

Click the following link (or enter part number in "SEARCH" on website) to obtain additional part information including price, inventory and certifications:
[DC Integrated Power System, 1RU, Single Feed, 30A/20A/15A/10A Load Breakers, 65A Battery Breaker, Load Controller DCIPS1B-S-00-B6](#)

DC Integrated Power System, 1RU, Single Feed, 30A/20A/15A/10A
Load Breakers, 65A Battery Breaker, Load Controller



DCIPS1B-S-00-B6 DC Integrated Power System

Transtector Systems specializes in protection of highly sensitive, low voltage equipment through its patented, non-degrading silicon diode technology and custom filters. Our power quality expertise translates into a diverse product offering including AC, DC, and signal applications as well as integrated cabinets, power distribution panels and EMP hardened devices.

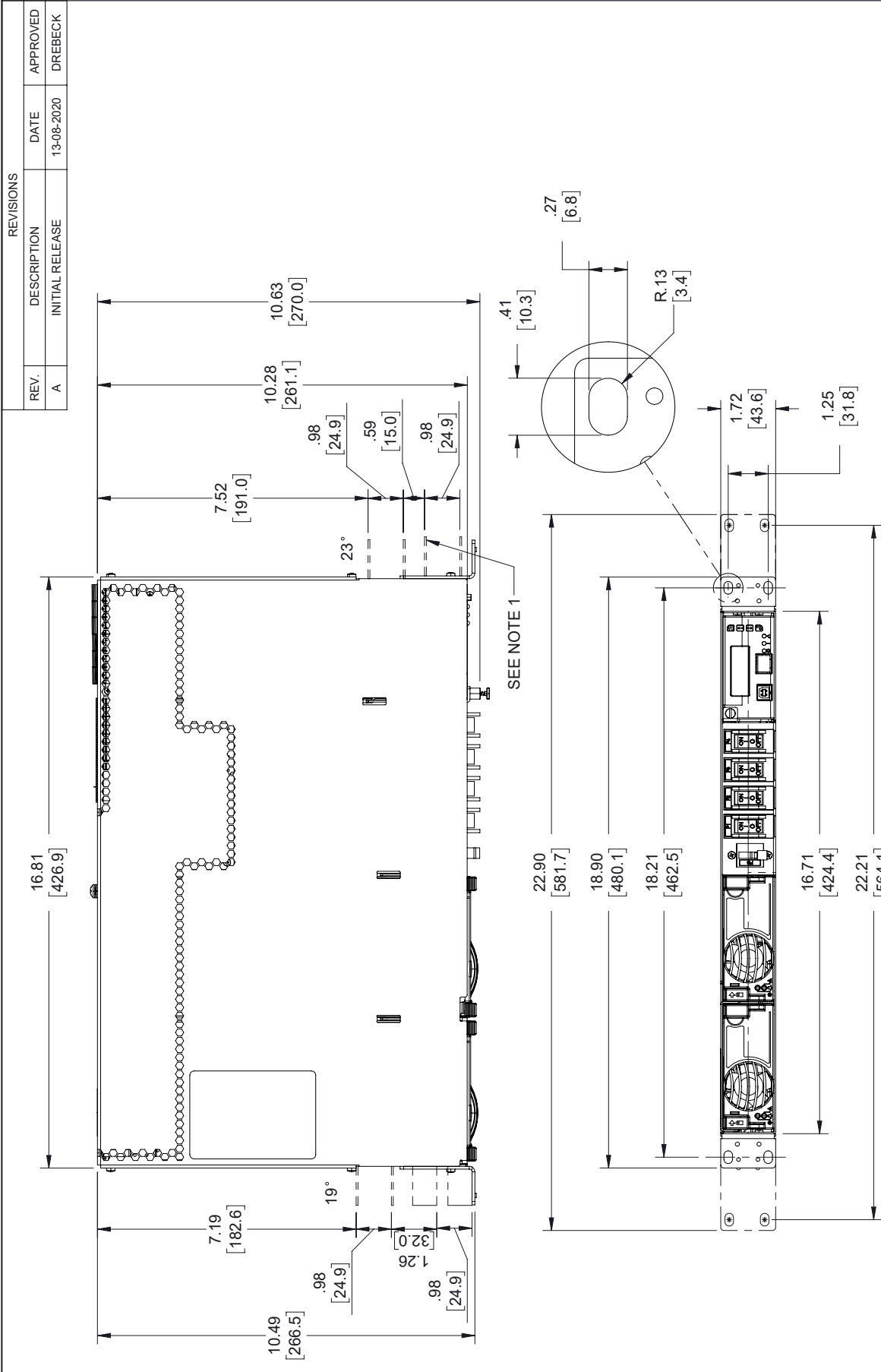
Click the following link (or enter part number in "SEARCH" on website) to obtain additional part information including price, inventory and certifications: [DC Integrated Power System, 1RU, Single Feed, 30A/20A/15A/10A Load Breakers, 65A Battery Breaker, Load Controller DCIPS1B-S-00-B6](#)

URL: <https://www.transtector.com/dc-integrated-power-system-rack-mount-pdu-dcips1b-s-00-b6-p.aspx>

The information contained in this document is accurate to the best of our knowledge and representative of the part described herein. It may be necessary to make modifications to the part and/or the documentation of the part, in order to implement improvements. Transtector reserves the right to make such changes as required. Unless otherwise stated, all specifications are nominal. Transtector does not make any representation or warranty regarding the suitability of the part described herein for any particular purpose, and Transtector does not assume any liability arising out of the use of any part or documentation.

DC Integrated Power System, 1RU, Single Feed, 30A/20A/15A/10A Load Breakers, 65A Battery Breaker, Load Controller

DCIPS1B-S-00-B6 CAD Drawing



REVISIONS			
REV.	DESCRIPTION	DATE	APPROVED
A	INITIAL RELEASE	13-08-2020	DREBECK

TRANSTECTOR
an INFINIT[®] brand

10701 Airport Road, Hayden, ID 83835
Phone: 1.208.635.6400 | 1.800.882.9110
Fax: 1.208.955.2041
Website: www.transvector.com
E-mail: sales@transvector.com

THIRD-ANGLE PROJECTION

THE INFORMATION AND DESIGN IN THIS DOCUMENT IS THE PROPERTY OF TRANSTECTOR, INC. ALL RIGHTS RESERVED.

SHEET 1 OF 1

SCALE N/A

UNLESS OTHERWISE SPECIFIED LEADING DIMENSIONS ARE IN INCHES DIMENSIONS IN [] ARE MILLIMETERS

TOLERANCES:

X ± .2 [5.08] FRACTIONS
.XX ± .02 [1.51] ± .132
XXX ± .005 [13] ANGLES ± 1°

CABLE LENGTH (L) TOLERANCES:
L ≤ 12 [305] = +1 [25] / -0
12 [305] < L ≤ 60 [1524] = +2 [51] / -0
60 [1524] < L ≤ 120 [3048] = +4 [102] / -0
120 [3048] < L ≤ 300 [7620] = +6 [152] / -0
300 [7620] < L = +5%L / -0

ALL DIMENSIONS SHOWN ARE FOR REFERENCE ONLY.

SIZE A CAGE CODE 30992 DRAWN BY MVEERAPPAN ITEM NO. DCIPS1B-S-00-B6 REV A

(19/23") - BREAKER CONFIGURATION SHOWN

NOTE: DOTTED LINES SHOW 23" BRACKET DETAIL.

THESE COMMODITIES, TECHNOLOGY OR SOFTWARE WERE EXPORTED FROM THE UNITED STATES IN ACCORDANCE WITH THE EXPORT ADMINISTRATION REGULATIONS. DIVERSION CONTRARY TO U.S. LAW PROHIBITED.