

Rack mount DC PDU Rack Mount PDU DC 1RU -24 to -48 Vdc Dual-Feed 2x 300A Feeds 8x Per Feed



## DCPDU1B-D-2X8-150

### Features

- Compatible with DCPDU1B Circuit Breakers, ranging from 1 to 30 A
- Circuit Breakers are Field-Configurable, no tools required
- -24/- 48 Vdc Inputs and Outputs
- 150A Bus Bar Inputs
- Alarm Indicator LEDs
- Form C contacts for Remote Status
- 19" & 23" Universal Mounting Brackets

### Applications

- Telecommunications Base Stations
- Land Mobile Radio
- First Responder Sites
- Emergency Management Systems
- Industrial Automation
- Utilities

### Description

Rack mount power distribution unit (also known as PDU) DCPDU1B-D-2X8-150 from Transtector is an DC 1RU PDU that accepts a -24 to -48 Vdc 2 x DC Feeds electrical service and distributes power to individual loads via 8x outputs per feed 1 to 30 A circuit breakers. This rack mount unit equipped with state-of-the-art surge protection that provides lightning protection for downstream equipment to support long-term system reliability. Transtector rack mount PDUs are available in stock with same day shipping. Transtector rack mount PDUs are available in stock with same day shipping.

### Electrical Specifications

Description	Minimum	Typical	Maximum	Units
Service Voltage	-24		-48	Vdc
Output Voltage		-48		Vdc
Maximum Continuous Operating Voltage (MCOV)				
Line to Return			-60	Vdc
Input Current			300	A
Output Current			300	A
Power Status LEDs				
RED		Breaker Alarm		
GRN		System normal		

Click the following link (or enter part number in "SEARCH" on website) to obtain additional part information including price, inventory and certifications:  
[Rack mount DC PDU Rack Mount PDU DC 1RU -24 to -48 Vdc Dual-Feed 2x 300A Feeds 8x Per Feed DCPDU1B-D-2X8-150](#)

Rack mount DC PDU Rack Mount PDU DC 1RU -24 to  
-48 Vdc Dual-Feed 2x 300A Feeds 8x Per Feed

## DCPDU1B-D-2X8-150

### Rack mount DC PDU

#### Mechanical Specifications

##### Size

Length	8.94 in	[227.08 mm]
Width	17.12 in	[434.85 mm]
Height	1.74 in	[44.2 mm]
Weight	10.3 lbs	[4.67 kg]
Enclosure Material and Plating	Steel, Black Powder Coat	

#### Monitoring and Control

Alarm Relay Type	Form C Contacts
Alarm Relays	2

#### Installation

Mount Type	19" or 23" rack mount
Service Wiring Terminals	
Bus bar	
Status Indication Terminals	
Spring Clamp Terminals	16 to 26 AWG
Operating Temperature	-10 to +70deg C
Storage Temperature	-40 to +85deg C

#### Compliance Certifications

UL Compliant	UL 60950-1 2nd Edition
--------------	------------------------

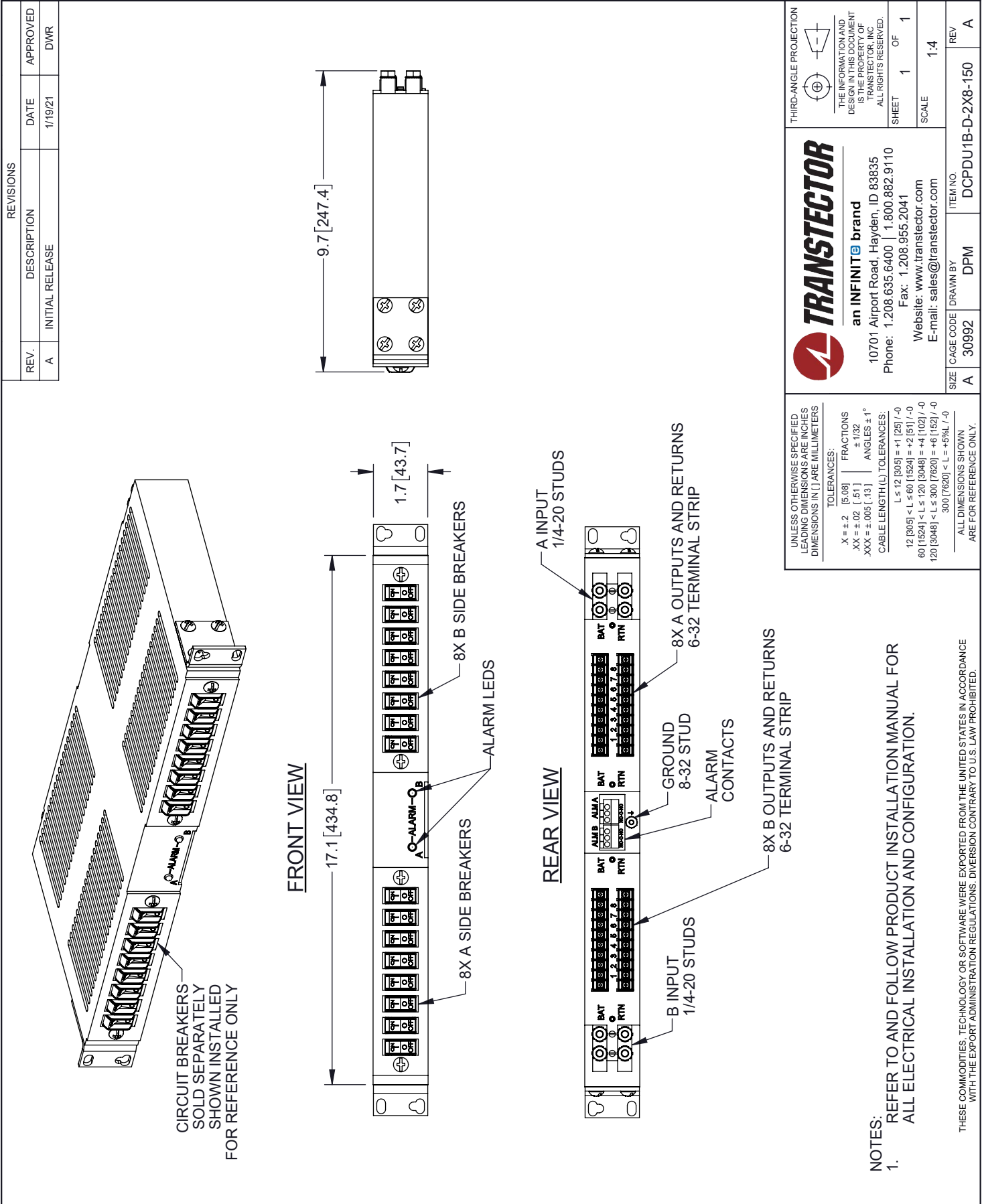
Transtector Systems specializes in protection of highly sensitive, low voltage equipment through its patented, non-degrading silicon diode technology and custom filters. Our power quality expertise translates into a diverse product offering including AC, DC, and signal applications as well as integrated cabinets, power distribution panels and EMP hardened devices.

Click the following link (or enter part number in "SEARCH" on website) to obtain additional part information including price, inventory and certifications: [Rack mount DC PDU Rack Mount PDU DC 1RU -24 to -48 Vdc Dual-Feed 2x 300A Feeds 8x Per Feed DCPDU1B-D-2X8-150](#)

URL: <https://www.transtector.com/rack-mount-dc-pdu-rack-mount-pdu-dc1b-d-2x8-150-p.aspx>

The information contained in this document is accurate to the best of our knowledge and representative of the part described herein. It may be necessary to make modifications to the part and/or the documentation of the part, in order to implement improvements. Transtector reserves the right to make such changes as required. Unless otherwise stated, all specifications are nominal. Transtector does not make any representation or warranty regarding the suitability of the part described herein for any particular purpose, and Transtector does not assume any liability arising out of the use of any part or documentation.

DCPDU1B-D-2X8-150 CAD Drawing



REVISIONS			
REV.	DESCRIPTION	DATE	APPROVED
A	INITIAL RELEASE	1/19/21	DWR

**TRANSTECTOR**  
an INFINITO brand

10701 Airport Road, Hayden, ID 83835  
Phone: 1.208.635.6400 | 1.800.882.9110  
Fax: 1.208.955.2041  
Website: www.transvector.com  
E-mail: sales@transvector.com

THIRD-ANGLE PROJECTION

THE INFORMATION AND DESIGN IN THIS DOCUMENT IS THE PROPERTY OF TRANSTECTOR, INC. ALL RIGHTS RESERVED.

SHEET 1 OF 1

SCALE 1:4

---

UNLESS OTHERWISE SPECIFIED LEADING DIMENSIONS ARE IN INCHES DIMENSIONS IN [ ] ARE MILLIMETERS

TOLERANCES:

X = ±.2	[.08]	FRACTIONS
.XX = ±.02	[.51]	± 1/32
.XXX = ±.005	[.13]	ANGLES ±.1°

CABLE LENGTH (L) TOLERANCES:

12 [305] < L ≤ 60 [1524]	= +1 [25] / -0
60 [1524] < L ≤ 120 [3048]	= +4 [102] / -0
120 [3048] < L ≤ 300 [7620]	= +6 [152] / -0
300 [7620] < L = +5%L / -0	

ALL DIMENSIONS SHOWN ARE FOR REFERENCE ONLY.

NOTES:

1. REFER TO AND FOLLOW PRODUCT INSTALLATION MANUAL FOR ALL ELECTRICAL INSTALLATION AND CONFIGURATION.

THESE COMMODITIES, TECHNOLOGY OR SOFTWARE WERE EXPORTED FROM THE UNITED STATES IN ACCORDANCE WITH THE EXPORT ADMINISTRATION REGULATIONS. DIVERSION CONTRARY TO U.S. LAW PROHIBITED.