

Power Over Ethernet PoE Midspan Injector Category 6 1 Port 802.3at Type B w/ Lightning Protection

PI-1C6-ATB-LP PoE Injector



Features

- IEEE 802.3at compatibility
- Power supply not included
- Midspan type PoE injector with Type B wiring
- Rugged die cast aluminum enclosure with integral mounting feet
- 1 port design
- Lightning and surge protection included

Applications

- IP Cameras
- VoIP (Voice over Internet Protocol) Telephones
- Access points, bridges, amplifiers and amplified antennas
- Building and control systems
- Digital signage
- Network switches
- Lighting systems
- Traffic systems
- Smart home and building
- POS systems

Description

Transtector's PI-1C6-ATB-LP single-port Gigabit Category 6 (Cat 6) Midspan/Injector is a commercial grade Power-over-Ethernet device that provides DC or AC power for one 10/100/1000 Base-T Power-over-Ethernet, PoE equipped network appliance device. PoE is used to supply power to devices such as Cameras, Access Points, IP Phones, and the like eliminating the need for an outlet near the devices and extra power cables. The unit uses Gigabit transformers on all four data pairs in contrast to cheaper designs that only use transformers for two pairs. It is compatible with devices that support the IEEE 802.3af and 802.3at standard PoE power feed using Mode B (Pins 4/5 and 7/8). The unit supports both positive and negative DC as well as AC power up to 60 volts. An integral PTC fuse cuts power in case of a short. The PTC fuse auto resets after the short is removed. The PI-1C6-ATB-LP features integral surge protection for the data and power feeds for networks. It has been designed to meet the GR-1089 Intra-Building surge protection requirements for Ethernet lines. The design provides protection for both common and differential mode surges utilizing three-pole differential Gas Tubes. The tubes feature ultra-low Line to Line and Line to Ground capacitance to minimize distortion of high-speed signals. The PI-1C6-ATB-LP features shielded RJ45 jacks. This along with a metal housing helps to reduce the effects of EMI interference. A ground lug and terminal is provided directly on the injector housing providing superior grounding. The cast aluminum housing includes integral mounting feet for ease of installation. This unit does not come with a power supply. The user can choose the appropriately sized power supply based on the equipment needs up to 60 volts DC or AC. Please see Transtector's PIPS series of power supplies to purchase one separately or look to other parts in the PI- injector family that do come with a power supply included. Transtector also sells Ethernet surge protection devices and Ethernet cables capable of connecting PoE devices. Check out Transtector's website and buy online today.

Electrical Specifications

Description	Minimum	Typical	Maximum	Units
Ethernet Connectors		RJ45 Jack		
PoE Version		802.3at		
Ethernet Standard		Category 6, 10/100/1000Base-T		
Max Current			1.5	A

Click the following link (or enter part number in "SEARCH" on website) to obtain additional part information including price, inventory and certifications:
[Power Over Ethernet PoE Midspan Injector Category 6 1 Port 802.3at Type B w/ Lightning Protection](#)

Power Over Ethernet PoE Midspan Injector Category 6 1 Port 802.3at Type B w/ Lightning Protection



PI-1C6-ATB-LP PoE Injector

Voltage Rating DC (Input)	56	VDC
Voltage Rating DC (Output)	56	VDC
Operating Voltage DC	60	VDC
Operating Voltage AC	60	VAC
Power Connector	2.5mm DC Jack	
Wire Type	Type B	

Mechanical Specifications

Size

Height	1.5 in	[38.1 mm]
Width	2.5 in	[63.5 mm]
Length	4.5 in	[114.3 mm]
Weight	0.45 lbs	[204.12 g]
Housing Material	Aluminum	
Grounding Lug	Yes	
Mounting Type	Mounting Feet	

Environmental Specifications

Operating Temperature, Injector	-40 to +70 deg C
Environment Type	Indoor

Transtector Systems specializes in protection of highly sensitive, low voltage equipment through its patented, non-degrading silicon diode technology and custom filters. Our power quality expertise translates into a diverse product offering including AC, DC, and signal applications as well as integrated cabinets, power distribution panels and EMP hardened devices.

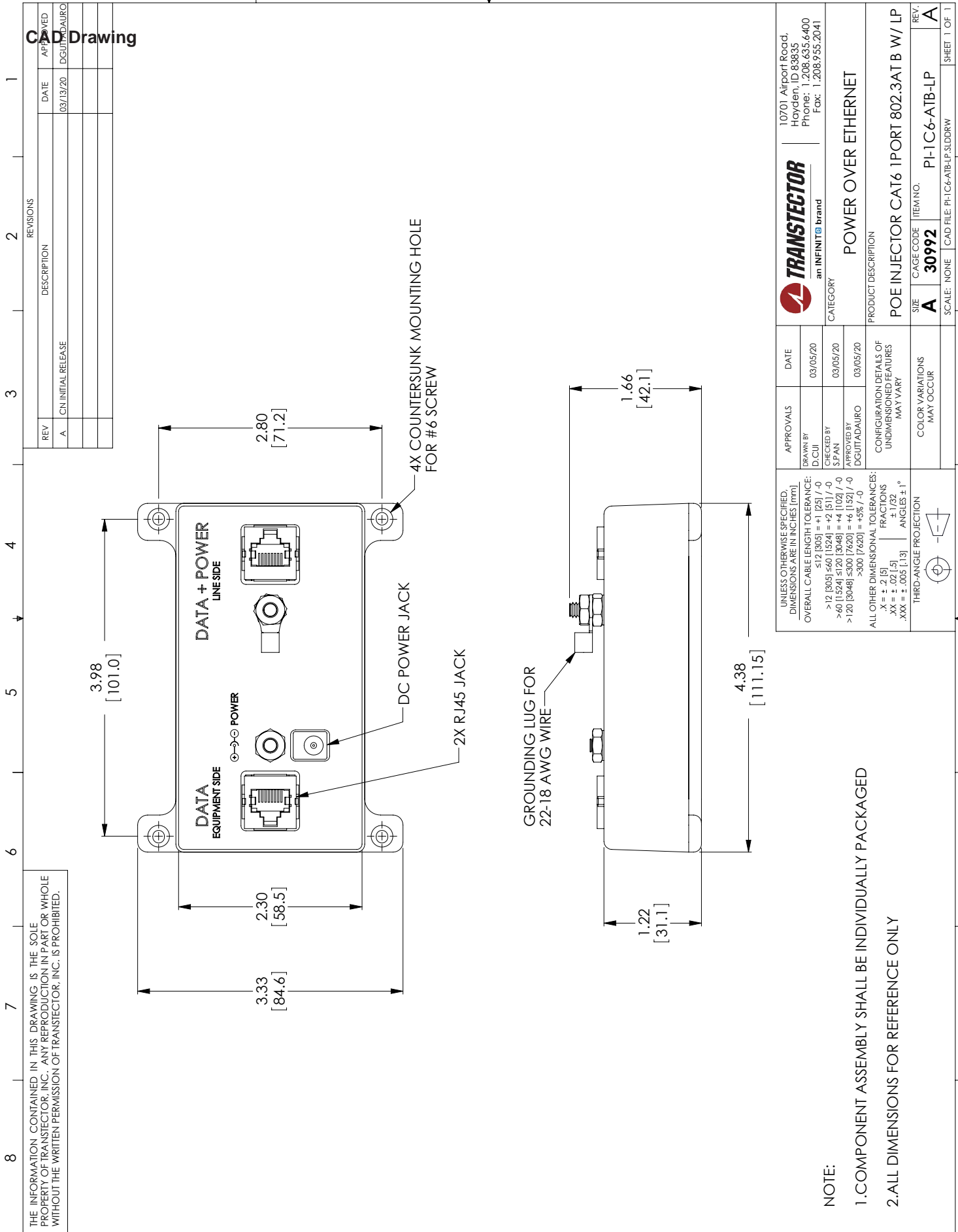
Click the following link (or enter part number in "SEARCH" on website) to obtain additional part information including price, inventory and certifications: [Power Over Ethernet PoE Midspan Injector Category 6 1 Port 802.3at Type B w/ Lightning Protection](https://www.transtector.com/poe-injector-category-6-1-port-rj45-jack-pi-1c6-atb-lp-p.aspx)

URL: <https://www.transtector.com/poe-injector-category-6-1-port-rj45-jack-pi-1c6-atb-lp-p.aspx>

The information contained in this document is accurate to the best of our knowledge and representative of the part described herein. It may be necessary to make modifications to the part and/or the documentation of the part, in order to implement improvements. Transtector reserves the right to make such changes as required. Unless otherwise stated, all specifications are nominal. Transtector does not make any representation or warranty regarding the suitability of the part described herein for any particular purpose, and Transtector does not assume any liability arising out of the use of any part or documentation.

Power Over Ethernet PoE Midspan Injector Category 6, 1 Port 802.3at Type B w/ Lightning Protection

CAD Drawing



NOTE:

- 1. COMPONENT ASSEMBLY SHALL BE INDIVIDUALLY PACKAGED
- 2. ALL DIMENSIONS FOR REFERENCE ONLY