

DC Surge Protector SPD RRPA Indoor DIN-Rail Assy 24,
 48 Vdc, 20 kA SASD, GDT MOV 1x DTA + 4x DRI

RRPA-DTADRI-4

Features

- SASD and MOV/GDT Surge Protection
- Replaceable Suppression Modules
- Dry Contact Remote Annunciation Terminals
- Replaceable Fuses and Surge Modules
- WAGO Cage Clamp Connectors
- Panel Mount DIN-Rail Assembly

Applications

- Railroad Signaling Systems

Description

DC surge protector (also known as SPD or lightning protector) RRPA-DTADRI-4 from Transtector is a DIN-Rail Assy style SPD that utilizes state of the art SASD, MOV, GDT technology to protect critical equipment that operates on a 48 Vdc electrical service. This surge protector provides effective protection against electrical transient surges that are generated both by external lightning events and by internal switching events and supports long-term system reliability by safely shunting high amounts of transient energy while maintaining a very low clamping voltage. Transtector DC surge protectors are available in stock with same day shipping.

Electrical Specifications

Description	Minimum	Typical	Maximum	Units
Service Voltages		24/48		Vdc
Current Rating	5		40	A
Maximum Continuous Operating Voltage (MCOV)				
MCOV DC			34	Vdc

Surge Protection Specification

Description	Minimum	Typical	Maximum	Units
Surge Protection Technology		SASD, GDT, MOV		
Surge Protection Modes		Supply to GND, Supply to Supply		
Response Time			5	ns
8/20 μ s Surge Current			20	kA
VPL 8/20 μ s L-G	110 @ 1000A (DRI-4)		375 @ 3000A (DTA)	Vpk
VPL 10/1000 μ s			48 @ 100A (DRI-4)	Vpk
Nominal Discharge Surge Current (In)		10		kA

Click the following link (or enter part number in "SEARCH" on website) to obtain additional part information including price, inventory and certifications:
[DC Surge Protector SPD RRPA Indoor DIN-Rail Assy 24, 48 Vdc, 20 kA SASD, GDT MOV 1x DTA + 4x DRI RRPA-DTADRI-4](#)

DC Surge Protector SPD RRPA Indoor DIN-Rail Assy 24,
48 Vdc, 20 kA SASD, GDT MOV 1x DTA + 4x DRI

RRPA-DTADRI-4

Mechanical Specifications

Size

Height	14 in	[355.6 mm]
Width	4.73 in	[120.14 mm]
Depth	5.63 in	[143 mm]
Weight	1 lbs	[453.59 g]

Environmental Specifications

Temperature

Operating Range	-40 to +85 deg C
Storage Range	-40 to +85 deg C
Humidity	<95% non-condensing

Installation

Mount Type	DIN-Rail, Wall/Panel
Service Wiring Terminal	
Spring Cage Clamp	#24 to #6 AWG (DTA)
Service Terminal Wire 2	#28 to #12 AWG (DRI)
Status Indication Terminal	
3-Position Screw Terminal	#22 to #12 AWG

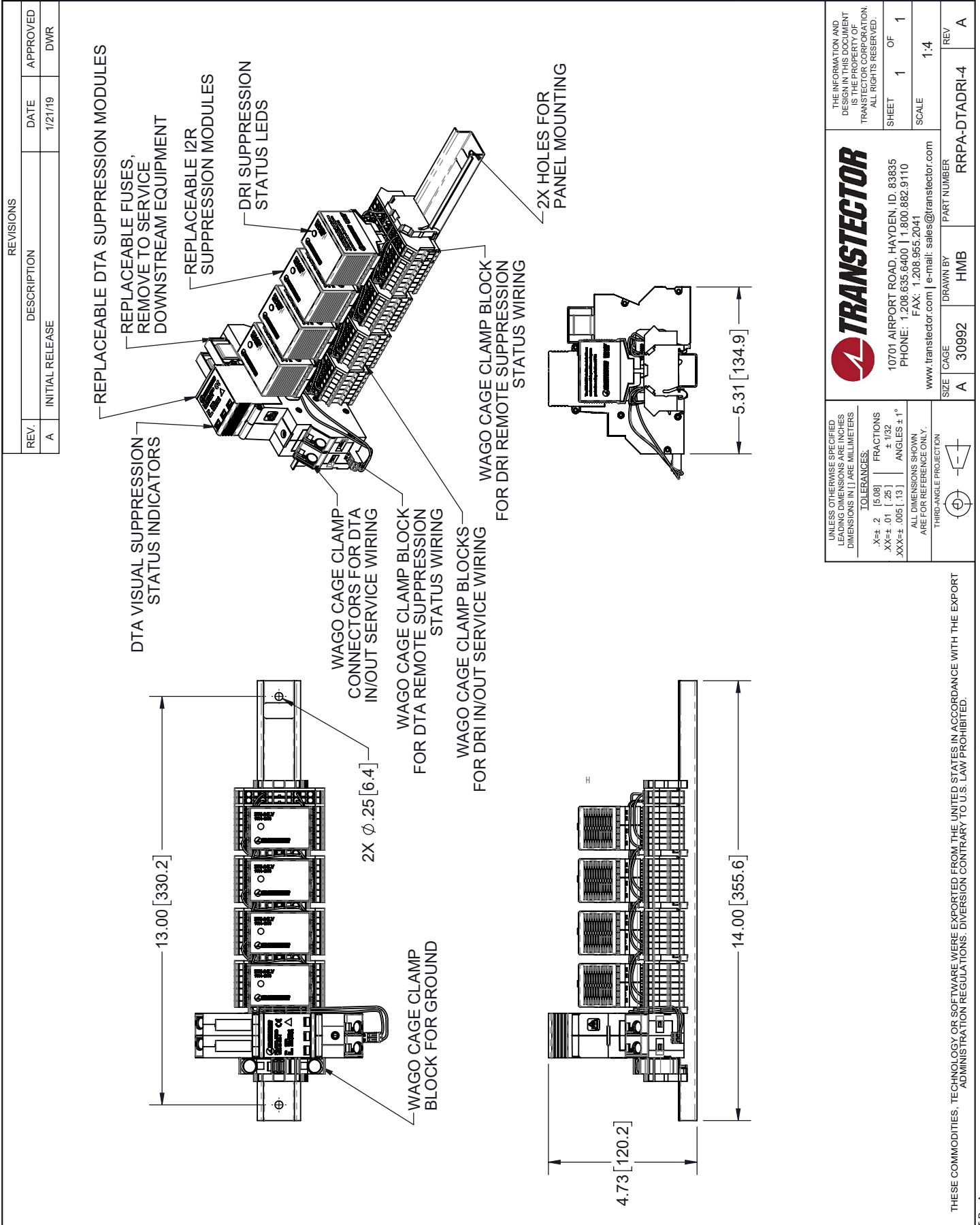
Transtector Systems specializes in protection of highly sensitive, low voltage equipment through its patented, non-degrading silicon diode technology and custom filters. Our power quality expertise translates into a diverse product offering including AC, DC, and signal applications as well as integrated cabinets, power distribution panels and EMP hardened devices.

Click the following link (or enter part number in "SEARCH" on website) to obtain additional part information including price, inventory and certifications: [DC Surge Protector SPD RRPA Indoor DIN-Rail Assy 24, 48 Vdc, 20 kA SASD, GDT MOV 1x DTA + 4x DRI RRPA-DTADRI-4](https://www.transtector.com/dc-surge-protector-spd-rrpa-indoor-din-rrpa-dtadri-4-p.aspx)

URL: <https://www.transtector.com/dc-surge-protector-spd-rrpa-indoor-din-rrpa-dtadri-4-p.aspx>

The information contained in this document is accurate to the best of our knowledge and representative of the part described herein. It may be necessary to make modifications to the part and/or the documentation of the part, in order to implement improvements. Transtector reserves the right to make such changes as required. Unless otherwise stated, all specifications are nominal. Transtector does not make any representation or warranty regarding the suitability of the part described herein for any particular purpose, and Transtector does not assume any liability arising out of the use of any part or documentation.

RRPA-DTADRI-4 CAD Drawing



THE INFORMATION AND DESIGN IN THIS DOCUMENT IS THE PROPERTY OF TRANSTECTOR CORPORATION. ALL RIGHTS RESERVED.		SHEET 1 OF 1	
TRANSTECTOR		SCALE 1:4	
10701 AIRPORT ROAD, HAYDEN, ID. 83835 PHONE: 1.208.635.6400 1.800.882.9110 FAX: 1.208.955.2041 www.transtector.com e-mail: sales@transtector.com		PART NUMBER RRPA-DTADRI-4	
UNLESS OTHERWISE SPECIFIED LEADING DIMENSIONS ARE INCHES DIMENSIONS IN [] ARE MILLIMETERS	TOLERANCES: .X±.2 [5.08] XX±.01 [.25] XXX±.005 [.13]	FRACTIONS ± 1/32 ANGLES ± 1°	REV A
ALL DIMENSIONS SHOWN ARE FOR REFERENCE ONLY. THIRD-ANGLE PROJECTION		SIZE A CAGE 30992 DRAWN BY HMB	REV A

THESE COMMODITIES, TECHNOLOGY OR SOFTWARE WERE EXPORTED FROM THE UNITED STATES IN ACCORDANCE WITH THE EXPORT ADMINISTRATION REGULATIONS. DIVERSION CONTRARY TO U.S. LAW PROHIBITED.