

Electrical Cabinet 120/240 Vac 60A Main 3x 20A + 1x 10A Field
 Configurable Branches, MOV SPD, UL67 Service Entrance Rated

SC-2MMA9-7602-NMN13

60A Main Breaker, No ST, MOV SPD, No Outlet, 3x20A/1x10A



Features

- UL67 Listed
- Suitable for use as service equipment
- 60A Main Breaker
- 3x 20A, 1x 10A Factory Loaded Field-Configurable Branch Breakers
- 8 Open Field-Configurable Branch Breaker Locations
- Integral surge protection protects all downstream equipment
- Versatile Wiring Access
- Pole Mount or Wall Mount (external pole mount kit SC-POLE-KIT sold separately)
- Padlock hasp for physical security

Applications

- Small Cells
- Pico Cells
- Micro Cells
- Macro Cells
- 5G Nodes
- DAS Systems
- Load Expansion

Description

Small cell/5G/DAS electrical power protection cabinet (also known as power distribution box) SC-2MMA9-7602-NMN13 from Transtector, is a UL67 Listed service entrance rated power distribution box that accepts a 120/240 Vac split-phase electrical service, and distributes power from a 60A main breaker to individual loads via 12 field configurable 1 – 25A branch circuit breaker positions. Transtector electrical cabinets are available in stock with same day shipping.

Electrical Specifications

Description	Minimum	Typical	Maximum	Units
Service Voltage		120/240		Vac
Maximum Continuous Operating Voltage (MCOV)				
L - L			350	Vac
L - N			175	Vac
SCCR (Short Circuit Current Rating)			10	kAIC
Main Breaker Rating		60		A
Branch Breaker Rating		3x 20A + 1x 10A		A

Surge Protection Specification

Description	Minimum	Typical	Maximum	Units
Surge Protection Technology		MOV SPD		

Click the following link (or enter part number in "SEARCH" on website) to obtain additional part information including price, inventory and certifications:
[Electrical Cabinet 120/240 Vac 60A Main 3x 20A + 1x 10A Field Configurable Branches, MOV SPD, UL67 Service Entrance Rated SC-2MMA9-7602-NMN13](#)

Electrical Cabinet 120/240 Vac 60A Main 3x 20A + 1x 10A Field
 Configurable Branches, MOV SPD, UL67 Service Entrance Rated



SC-2MMA9-7602-NMN13

60A Main Breaker, No ST, MOV SPD, No Outlet, 3x20A/1x10A

Protection Modes	L-L, L-N		
8/20µs Surge Current	20	75	kA
VPR 8/20µs			
L - L		1,200	Vpk
L - N		600	Vpk
SCCR (Short Circuit Current Rating)	200		kAIC

Mechanical Specifications

Size

Outer Height	14.25in	[361.95 mm]
Outer Width	9.2 in	[233.68 mm]
Outer Depth	6.32 in	[160.53mm]
Enclosure Material and Plating	Steel	

Installation

Mount Type	Wall or Pole Mount
Service Wiring Terminals	Compression Lug #3 AWG to #8 AWG
Branch Wiring Terminals	Compression Lug #4 AWG to #18 AWG
SPD Status Indication Terminals	3-Pin Connector #22 AWG to #16 AWG

Environmental Specifications

Temperature (Operating Range)	-20 to +55 deg C
Temperature (Storage Range)	-40 to +65 deg C
NEMA Rating	3R
Humidity	90% non-condensing

Compliance Certifications

UL Listed	UL67 (Suitable for use as a service equipment)
-----------	--

Click the following link (or enter part number in "SEARCH" on website) to obtain additional part information including price, inventory and certifications:
[Electrical Cabinet 120/240 Vac 60A Main 3x 20A + 1x 10A Field Configurable Branches, MOV SPD, UL67 Service Entrance Rated SC-2MMA9-7602-NMN13](#)

Electrical Cabinet 120/240 Vac 60A Main 3x 20A + 1x 10A Field
Configurable Branches, MOV SPD, UL67 Service Entrance Rated

SC-2MMA9-7602-NMN13
60A Main Breaker, No ST, MOV SPD, No Outlet, 3x20A/1x10A



Transtector Systems specializes in protection of highly sensitive, low voltage equipment through its patented, non-degrading silicon diode technology and custom filters. Our power quality expertise translates into a diverse product offering including AC, DC, and signal applications as well as integrated cabinets, power distribution panels and EMP hardened devices.

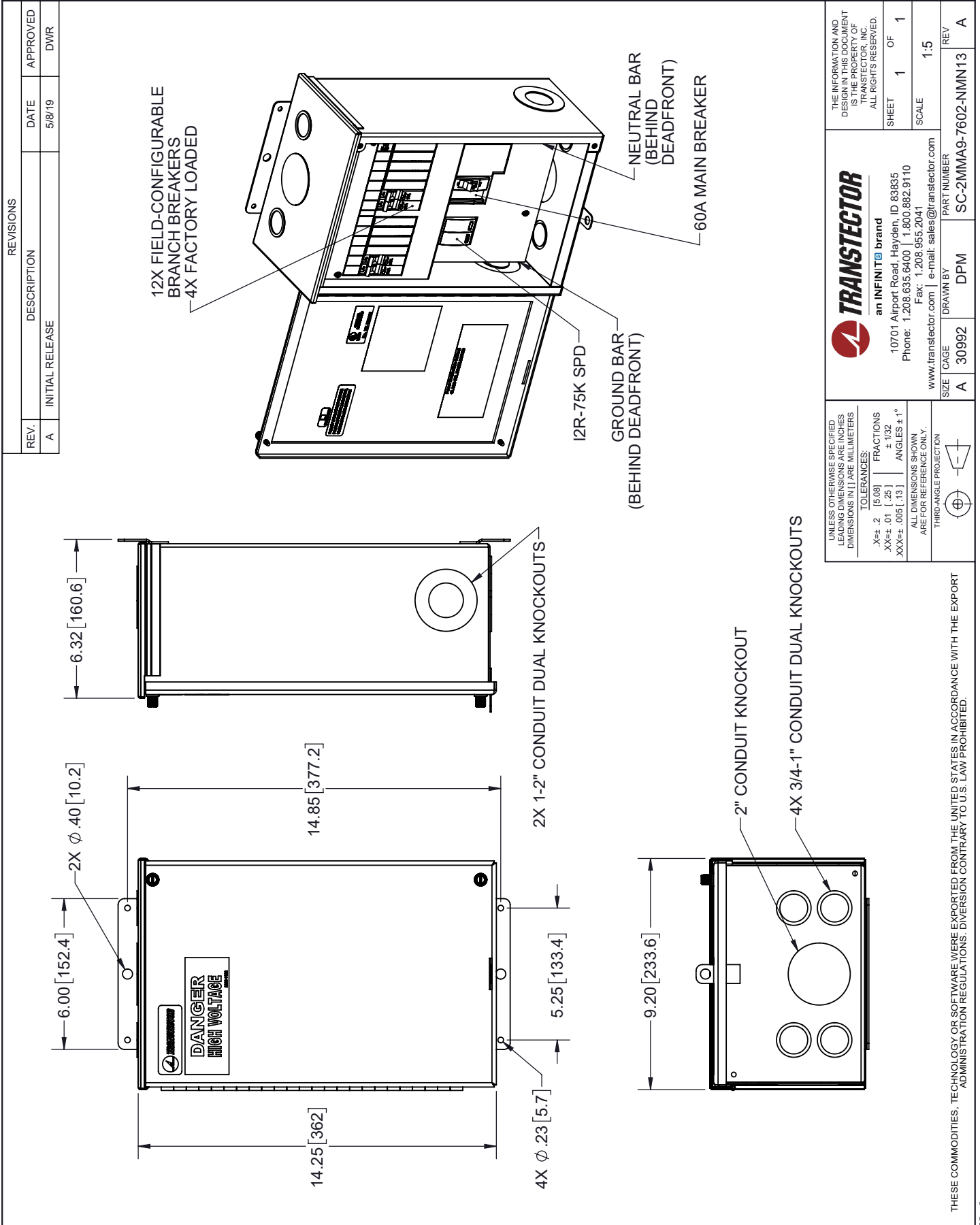
Click the following link (or enter part number in "SEARCH" on website) to obtain additional part information including price, inventory and certifications: [Electrical Cabinet 120/240 Vac 60A Main 3x 20A + 1x 10A Field Configurable Branches, MOV SPD, UL67 Service Entrance Rated SC-2MMA9-7602-NMN13](#)

URL: <https://www.transtector.com/electrical-cabinet-split-phase-120-240-vac-sc-2mma9-7602-nmn13-p.aspx>

The information contained in this document is accurate to the best of our knowledge and representative of the part described herein. It may be necessary to make modifications to the part and/or the documentation of the part, in order to implement improvements. Transtector reserves the right to make such changes as required. Unless otherwise stated, all specifications are nominal. Transtector does not make any representation or warranty regarding the suitability of the part described herein for any particular purpose, and Transtector does not assume any liability arising out of the use of any part or documentation.

Electrical Cabinet 120/240 Vac 60A Main 3x 20A + 1x 10A Field Configurable Branches, MOV SPD, UL67 Service Entrance Rated

SC-2MMA9-7602-NMN13 CAD Drawing



REVISIONS			
REV.	DESCRIPTION	DATE	APPROVED
A	INITIAL RELEASE	5/8/19	DWR

UNLESS OTHERWISE SPECIFIED LEADING DIMENSIONS ARE INCHES DIMENSIONS IN [] ARE MILLIMETERS

TOLERANCES:
 .X±.2 [5.08]
 .XX±.01 [.25]
 XXX±.005 [.13]

FRACTIONS ± 1/32
 ANGLES ± 1°

ALL DIMENSIONS SHOWN ARE FOR REFERENCE ONLY.
 THIRD-ANGLE PROJECTION

THE INFORMATION AND DESIGN IN THIS DOCUMENT IS THE PROPERTY OF TRANSTECTOR, INC. ALL RIGHTS RESERVED.

SHEET 1 OF 1
 SCALE 1:5

TRANSTECTOR
 an INFINITI brand
 10701 Airport Road, Hayden, ID 83835
 Phone: 1.208.635.6400 | 1.800.882.9110
 Fax: 1.208.955.2041
 www.transsector.com | e-mail: sales@transsector.com

SIZE A CAGE 30992 DRAWN BY DPM PART NUMBER SC-2MMA9-7602-NMN13 REV A

THESE COMMODITIES, TECHNOLOGY OR SOFTWARE WERE EXPORTED FROM THE UNITED STATES IN ACCORDANCE WITH THE EXPORT ADMINISTRATION REGULATIONS. DIVERSION CONTRARY TO U.S. LAW PROHIBITED.