

AC SPD Type 2 EMI Filtered 480Vac Delta 100kA/phase

SP100-T2F-4803D-TT SP100 480V Delta



Features

- UL 1449 4th Edition Listed, Type 2 SPDs
- UL 1283 Listed, EMI Filtering up to -45dB 10kHz to 100MHz
- High Capacity 100kA MOV Protection
- No External Fuses Required
- Local and Remote Visual Status Indicators
- NEMA 4X Enclosure Rating, Watertight and Corrosion-Proof

Applications

- Electrical Panelboards
- Communications Base Stations
- Industrial Automation
- Electric Vehicle Charging Stations
- Renewable Energy
- IT & Data Centers
- Automatic Transfer Switches
- Motor Control Centers
- LED Lighting

Description

AC surge protector (also known as SPD or lightning protector) SP100-T2F-4803D-TT from Transtector is a UL1449 4th Ed. panel style SPD that utilizes state of the art MOV technology to protect critical equipment that operates on a 480Vac three-phase delta electrical service. This surge protector provides effective protection against electrical transient surges that are generated both by external lightning events and by internal switching events and supports long-term system reliability by safely shunting high amounts of transient energy while maintaining a very low clamping voltage. Transtector AC surge protectors are available in stock with same day shipping.

Electrical Specifications

Description	Minimum	Typical	Maximum	Units
Service Voltages		480		Vac
Service Type		Three-Phase		
Frequency	50		60	Hz
Maximum Continuous Operating Voltage (MCOV)				
L - L			550	Vac
L - G			550	Vac

Surge Protection Specification

Description	Minimum	Typical	Maximum	Units
Surge Protection Technology		MOV		
Protection Modes		L-L, L-G		

Click the following link (or enter part number in "SEARCH" on website) to obtain additional part information including price, inventory and certifications:
[AC SPD Type 2 EMI Filtered 480Vac Delta 100kA/phase SP100-T2F-4803D-TT](#)

AC SPD Type 2 EMI Filtered 480Vac Delta 100kA/phase



SP100-T2F-4803D-TT SP100 480V Delta

8/20 μ s Surge Current		100	kA
Nominal Discharge Current Rating (In)	20		kA
VPR 8/20 μ s			
L - L		2,000	Vpk
L - G		1,800	Vpk
Response Time		25	ns
SCCR (Short Circuit Current Rating)	200		kAIC

Mechanical Specifications

Size

Height	9.84 in	[249.94 mm]
Width	5.91 in	[150.11 mm]
Depth	4.17 in	[105.92 mm]
Weight	4 lbs	[1.81 kg]
Housing Material and Plating	Polyamide	

Environmental Specifications

Temperature Range (Operational)	-40 to +75 deg C
Temperature Range (Storage)	-40 to +75 deg C
Environmental Protection Rating	NEMA 4
Humidity	95% non-condensing

Installation

Mount Type	Wall Mount
------------	------------

Compliance Certifications

UL Compliant Certifications	Yes UL 1449 4th Ed. UL 1283
-----------------------------	-----------------------------------

Click the following link (or enter part number in "SEARCH" on website) to obtain additional part information including price, inventory and certifications:
[AC SPD Type 2 EMI Filtered 480Vac Delta 100kA/phase SP100-T2F-4803D-TT](#)

AC SPD Type 2 EMI Filtered 480Vac Delta 100kA/phase

SP100-T2F-4803D-TT
SP100 480V Delta



Transtector Systems specializes in protection of highly sensitive, low voltage equipment through its patented, non-degrading silicon diode technology and custom filters. Our power quality expertise translates into a diverse product offering including AC, DC, and signal applications as well as integrated cabinets, power distribution panels and EMP hardened devices.

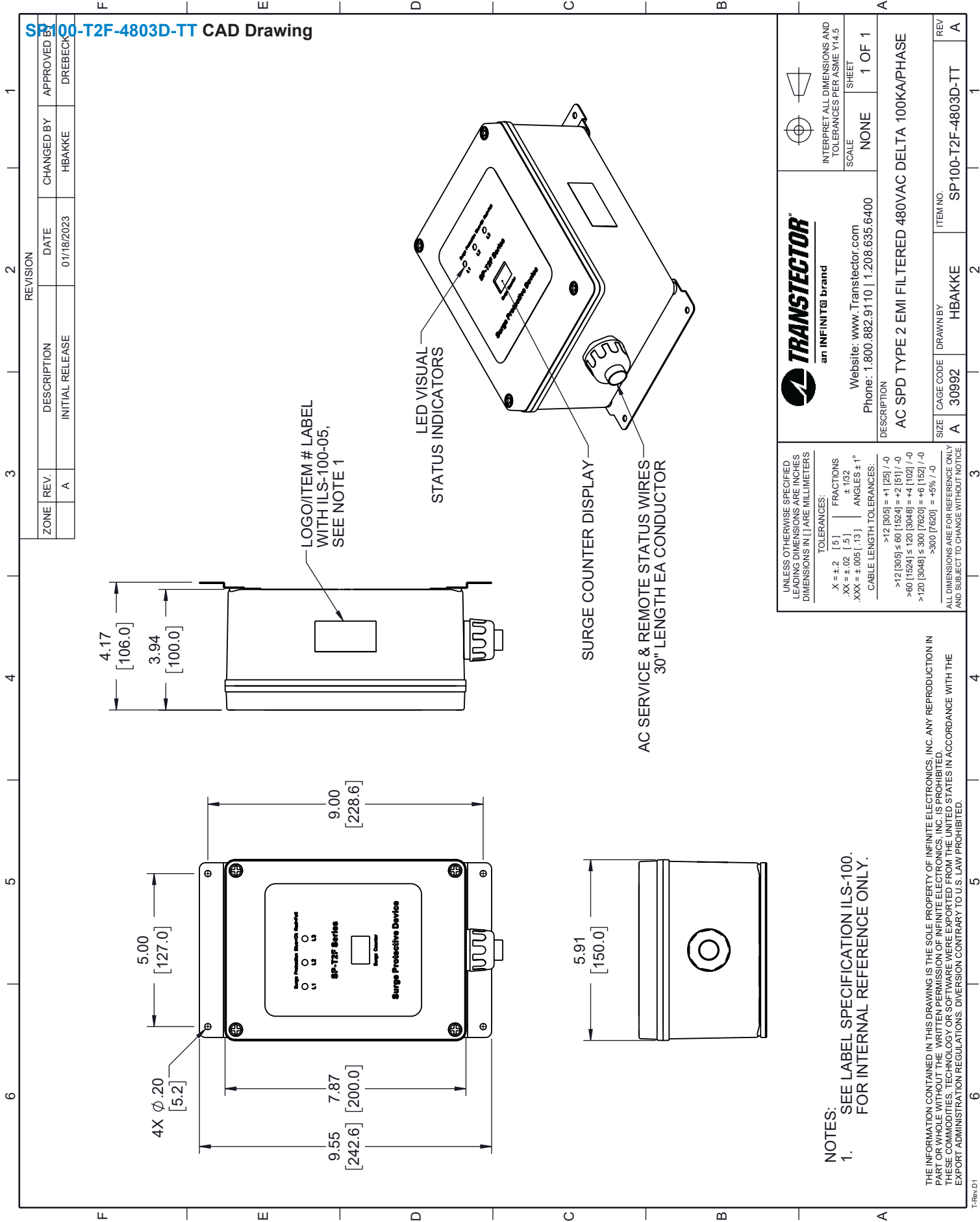
Click the following link (or enter part number in "SEARCH" on website) to obtain additional part information including price, inventory and certifications: [AC SPD Type 2 EMI Filtered 480Vac Delta 100kA/phase SP100-T2F-4803D-TT](https://www.transtector.com/ac-surge-protector-spd-sp-plus-panel-sp100-t2f-4803d-tt)

URL: <https://www.transtector.com/ac-surge-protector-spd-sp-plus-panel-sp100-t2f-4803d-tt-p.aspx>

The information contained in this document is accurate to the best of our knowledge and representative of the part described herein. It may be necessary to make modifications to the part and/or the documentation of the part, in order to implement improvements. Transtector reserves the right to make such changes as required. Unless otherwise stated, all specifications are nominal. Transtector does not make any representation or warranty regarding the suitability of the part described herein for any particular purpose, and Transtector does not assume any liability arising out of the use of any part or documentation.

AC SPD Type 2 EMI Filtered 480Vac Delta 100kA/phase

SP100-T2F-4803D-TT CAD Drawing



ZONE	REV.	DESCRIPTION	DATE	CHANGED BY	APPROVED BY
	A	INITIAL RELEASE	01/18/2023	HBAKKE	DREBECK

REVISION	DATE	CHANGED BY	APPROVED BY
1	01/18/2023	HBAKKE	DREBECK

SIZE	CAGE CODE	DRAWN BY	ITEM NO.
A	30992	HBAKKE	SP100-T2F-4803D-TT

UNLESS OTHERWISE SPECIFIED LEADING DIMENSIONS ARE INCHES DIMENSIONS IN [] ARE MILLIMETERS

TOLERANCES:
 .X = ±.2 [5] FRACTIONS ± 1/32
 .XX = ±.02 [.5] ANGLES ± 1°
 .XXX = ±.005 [.13] CABLE LENGTH TOLERANCES:
 >12 [305] = +1 [25] / -0
 >12 [305] ≤ 60 [1524] = +2 [51] / -0
 >60 [1524] ≤ 120 [3048] = +4 [102] / -0
 >120 [3048] ≤ 300 [7620] = +6 [152] / -0
 >300 [7620] = +5% / -0

ALL DIMENSIONS ARE FOR REFERENCE ONLY AND SUBJECT TO CHANGE WITHOUT NOTICE

TRANSTECTOR
an INFINITE brand

Website: www.Transector.com
 Phone: 1.800.882.9110 | 1.208.635.6400

INTERPRET ALL DIMENSIONS AND TOLERANCES PER ASME Y14.5

SCALE NONE

SHEET 1 OF 1

DESCRIPTION
AC SPD TYPE 2 EMI FILTERED 480VAC DELTA 100KA/PHASE

NOTES:
1. SEE LABEL SPECIFICATION ILS-100. FOR INTERNAL REFERENCE ONLY.

THE INFORMATION CONTAINED IN THIS DRAWING IS THE SOLE PROPERTY OF INFINITE ELECTRONICS, INC. ANY REPRODUCTION IN PART OR WHOLE WITHOUT THE WRITTEN PERMISSION OF INFINITE ELECTRONICS, INC. IS PROHIBITED. THESE COMMODITIES, TECHNOLOGY OR SOFTWARE WERE EXPORTED FROM THE UNITED STATES IN ACCORDANCE WITH THE EXPORT ADMINISTRATION REGULATIONS. DIVERSION CONTRARY TO U.S. LAW PROHIBITED.

T-Rev.01