

AC Surge Protector SPD SP PLUS Brick 347, 600 Vac 3-Phase Wye  
MOV 50 kA, UL 1449 4th Ed. Type 1 and Type 2, CE, RoHS



**SP50-6003Y**  
**LEA SP PLUS 50**

**Features**

- UL1449 4th Ed. Type 1/Type 2
- High Capacity MOV Protection
- Suppression Status LEDs
- Wall Mount
- No External Backup Fuses Required

**Applications**

- Electrical Panelboards
- Industrial Automation
- Communications Base Stations
- IT & Data Centers
- Switchgear
- Motor Control Centers
- Automatic Transfer Switches
- Wastewater Treatment
- Oil & Gas
- LED Lighting
- Schools
- Hospitals

**Description**

AC surge protector (also known as SPD or lightning protector) SP50-6003Y from Transtector is a UL1449 4th Ed. Type 1/Type 2 brick style SPD that utilizes state of the art MOV technology to protect critical equipment that operates on a 347/600 Vac 3-Phase Wye electrical service. This surge protector provides effective protection against electrical transient surges that are generated both by external lightning events and by internal switching events and supports long-term system reliability by safely shunting high amounts of transient energy while maintaining a very low clamping voltage. Transtector AC surge protectors are available in stock with same day shipping.

**Electrical Specifications**

| Description                                 | Minimum | Typical     | Maximum | Units |
|---|---------|-------------|---------|-------|
| Service Voltages                            |         | 347/600     |         | Vac   |
| Service Type                                |         | 3-Phase Wye |         |       |
| Maximum Continuous Operating Voltage (MCOV) |         |             |         |       |
| L - L                                       |         |             | 840     | Vac   |
| L - N                                       |         |             | 420     | Vac   |

**Surge Protection Specification**

| Description                 | Minimum | Typical  | Maximum | Units |
|-----------------------------|---------|----------|---------|-------|
| Surge Protection Technology |         | MOV      |         |       |
| Protection Modes            |         | L-N, L-L |         |       |
| 8/20µs Surge Current        |         |          | 50      | kA    |

Click the following link (or enter part number in "SEARCH" on website) to obtain additional part information including price, inventory and certifications:  
[AC Surge Protector SPD SP PLUS Brick 347, 600 Vac 3-Phase Wye MOV 50 kA, UL 1449 4th Ed. Type 1 and Type 2, CE, RoHS SP50-6003Y](#)

AC Surge Protector SPD SP PLUS Brick 347, 600 Vac 3-Phase Wye  
 MOV 50 kA, UL 1449 4th Ed. Type 1 and Type 2, CE, RoHS



## SP50-6003Y LEA SP PLUS 50

|                                       |       |      |
|---------------------------------------|-------|------|
| Nominal Discharge Current Rating (In) | 10    | kA   |
| VPR 8/20 $\mu$ s                      |       |      |
| L - L                                 | 2,500 | Vpk  |
| L - N                                 | 1,500 | Vpk  |
| Response Time                         | 25    | ns   |
| SCCR (Short Circuit Current Rating)   | 200   | kAIC |

### Mechanical Specifications

#### Size

|                              |                   |             |
|------------------------------|-------------------|-------------|
| Height                       | 2.45 in           | [62.23 mm]  |
| Width                        | 4.45 in           | [113.03 mm] |
| Depth                        | 5.71 in           | [145.03 mm] |
| Weight                       | 1.3 lbs           | [589.67 g]  |
| Housing Material and Plating | Plastic Enclosure |             |

### Environmental Specifications

|                                 |                    |
|---------------------------------|--------------------|
| Temperature Range (Operational) | -40 to +85 deg C   |
| Environmental Protection Rating | NEMA 4X            |
| Humidity                        | 90% non-condensing |

### Installation

|            |       |
|------------|-------|
| Mount Type | Panel |
|------------|-------|

### Compliance Certifications

|                |                                   |
|----------------|-----------------------------------|
| RoHS Compliant | Yes                               |
| CE Compliant   | Yes                               |
| UL Compliant   | Yes                               |
| Certifications | UL 1449 4th Ed. Type 1 and Type 2 |

Click the following link (or enter part number in "SEARCH" on website) to obtain additional part information including price, inventory and certifications:  
[AC Surge Protector SPD SP PLUS Brick 347, 600 Vac 3-Phase Wye MOV 50 kA, UL 1449 4th Ed. Type 1 and Type 2, CE, RoHS SP50-6003Y](#)

AC Surge Protector SPD SP PLUS Brick 347, 600 Vac 3-Phase Wye  
MOV 50 kA, UL 1449 4th Ed. Type 1 and Type 2, CE, RoHS

**SP50-6003Y**  
**LEA SP PLUS 50**



Transtector Systems specializes in protection of highly sensitive, low voltage equipment through its patented, non-degrading silicon diode technology and custom filters. Our power quality expertise translates into a diverse product offering including AC, DC, and signal applications as well as integrated cabinets, power distribution panels and EMP hardened devices.

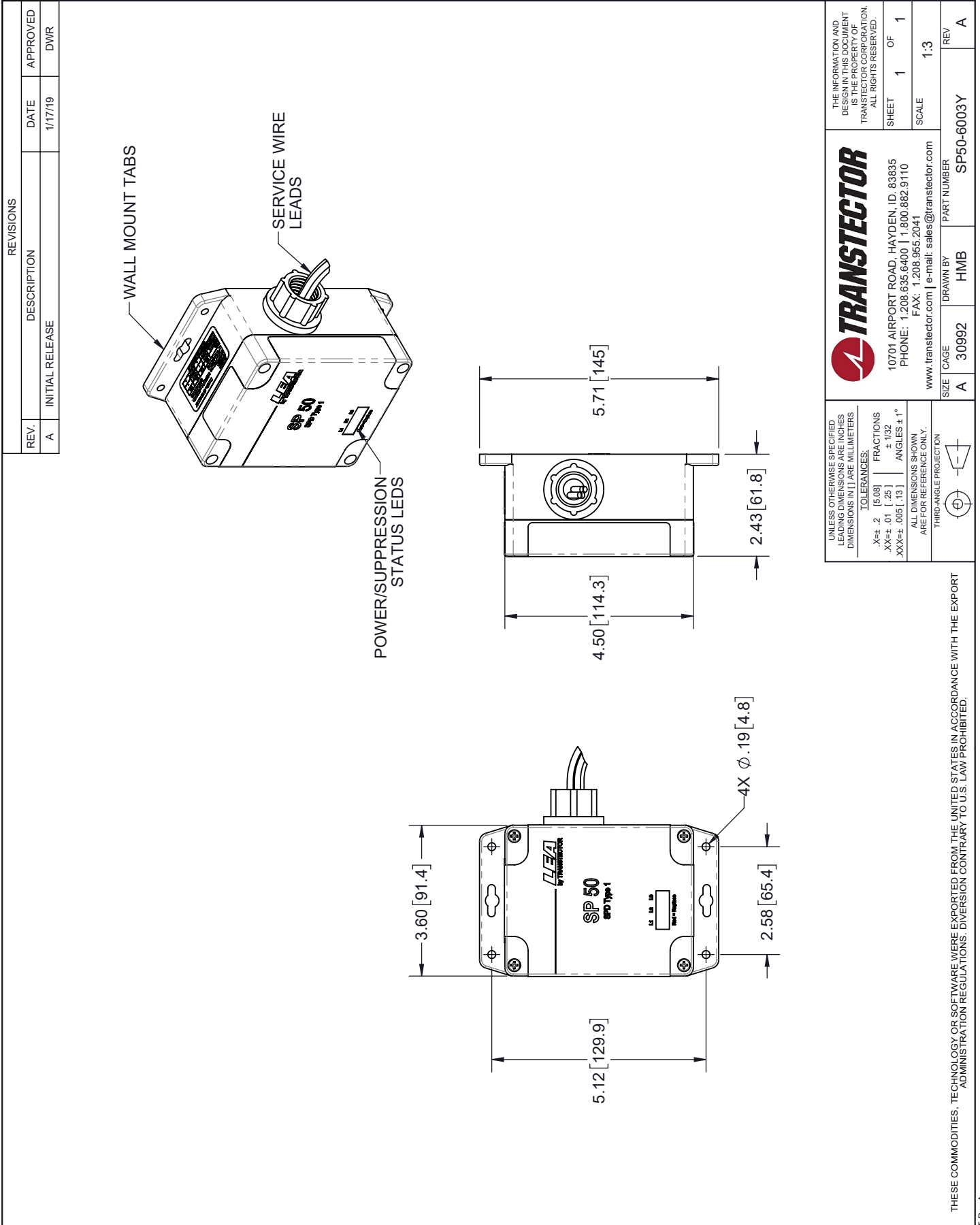
Click the following link (or enter part number in "SEARCH" on website) to obtain additional part information including price, inventory and certifications: [AC Surge Protector SPD SP PLUS Brick 347, 600 Vac 3-Phase Wye MOV 50 kA, UL 1449 4th Ed. Type 1 and Type 2, CE, RoHS SP50-6003Y](#)

URL: <https://www.transtector.com/ac-surge-protector-spd-sp-plus-brick-sp50-6003y-p.aspx>

The information contained in this document is accurate to the best of our knowledge and representative of the part described herein. It may be necessary to make modifications to the part and/or the documentation of the part, in order to implement improvements. Transtector reserves the right to make such changes as required. Unless otherwise stated, all specifications are nominal. Transtector does not make any representation or warranty regarding the suitability of the part described herein for any particular purpose, and Transtector does not assume any liability arising out of the use of any part or documentation.

AC Surge Protector SPD SP PLUS Brick 347, 600 Vac 3-Phase Wye MOV  
 50 kA, UL 1449 4th Ed. Type 1 and Type 2, CE, RoHS

**SP50-6003Y CAD Drawing**



|   |              |  |       |
|---|--------------|--|-------|
|   |              | THE INFORMATION AND DESIGN IN THIS DOCUMENT IS THE PROPERTY OF TRANSTECTOR CORPORATION. ALL RIGHTS RESERVED. |       |
| 10701 AIRPORT ROAD, HAYDEN, ID. 83835<br>PHONE: 1.208.635.6400   1.800.882.9110<br>FAX: 1.208.955.2041<br>www.transtector.com   e-mail: sales@transtector.com |              | SHEET 1 OF 1<br>SCALE 1:3  | REV A |
| SIZE A<br>CAGE 30992  | DRAWN BY HMB | PART NUMBER SP50-6003Y   | REV A |
| UNLESS OTHERWISE SPECIFIED LEADING DIMENSIONS ARE INCHES DIMENSIONS IN [ ] ARE MILLIMETERS  |              | TOLERANCES:<br>.X±.2 [5.08] FRACTIONS<br>.XX±.01 [.25] ± 1/32<br>XXX±.005 [.13] ANGLES ± 1°                  |       |
| ALL DIMENSIONS SHOWN ARE FOR REFERENCE ONLY.  |              | THIRD-ANGLE PROJECTION   |       |

THESE COMMODITIES, TECHNOLOGY OR SOFTWARE WERE EXPORTED FROM THE UNITED STATES IN ACCORDANCE WITH THE EXPORT ADMINISTRATION REGULATIONS. DIVERSION CONTRARY TO U.S. LAW PROHIBITED.

T-Rev A