

14x12x06 Polycarbonate Weatherproof Outdoor IP24 NEMA 3R Enclosure, 120 VAC Modified Base DIN Rail Mount Vented Lid Black

**TEBPC141206-00VDR**



**Features**

- High-Impact, UV Resistant Polycarbonate (Black)
- Stainless steel latches with padlock eye
- NEMA Type 3R / IP24 rated
- Fully gasketed vented lid & user installed wall mounting brackets
- Installed mounting rails for use with DIN3 rails

**Applications**

- Remote Wireless LAN WiFi equipment installations
- Indoor and outdoor installations
- Rapid Deployment Installations
- Corrosive environments & hotspot applications
- Protection of equipment from theft or damage

**Description**

The box is a rugged weatherproof enclosure that is ideal for both indoor and outdoor applications. Constructed from High-Impact, UV Resistant Polycarbonate material that provides superior durability to impacts and ease of modification while maintaining minimum weight. It is well suited for high temperature or corrosive environments. The lid includes two vents with installed rain guards and filters. The included wall mount brackets come uninstalled and bagged with their hardware inside of the enclosure. Once the brackets are installed the enclosure can be mounted directly to any flat wall surface provided proper screws are used into secure studs. The brackets, once installed, also allow you to use our TEF-PMT pole mount kits. The lid features a non-metallic hinge system that allows for quick removal & can be reattached just as quickly without the need for any tools. The enclosure comes with a pair of stainless-steel latches with padlock eyes allowing you to secure the enclosure from tampering. The enclosure comes in black.

**Mounting Rails**

The aluminum mounting rails installed within the TEBPC141206-00VDR provides provisions to mount DIN3 Rails for installing a number of off-the-shelf DIN Modules and systems. The flexibility of DIN rail mounting system and the large selection of modules available offer any number of application solutions indoors and out, even in rainy environments. The NEMA Type 3R/IP24 provides a vented, weatherproof environment, to safely house the control, routing and power systems being designed with the DIN Modules. The DIN Rails can be adapted to hold other systems and components to accommodate their placement in the enclosure. The enclosure features holes for two N-Bulkhead connectors or Lightning Protectors, a grounding lug, and a cable conduit connector to accept power or system feeds into the enclosure.

The TEF-PMT series of pole mounting kits allow the populated enclosure to be securely mounted to a variety of different size poles.

Compatible versions include TEF-PMT13, TEF-PMT16, TEF-PMT28, TEF-PMT29, TEF-PMT30, & TEF-PMT33

**Size**

Outer Height	14.6 in	[370.84 mm]
Outer Width	12.6 in	[320.04 mm]
Outer Depth	7.4 in	[187.96 mm]
Inner Height	13.7 in	[347.98 mm]
Inner Width	11.7 in	[297.18 mm]
Inner Depth	5.9 in	[149.86 mm]
Weight	8.4 lbs	[3.81 kg]
Enclosure Material	Polycarbonate	

Click the following link (or enter part number in "SEARCH" on website) to obtain additional part information including price, inventory and certifications: [14x12x06 Polycarbonate Weatherproof Outdoor IP24 NEMA 3R Enclosure, 120 VAC Modified Base DIN Rail Mount Vented Lid Black TEBPC141206-00VDR](#)

14x12x06 Polycarbonate Weatherproof Outdoor IP24 NEMA 3R  
Enclosure, 120 VAC Modified Base DIN Rail Mount Vented Lid Black

**TEBPC141206-00VDR**



### Environmental Specifications

Temperature Rating	-40° to 265° F [-40° to 129° C]
NEMA Rating	3R
Ingress Protection (IP) Rating	IP24

### Compliance Certifications

UL Listed	No
-----------	----

Transtector Systems specializes in protection of highly sensitive, low voltage equipment through its patented, non-degrading silicon diode technology and custom filters. Our power quality expertise translates into a diverse product offering including AC, DC, and signal applications as well as integrated cabinets, power distribution panels and EMP hardened devices.

Click the following link (or enter part number in "SEARCH" on website) to obtain additional part information including price, inventory and certifications: [14x12x06 Polycarbonate Weatherproof Outdoor IP24 NEMA 3R Enclosure, 120 VAC Modified Base DIN Rail Mount Vented Lid Black TEBPC141206-00VDR](#)

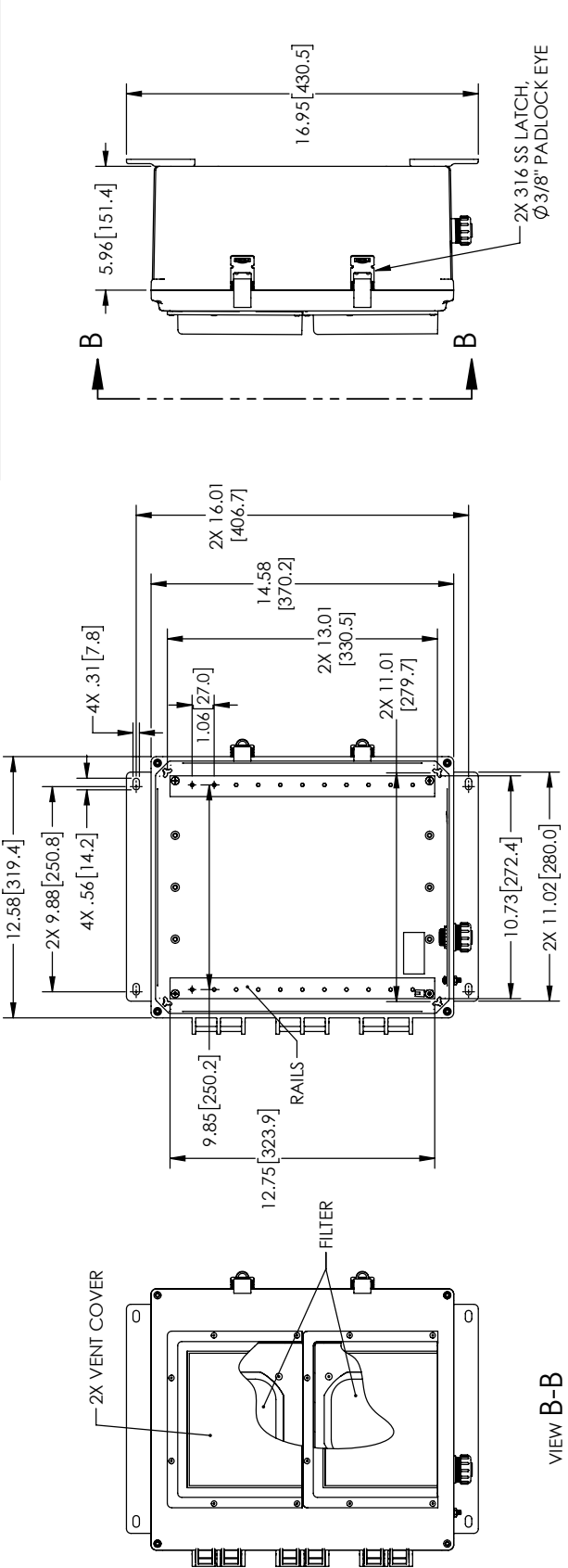
URL: <https://www.transtector.com/14x12x06-polycarbonate-weatherproof-outdoor-ip24-nema-3r-tebpc141206-00vdr-p.aspx>

The information contained in this document is accurate to the best of our knowledge and representative of the part described herein. It may be necessary to make modifications to the part and/or the documentation of the part, in order to implement improvements. Transtector reserves the right to make such changes as required. Unless otherwise stated, all specifications are nominal. Transtector does not make any representation or warranty regarding the suitability of the part described herein for any particular purpose, and Transtector does not assume any liability arising out of the use of any part or documentation.

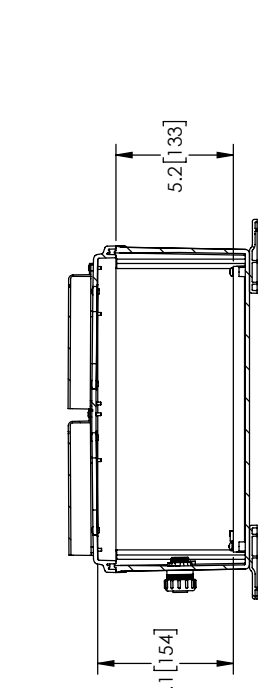
14x12x06 Polycarbonate Weatherproof Outdoor IP24 NEMA 3R Enclosure,  
120 VAC Modified Base DIN Rail Mount Vented Lid Black

**TEBPC141206-00VDR CAD Drawing**

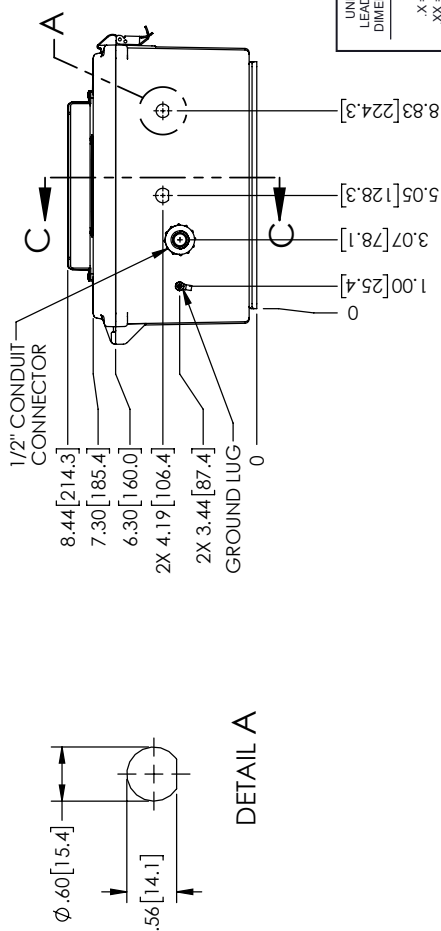
REVISIONS			
REV.	DESCRIPTION	DATE	APPROVED
A	INITIAL RELEASE	01/27/2020	MMARTINEZ



LID NOT SHOWN IN THIS VIEW FOR CLARITY



SECTION C-C



**TRANSTECTOR**  
an INFINITE brand

10701 Airport Road, Hayden, ID 83835  
Phone: 1.208.635.6400 | 1.800.882.9110  
Fax: 1.208.955.2041  
Website: www.transvector.com  
E-mail: sales@transvector.com

THIRD-ANGLE PROJECTION

THE INFORMATION AND DRAWING IS THE PROPERTY OF TRANSTECTOR, INC. ALL RIGHTS RESERVED.

SHEET 1 OF 1

SCALE N/A

REV	REV
A	A
CASE CODE	ITEM NO.
30992	TEBPC141206-00VDR
DRAWN BY	
DZINN	

UNLESS OTHERWISE SPECIFIED LEADING DIMENSIONS ARE IN INCHES DIMENSIONS IN [ ] ARE MILLIMETERS

TOLERANCES:

X = ±.2	[5.08]	FRACTIONS	± 1/32
.XX = ±.02	[.51]	ANGLES	± 1°
.XXX = ±.005	[.13]	CABLE LENGTH (L)	TOLERANCES:
		L ≤ 12 [305]	± 1 [25] / -0
		12 [305] < L ≤ 60 [1524]	± 2 [51] / -0
		60 [1524] < L ≤ 120 [3048]	± 4 [102] / -0
		120 [3048] < L ≤ 300 [7620]	± 6 [152] / -0
		300 [7620] < L	± 5% / -0

ALL DIMENSIONS SHOWN ARE FOR REFERENCE ONLY.

THESE COMMODITIES, TECHNOLOGY OR SOFTWARE WERE EXPORTED FROM THE UNITED STATES IN ACCORDANCE WITH THE EXPORT ADMINISTRATION REGULATIONS. DIVERSION CONTRARY TO U.S. LAW PROHIBITED.