

12x10x06 UL<sup>®</sup> Listed Polycarbonate Weatherproof  
Outdoor IP66 NEMA 4X Enclosure, Dark Gray

**TEPC121006**



**Features**

- UL<sup>®</sup> Listed High-Impact, UV Resistant Polycarbonate (Dark Gray)
- Stainless steel latches with padlock eye
- NEMA Type 4X / IP66\* rated (includes (4x) optional lid corner screws\*\*)
- Fully gasketed lid & user installed wall mounting brackets

**Applications**

- Remote Wireless LAN WiFi equipment installations
- Indoor and outdoor installations
- Rapid Deployment Installations
- Corrosive environments & hotspot applications
- Protection of equipment from theft or damage

**Description**

The box is a rugged weatherproof enclosure that is ideal for both indoor and outdoor applications. Constructed from High-Impact, UV Resistant Polycarbonate material that provides superior durability to impacts and ease of modification while maintaining minimum weight. It is well suited for high temperature or corrosive environments. The included wall mount brackets come uninstalled and bagged with their hardware inside of the enclosure. Once the brackets are installed the enclosure can be mounted directly to any flat wall surface provided proper screws are used into secure studs. The brackets, once installed, also allow you to use our HGX-PMT pole mount kits. The lid features a non-metallic hinge system that allows for quick removal & can be reattached just as quickly without the need for any tools. The enclosure comes with a pair of stainless-steel latches with padlock eyes allowing you to secure the enclosure from tampering. The enclosure comes in a Dark Gray (Pantone 422C)

The TEF-PMT series of pole mounting kits allow the populated enclosure to be securely mounted to a variety of different size poles.

Compatible versions include TEF-PMT13, TEF-PMT16, TEF-PMT28, TEF-PMT29, TEF-PMT30 & TEF-PMT33

\*Note: Any holes or openings you might introduce must be properly sealed to maintain NEMA Type 4X / IP66 rating

\*\*Note: If all four of the optional lid screws are installed the enclosure can achieve NEMA 6P / IP68 however any holes or openings you may have added would have to be properly sealed with an IP68 rated plug, gland or coupler.

**Size**

Outer Height	12.5 in	[317.5 mm]
Outer Width	10.5 in	[266.7 mm]
Outer Depth	6.85 in	[173.99 mm]
Inner Height	11.01 in	[279.65 mm]
Inner Width	9.01 in	[228.85 mm]
Inner Depth	5.5 in	[139.7 mm]
Weight	5.5 lbs	[2.49 kg]
Enclosure Material	Polycarbonate	

Click the following link (or enter part number in "SEARCH" on website) to obtain additional part information including price, inventory and certifications:  
[12x10x06 UL<sup>®</sup> Listed Polycarbonate Weatherproof Outdoor IP66 NEMA 4X Enclosure, Dark Gray TEPC121006](#)

12x10x06 UL® Listed Polycarbonate Weatherproof  
Outdoor IP66 NEMA 4X Enclosure, Dark Gray

**TEPC121006**



---

### Environmental Specifications

Temperature Rating	-40° to 265° F [-40° to 129° C]
NEMA Rating	4X
Ingress Protection (IP) Rating	IP66

### Compliance Certifications

UL Listed	E514156
-----------	---------

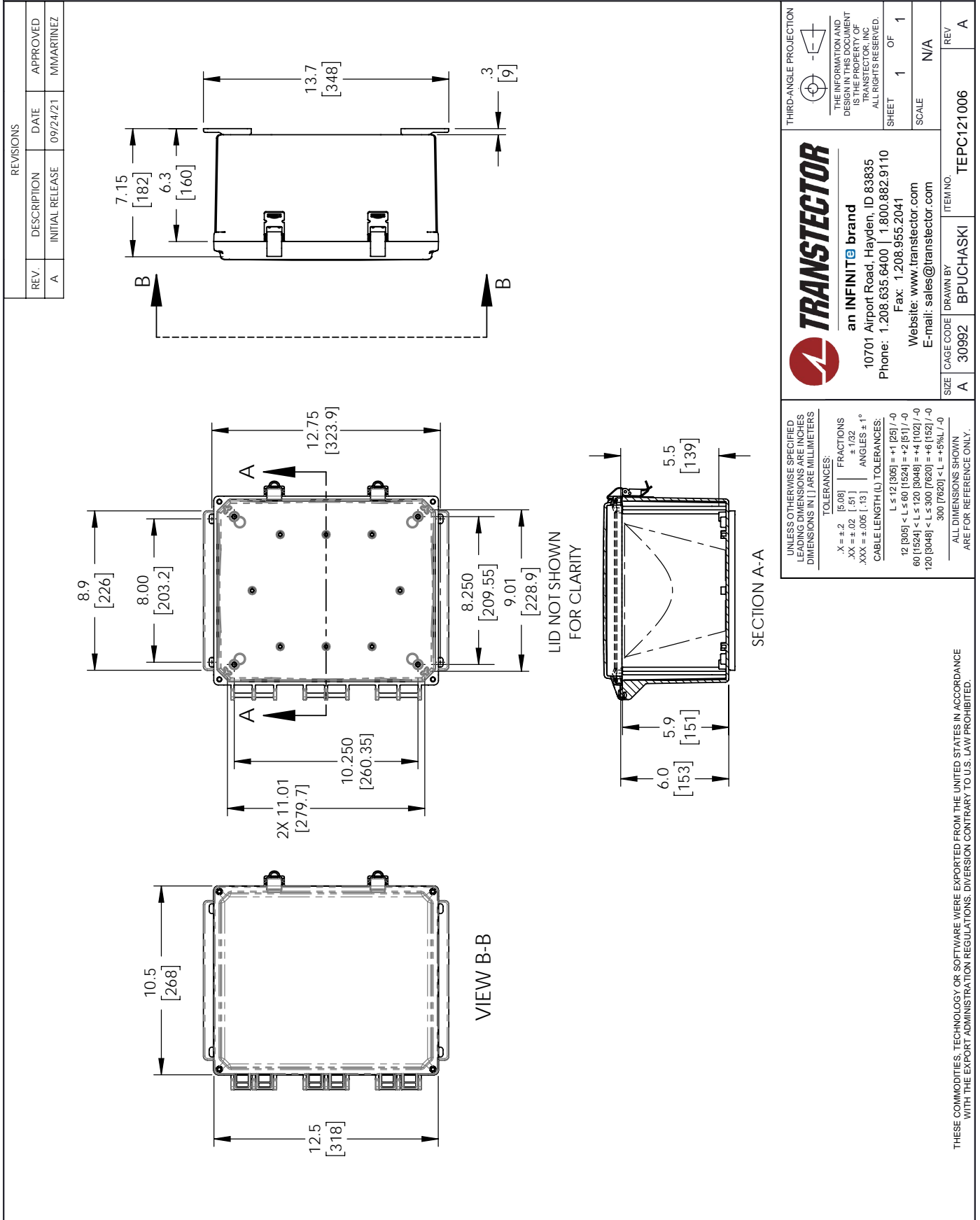
Transtector Systems specializes in protection of highly sensitive, low voltage equipment through its patented, non-degrading silicon diode technology and custom filters. Our power quality expertise translates into a diverse product offering including AC, DC, and signal applications as well as integrated cabinets, power distribution panels and EMP hardened devices.

Click the following link (or enter part number in "SEARCH" on website) to obtain additional part information including price, inventory and certifications: [12x10x06 UL® Listed Polycarbonate Weatherproof Outdoor IP66 NEMA 4X Enclosure, Dark Gray TEPC121006](https://www.transtector.com/12x10x06-ul-listed-polycarbonate-weatherproof-outdoor-ip66-nema-4x-enclosure-dark-gray-tepc121006)

URL: <https://www.transtector.com/12x10x06-ul-listed-polycarbonate-weatherproof-outdoor-ip66-tepc121006-p.aspx>

The information contained in this document is accurate to the best of our knowledge and representative of the part described herein. It may be necessary to make modifications to the part and/or the documentation of the part, in order to implement improvements. Transtector reserves the right to make such changes as required. Unless otherwise stated, all specifications are nominal. Transtector does not make any representation or warranty regarding the suitability of the part described herein for any particular purpose, and Transtector does not assume any liability arising out of the use of any part or documentation.

TEPC121006 CAD Drawing



REVISIONS			
REV.	DESCRIPTION	DATE	APPROVED
A	INITIAL RELEASE	09/24/21	MMARTINEZ

THIRD-ANGLE PROJECTION	THE INFORMATION AND DRAWING IS THE PROPERTY OF TRANSTECTOR, INC. ALL RIGHTS RESERVED.
SHEET 1 OF 1	SCALE N/A

**TRANSTECTOR**  
 an INFINITE brand  
 10701 Airport Road, Hayden, ID 83835  
 Phone: 1.208.635.6400 | 1.800.882.9110  
 Fax: 1.208.955.2041  
 Website: www.transvector.com  
 E-mail: sales@transvector.com

ITEM NO. TEPC121006  
 DRAWN BY BPUCHASKI  
 CASE CODE A 30992

UNLESS OTHERWISE SPECIFIED LEADING DIMENSIONS ARE INCHES DIMENSIONS IN [ ] ARE MILLIMETERS

TOLERANCES:

.X = ±.2	[.08]	FRACTIONS	± 1/32
.XX = ±.02	[.51]	ANGLES	± 1°
.XXX = ±.005	[.13]	CABLE LENGTH (L)	TOLERANCES:
L ≤ 12 [305]			±.1 [25] / -0
12 [305] < L ≤ 60 [1524]			±.2 [51] / -0
60 [1524] < L ≤ 120 [3048]			±.4 [102] / -0
120 [3048] < L ≤ 300 [7620]			±.6 [152] / -0
300 [7620] < L			±.5% / -0

ALL DIMENSIONS SHOWN ARE FOR REFERENCE ONLY.

THESE COMMODITIES, TECHNOLOGY OR SOFTWARE WERE EXPORTED FROM THE UNITED STATES IN ACCORDANCE WITH THE EXPORT ADMINISTRATION REGULATIONS. DIVERSION CONTRARY TO U.S. LAW PROHIBITED.

T-Rev.D