

14x12x06 Polycarbonate Weatherproof Outdoor IP24 NEMA 3R Enclosure,
120 VAC MNT PLT, Mechanical Thermostat Heat & Fan DKG Y

TEPC141206-1HF



Features

- High-Impact, UV Resistant Polycarbonate (Dark Gray)
- Stainless steel latches with padlock eye
- NEMA Type 3R / IP24 rated
- Fully gasketed vented lid with filters & user installed wall mounting brackets
- Features aluminum mounting plate with surge protected duplex 120 VAC outlets & thermostat controlled heating & cooling system

Applications

- Remote Wireless LAN WiFi equipment installations
- Indoor and outdoor installations
- Rapid Deployment Installations
- Corrosive environments & hotspot applications
- Protection of equipment from theft or damage

Description

The box is a rugged weatherproof enclosure that is ideal for both indoor and outdoor applications. Constructed from High-Impact, UV Resistant Polycarbonate material that provides superior durability to impacts and ease of modification while maintaining minimum weight. It is well suited for high temperature or corrosive environments. The lid includes two vents with installed rain guards and filters. The included wall mount brackets come uninstalled and bagged with their hardware inside of the enclosure. Once the brackets are installed the enclosure can be mounted directly to any flat wall surface provided proper screws are used into secure studs. The brackets, once installed, also allow you to use our TEF-PMT pole mount kits. The lid features a non-metallic hinge system that allows for quick removal & can be reattached just as quickly without the need for any tools. The enclosure comes with a pair of stainless-steel latches with padlock eyes allowing you to secure the enclosure from tampering. The enclosure comes in a Dark Gray (Pantone 422C)

Mounting Plate

The aluminum mounting plate included with the TEPC141206-1HF features standard surge protected duplex 120 VAC outlets and a terminal block for easy hook up to externally provided line power. The enclosure also features holes for two N-Bulkhead Lightning Protectors or Connectors, a grounding lug and cable conduit connector.

Heating & Cooling

To help ensure trouble-free operation of electronic equipment, proper operating temperatures inside an enclosure need to be controlled. With the built-in heater and cooling fan, internal temperatures can be better maintained. This model is ideal in Hot and/or Cold environments.

For Heating the TEPC141206-1HF includes a thermostat-controlled 200W heater. The heater turns on when the internal temperature drops to 40° F (4° C) ±7° and turns off at 60° F (15° C) ±5°. The heater does not require the use of any of the AC outlets, leaving them all available for your equipment. No extra room for the heater is required since it is mounted underneath the plate.

For Cooling the TEPC141206-1HF model includes a thermostat-controlled 16.4W fan. The high airflow, low noise fan used allows warm air to be actively pushed out while the lower vent passively pulls in outside air into the enclosure. Filters for both ports prevent foreign objects or debris from entering the enclosure. The fan turns on when the internal temperature rises to 120° F (49° C) ±5° and turns off at 90° F (32° C) ±10°. Like the heater, the cooling fan does not require the use of any of the AC outlets, leaving them all available for your equipment.

Click the following link (or enter part number in "SEARCH" on website) to obtain additional part information including price, inventory and certifications: [14x12x06 Polycarbonate Weatherproof Outdoor IP24 NEMA 3R Enclosure, 120 VAC MNT PLT, Mechanical Thermostat Heat & Fan DKG Y TEPC141206-1HF](#)

14x12x06 Polycarbonate Weatherproof Outdoor IP24 NEMA 3R Enclosure,
120 VAC MNT PLT, Mechanical Thermostat Heat & Fan DKGY

TEPC141206-1HF



The TEF-PMT series of pole mounting kits allow the populated enclosure to be securely mounted to a variety of different size poles.

Compatible versions include TEF-PMT13, TEF-PMT16, TEF-PMT28, TEF-PMT29, TEF-PMT30, & TEF-PMT33

Size

Outer Height	14.6 in	[370.84 mm]
Outer Width	12.6 in	[320.04 mm]
Outer Depth	7.4 in	[187.96 mm]
Inner Height	13.7 in	[347.98 mm]
Inner Width	11.7 in	[297.18 mm]
Inner Depth	5.9 in	[149.86 mm]
Weight	13.3 lbs	[6.03 kg]
Enclosure Material	Polycarbonate	

Environmental Specifications

Temperature Rating	-40° to 265° F [-40° to 129° C]
NEMA Rating	3R
Ingress Protection (IP) Rating	IP24

Compliance Certifications

UL Listed	No
-----------	----

Transtector Systems specializes in protection of highly sensitive, low voltage equipment through its patented, non-degrading silicon diode technology and custom filters. Our power quality expertise translates into a diverse product offering including AC, DC, and signal applications as well as integrated cabinets, power distribution panels and EMP hardened devices.

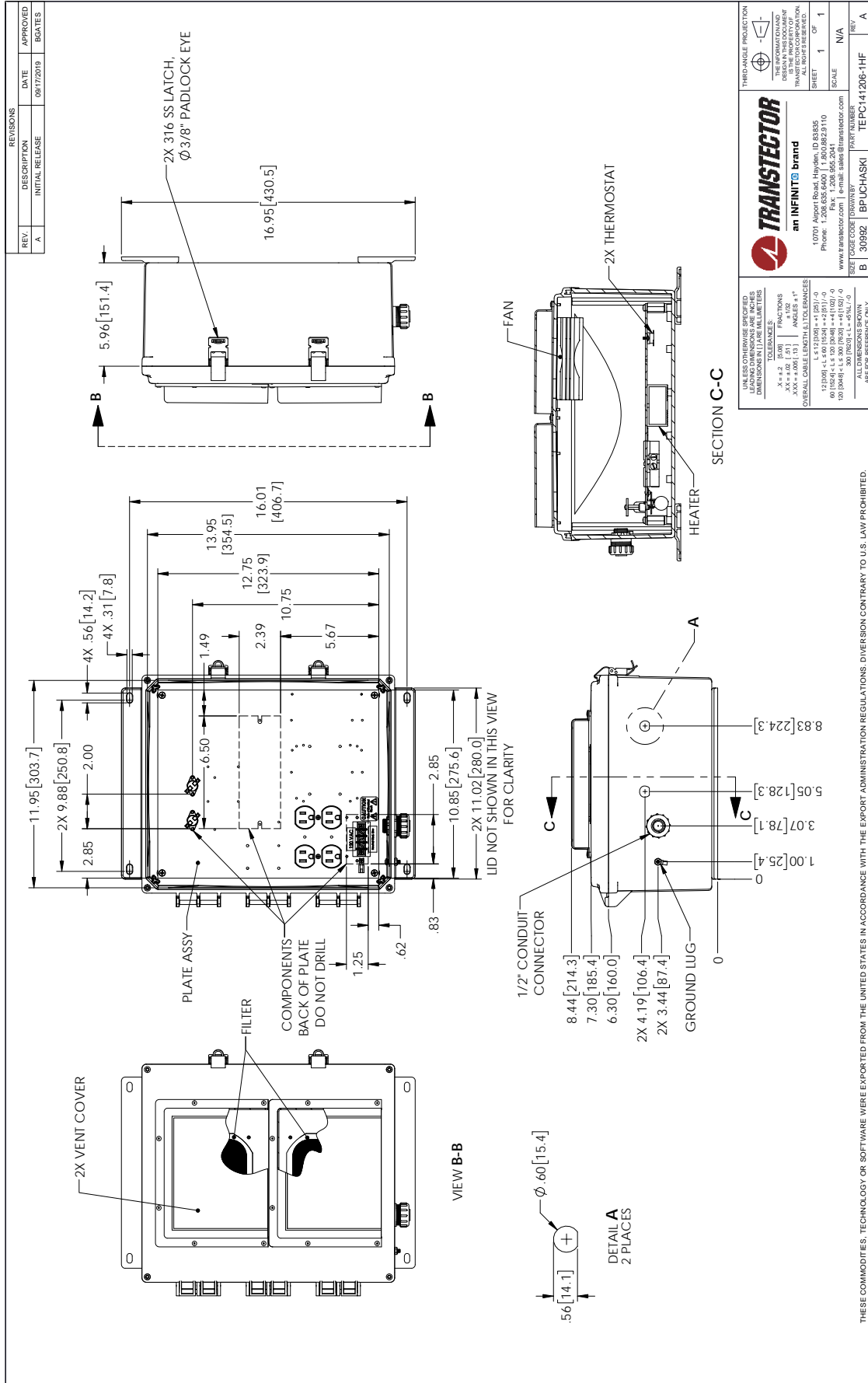
Click the following link (or enter part number in "SEARCH" on website) to obtain additional part information including price, inventory and certifications: [14x12x06 Polycarbonate Weatherproof Outdoor IP24 NEMA 3R Enclosure, 120 VAC MNT PLT, Mechanical Thermostat Heat & Fan DKGY TEPC141206-1HF](#)

URL: <https://www.transtector.com/14x12x06-polycarbonate-weatherproof-outdoor-ip24-nema-3r-tepc141206-1hf-p.aspx>

The information contained in this document is accurate to the best of our knowledge and representative of the part described herein. It may be necessary to make modifications to the part and/or the documentation of the part, in order to implement improvements. Transtector reserves the right to make such changes as required. Unless otherwise stated, all specifications are nominal. Transtector does not make any representation or warranty regarding the suitability of the part described herein for any particular purpose, and Transtector does not assume any liability arising out of the use of any part or documentation.

14x12x06 Polycarbonate Weatherproof Outdoor IP24 NEMA 3R Enclosure,
120 VAC MNT PLT, Mechanical Thermostat Heat & Fan DKG Y

TEPC141206-1HF CAD Drawing



REVISIONS		
REV.	DESCRIPTION	DATE
A	INITIAL RELEASE	09/17/2019
		APPROVED
		EGATES

UNLESS OTHERWISE SPECIFIED
LEADING DIMENSIONS ARE INCHES
DIMENSIONS IN PARENT BRACKETS
ARE MILLIMETERS

TOLERANCES:
X = ±.2 [5.08]
Y = ±.005 [0.127]
Z = ±.001 [0.025]
X, Y, Z = ±.001 [0.025]
ANGLES = ±1°

OVERALL CABLE LENGTH & TOLERANCES
10 FT (3.05) L ±.12 (3.05) ±.1 (25.4) -0
60 FT (18.29) L ±.50 (12.7) ±.1 (25.4) -0
120 FT (36.58) L ±.50 (12.7) ±.1 (25.4) -0
300 FT (91.44) L ±.50 (12.7) ±.1 (25.4) -0

THIRD-ANGLE PROJECTION

THE INFORMATION CONTAINED
HEREIN IS THE PROPERTY OF
TRANSTECTOR. ALL RIGHTS RESERVED.

SHEET 1 OF 1

SCALE N/A

10701 Airport Road, Hayden, ID 83435
Phone: 1-208-635-6400 Fax: 1-208-635-2110
www.transtector.com | e-mail: sales@transtector.com

SIZE CODE CODE [DRAWING] PART NUMBER

B 30992 BPUCHASKI TEPC141206-1HF A

SECTION C-C

THESE COMMODITIES, TECHNOLOGY OR SOFTWARE WERE EXPORTED FROM THE UNITED STATES IN ACCORDANCE WITH THE EXPORT ADMINISTRATION REGULATIONS. DIVERSION CONTRARY TO U.S. LAW PROHIBITED.

T:RAC