

14x12x06 Polycarbonate Weatherproof Outdoor IP66 NEMA 4X Enclosure,  
240 VAC Universal Outlet MNT PLT, Mechanical Thermostat Heat DKG Y

## TEPC141206-EH0



### Features

- High-Impact, UV Resistant Polycarbonate (Dark Gray)
- Stainless steel latches with padlock eye
- NEMA Type 4X / IP66\* rated (includes (4x) optional lid corner screws\*\*)
- Fully gasketed lid & user installed wall mounting brackets
- Features aluminum mounting plate with universal duplex socket for 240 VAC power & thermostat controlled heating system

### Applications

- Remote Wireless LAN WiFi equipment installations
- Indoor and outdoor installations
- Rapid Deployment Installations
- Corrosive environments & hotspot applications
- Protection of equipment from theft or damage

### Description

The box is a rugged weatherproof enclosure that is ideal for both indoor and outdoor applications. Constructed from High-Impact, UV Resistant Polycarbonate material that provides superior durability to impacts and ease of modification while maintaining minimum weight. It is well suited for high temperature or corrosive environments. The included wall mount brackets come uninstalled and bagged with their hardware inside of the enclosure. Once the brackets are installed the enclosure can be mounted directly to any flat wall surface provided proper screws are used into secure studs. The brackets, once installed, also allow you to use our TEF-PMT pole mount kits. The lid features a non-metallic hinge system that allows for quick removal & can be reattached just as quickly without the need for any tools. The enclosure comes with a pair of stainless-steel latches with padlock eyes allowing you to secure the enclosure from tampering. The enclosure comes in a Dark Gray (Pantone 422C)

#### Mounting Plate

The aluminum mounting plate included with the TEPC141206-EH0 features two 240 VAC Universal Euro outlets (contained in one duplex socket) and a terminal block for easy hook up to externally provided line power. The enclosure also features holes for two N-Bulkhead Lightning Protectors or Connectors, a grounding lug and cable conduit connector.

#### Heating

To help ensure trouble-free operation of electronic equipment, proper operating temperatures inside an enclosure needs to be controlled. With the built-in heater, internal temperatures can be better maintained. This model is ideal in Cold environments.

The TEPC141206-EH0 includes a thermostat-controlled 200W heater. The heater turns on when the internal temperature drops to 40° F (4° C) ±7° and turns off at 60° F (15° C) ±5°. The heater does not require the use of any of the AC outlets, leaving them all available for your equipment. No extra room for the heater is required since it is mounted underneath the plate.

The TEF-PMT series of pole mounting kits allow the populated enclosure to be securely mounted to a variety of different size poles.

Compatible versions include TEF-PMT13, TEF-PMT16, TEF-PMT28, TEF-PMT29, TEF-PMT30, & TEF-PMT33

\*Note: Enclosure ports (Cable conduit connector and N-type holes for lightning protectors or connectors) must be properly sealed to maintain NEMA Type 4X / IP66 rating

\*\*Note: If all four of the optional lid screws are installed the enclosure can achieve. NEMA 6P / IP68 however all of the openings would

Click the following link (or enter part number in "SEARCH" on website) to obtain additional part information including price, inventory and certifications:  
[14x12x06 Polycarbonate Weatherproof Outdoor IP66 NEMA 4X Enclosure, 240 VAC Universal Outlet MNT PLT, Mechanical Thermostat Heat DKG Y TEPC141206-EH0](#)

14x12x06 Polycarbonate Weatherproof Outdoor IP66 NEMA 4X Enclosure,  
240 VAC Universal Outlet MNT PLT, Mechanical Thermostat Heat DKG Y



## TEPC141206-EH0

have to be properly sealed with an IP68 rated plug, gland or coupler.

### Size

Outer Height	14.6 in	[370.84 mm]
Outer Width	12.6 in	[320.04 mm]
Outer Depth	7.4 in	[187.96 mm]
Inner Height	13.7 in	[347.98 mm]
Inner Width	11.7 in	[297.18 mm]
Inner Depth	5.9 in	[149.86 mm]
Weight	8.9 lbs	[4.04 kg]
Enclosure Material	Polycarbonate	

### Environmental Specifications

Temperature Rating	-40° to 265° F [-40° to 129° C]
NEMA Rating	4X
Ingress Protection (IP) Rating	IP66

### Compliance Certifications

UL Listed	No
-----------	----

Transtector Systems specializes in protection of highly sensitive, low voltage equipment through its patented, non-degrading silicon diode technology and custom filters. Our power quality expertise translates into a diverse product offering including AC, DC, and signal applications as well as integrated cabinets, power distribution panels and EMP hardened devices.

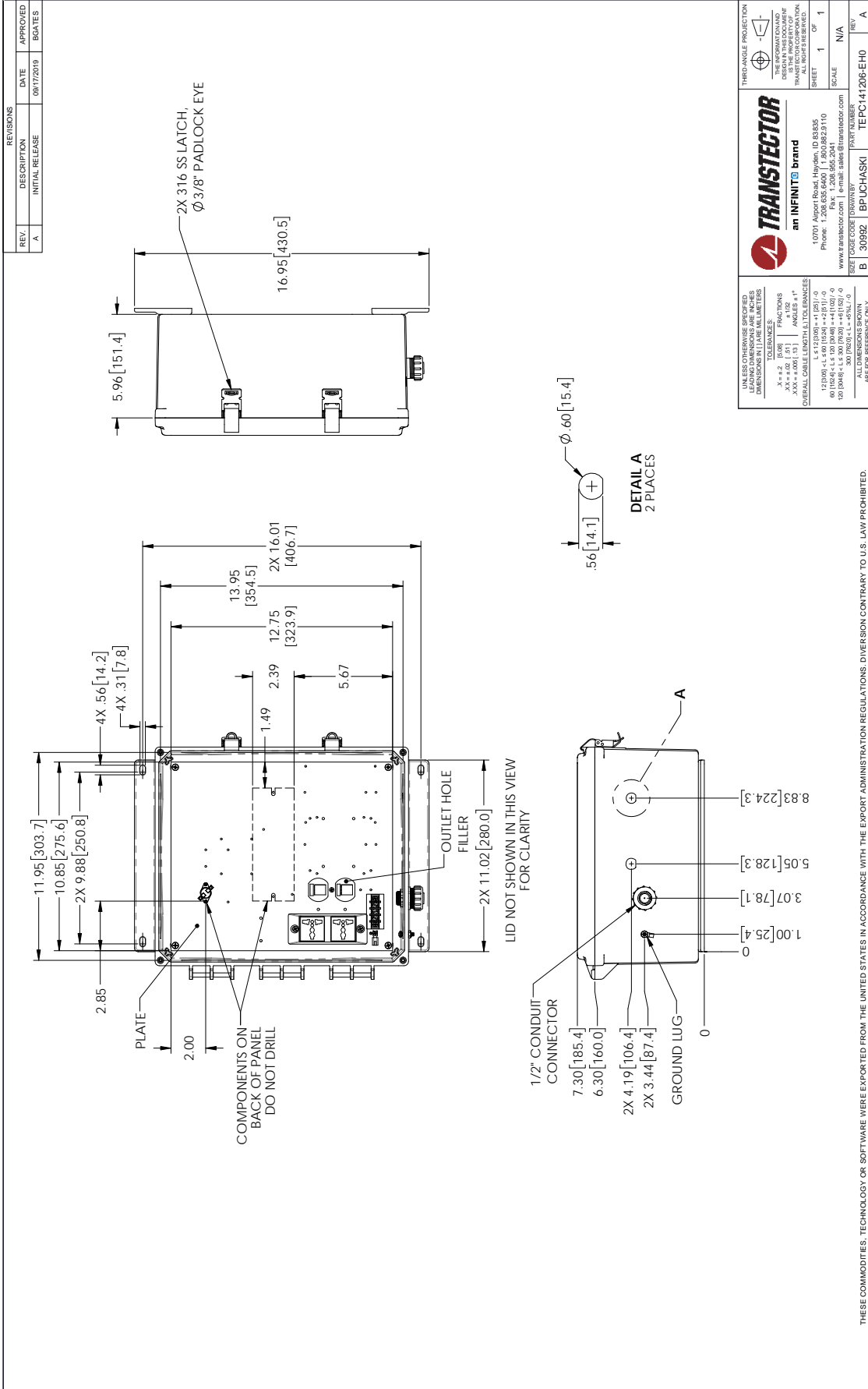
Click the following link (or enter part number in "SEARCH" on website) to obtain additional part information including price, inventory and certifications: [14x12x06 Polycarbonate Weatherproof Outdoor IP66 NEMA 4X Enclosure, 240 VAC Universal Outlet MNT PLT, Mechanical Thermostat Heat DKG Y TEPC141206-EH0](https://www.transtector.com/14x12x06-polycarbonate-weatherproof-outdoor-ip66-nema-4x-tepc141206-eh0-p.aspx)

URL: <https://www.transtector.com/14x12x06-polycarbonate-weatherproof-outdoor-ip66-nema-4x-tepc141206-eh0-p.aspx>

The information contained in this document is accurate to the best of our knowledge and representative of the part described herein. It may be necessary to make modifications to the part and/or the documentation of the part, in order to implement improvements. Transtector reserves the right to make such changes as required. Unless otherwise stated, all specifications are nominal. Transtector does not make any representation or warranty regarding the suitability of the part described herein for any particular purpose, and Transtector does not assume any liability arising out of the use of any part or documentation.

14x12x06 Polycarbonate Weatherproof Outdoor IP66 NEMA 4X Enclosure,  
240 VAC Universal Outlet MNT PLT, Mechanical Thermostat Heat DKG Y

TEPC141206-EH0 CAD Drawing



REVISIONS		
REV	DESCRIPTION	DATE
A	INITIAL RELEASE	09/17/2019
		APPROVED
		EGATES

UNLESS OTHERWISE SPECIFIED  
LEADING DIMENSIONS ARE INCHES  
DIMENSIONS IN PARENTHESES ARE  
MILLIMETERS

X = 1/2 FRACTIONS  
X.X = 1/16 ANGLES = 1°  
X.XX = .001 TOLERANCES  
OVERALL CABLE LENGTH & TOLERANCES  
101010 L 112009 = +1 (24) / -0  
6018204 L 5 300 (202) = +1 (102) / -0  
1010498 L 5 300 (202) = +1 (102) / -0  
300 (202) C L 5 300 (202) L 7 -0

THIRD-ANGLE PROJECTION

THE INFORMATION CONTAINED  
HEREIN IS THE PROPERTY OF  
TRANSTECTOR. ALL RIGHTS RESERVED.

SHEET 1 OF 1  
SCALE N/A

10701 Airport Road, Hayden, ID 83435  
Phone: 1.208.635.6400 Fax: 1.208.635.2310  
www.transtector.com | e-mail: sales@transtector.com

SIZE CODE [BROWN] PART NUMBER  
B 30992 BPUCHASKI TEPC141206-EH0 A