

20x16x08 UL® Listed Polycarbonate Weatherproof
Outdoor IP68 NEMA 6P Enclosure, Dark Gray

TEPC201608



Features

- UL® Listed High-Impact, UV Resistant Polycarbonate (Dark Gray)
- Non-metallic latches and a padlock eye
- NEMA Type 6P/ IP68 rated*
- Fully gasketed lid & integrated wall mount flange
- Low Profile, easily removable, Stainless Steel piano style hinge pin

Applications

- Remote Wireless LAN WiFi equipment installations
- Indoor and outdoor installations
- Rapid Deployment Installations
- Corrosive environments & hotspot applications
- Protection of equipment from theft or damage

Description

The box is a rugged weatherproof enclosure that is ideal for both indoor and outdoor applications. Constructed from High-Impact, UV Resistant Polycarbonate material that provides superior durability to impacts and ease of modification while maintaining minimum weight. It is well suited for high temperature or corrosive environments. The integrated wall mount flange allows the enclosure to be mounted directly to any flat wall surface provided proper screws are used into secure studs. The integrated flange also allows you to use compatible TEF-PMT pole mount kits to mount to a variety of pole diameters. The lid features a Stainless Steel piano style hinge pin system that allows for quick removal & can be reattached just as quickly for maximum access and flexibility to install equipment. The enclosure comes with a pair of Non-Metallic locking latches to provide a tight NEMA Type 6P/ IP68 rated* seal. The lid includes a padlock eye allowing you to secure the enclosure from tampering or unauthorized access. The enclosure comes in a Dark Gray (Pantone 422C)

The TEF-PMT series of pole mounting kits allow the populated enclosure to be securely mounted to a variety of different size poles.

Compatible versions include TEF-PMT35, TEF-PMT36, TEF-PMT37, TEF-PMT38 (sold separately)

Mounting standoffs inside the enclosure can be used to install backplates.

We offer three compatible aluminum back plate options (sold separately)

- TEF-PLATE41 with dimensions of 18.8" x 14.9"
- TEF-PLATE42 with dimensions of 19.4" x 15.4" which provides 10% more mounting space
- TEF-PLATE43 with dimensions of 21.1" x 17.1" which provides 20% more mounting space

We also offer a standard PVC back plate (sold separately)

- TEF-PLATE44 with dimensions of 18.8" x 14.9"

Additional compatible accessories available: (sold separately)

- TEPC-20-DIN35K DIN Rail Kit

*Note: Any holes or openings you might introduce must be properly sealed to maintain NEMA Type 6P / IP68 rating

Size

Outer Height 23.3 in [591.82 mm]

Click the following link (or enter part number in "SEARCH" on website) to obtain additional part information including price, inventory and certifications:
[20x16x08 UL® Listed Polycarbonate Weatherproof Outdoor IP68 NEMA 6P Enclosure, Dark Gray TEPC201608](#)

20x16x08 UL® Listed Polycarbonate Weatherproof
Outdoor IP68 NEMA 6P Enclosure, Dark Gray



TEPC201608

Outer Width	19 in	[482.6 mm]
Outer Depth	9.4 in	[238.76 mm]
Inner Height	21.1 in	[535.94 mm]
Inner Width	15.9 in	[403.86 mm]
Inner Depth	7.9 in	[200.66 mm]
Weight	16 lbs	[7.26 kg]
Enclosure Material	Polycarbonate	

Environmental Specifications

Temperature Rating	-40° to 265° F [-40° to 129° C]
NEMA Rating	6P
Ingress Protection (IP) Rating	IP68

Compliance Certifications

UL Listed	E514156
-----------	---------

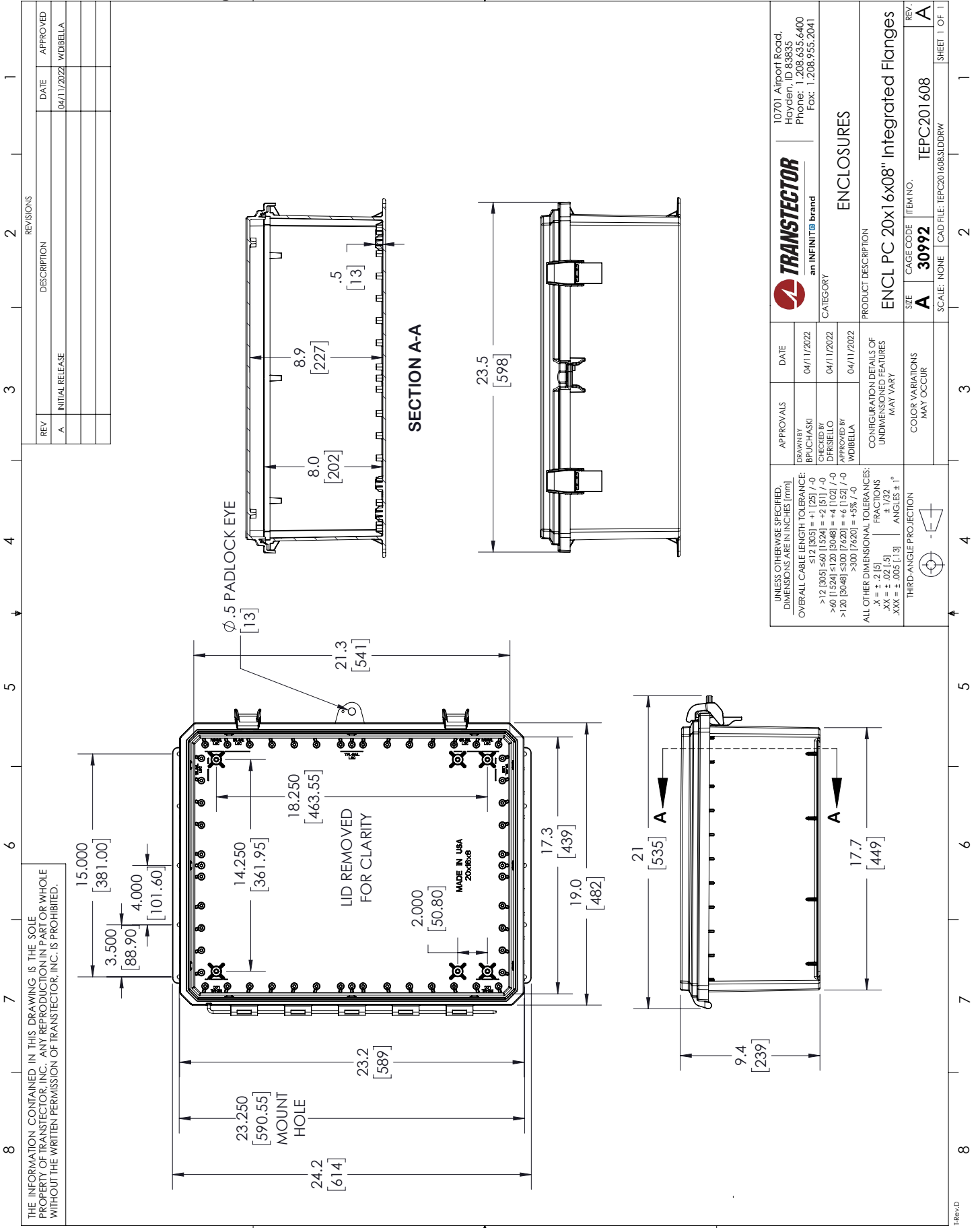
Transtector Systems specializes in protection of highly sensitive, low voltage equipment through its patented, non-degrading silicon diode technology and custom filters. Our power quality expertise translates into a diverse product offering including AC, DC, and signal applications as well as integrated cabinets, power distribution panels and EMP hardened devices.

Click the following link (or enter part number in “SEARCH” on website) to obtain additional part information including price, inventory and certifications: [20x16x08 UL® Listed Polycarbonate Weatherproof Outdoor IP68 NEMA 6P Enclosure, Dark Gray TEPC201608](https://www.transtector.com/20x16x08-ul-listed-polycarbonate-weatherproof-outdoor-ip68-nema-6p-enclosure-dark-gray-tepc201608)

URL: <https://www.transtector.com/20x16x08-ul-listed-polycarbonate-weatherproof-outdoor-ip68-tepc201608-p.aspx>

The information contained in this document is accurate to the best of our knowledge and representative of the part described herein. It may be necessary to make modifications to the part and/or the documentation of the part, in order to implement improvements. Transtector reserves the right to make such changes as required. Unless otherwise stated, all specifications are nominal. Transtector does not make any representation or warranty regarding the suitability of the part described herein for any particular purpose, and Transtector does not assume any liability arising out of the use of any part or documentation.

TEPC201608 CAD Drawing



REV	DESCRIPTION	DATE	APPROVED
A	INITIAL RELEASE	04/11/2022	WDIBELLA

 an INFINIT® brand		10701 Airport Road, Hayden, ID 83835 Phone: 1.208.635.6400 Fax: 1.208.955.2041	
APPROVALS	DATE	CATEGORY	
DESIGNED BY BPUCHASKI	04/11/2022	ENCLOSURES	
CHECKED BY CHRISTELLO	04/11/2022	PRODUCT DESCRIPTION	
APPROVED BY WDIBELLA	04/11/2022	ENCL PC 20x16x08" Integrated Flanges	
UNLESS OTHERWISE SPECIFIED, DIMENSIONS ARE IN INCHES (mm)		CONFIGURATION DETAILS OF UNDIMENSIONED FEATURES MAY VARY	
OVERALL CABLE LENGTH TOLERANCE:		COLOR VARIATIONS MAY OCCUR	
>12 [305] ≤12 [305] = +1 [25] / -0		SIZE	
>60 [1524] ≤120 [3048] = +4 [102] / -0		A	
>120 [3048] ≤300 [7620] = +6 [152] / -0		CAGE CODE	
>300 [7620] = +3% / -0		3092	
ALL OTHER DIMENSIONAL TOLERANCES:		ITEM NO.	
.X = ± .2 [5]		TEPC201608	
.XX = ± .02 [1.5]		SCALE: NONE	
.XXX = ± .005 [1.3]		CAD FILE: TEPC201608.SLDDRW	
THIRD-ANGLE PROJECTION		REV.	
		A	
		SHEET 1 OF 1	