

20x16x08 UL® Listed Polycarb Weatherproof Outdoor
IP68 NEMA 6P Enclosure, Rail Kit, Dark Gray

TERPC201608



Features

- UL® Listed High-Impact, UV Resistant Polycarbonate (Dark Gray)
- Non-metallic latches and a padlock eye
- NEMA Type 6P/ IP68 rated*
- Fully gasketed lid & integrated wall mount flange
- Rail Kit which comes with a Frame and set of four rails
- Low Profile, easily removable, Stainless Steel piano style hinge pin

Applications

- Remote Wireless LAN WiFi equipment installations
- Indoor and outdoor installations
- Rapid Deployment Installations
- Corrosive environments & hotspot applications
- Protection of equipment from theft or damage

Description

The box is a rugged weatherproof enclosure that is ideal for both indoor and outdoor applications. Constructed from High-Impact, UV Resistant Polycarbonate material that provides superior durability to impacts and ease of modification while maintaining minimum weight. It is well suited for high temperature or corrosive environments. The integrated wall mount flange allows the enclosure to be mounted directly to any flat wall surface provided proper screws are used into secure studs. The integrated flange also allows you to use compatible TEF-PMT pole mount kits to mount to a variety of pole diameters. The lid features a Stainless Steel piano style hinge pin system that allows for quick removal & can be reattached just as quickly for maximum access and flexibility to install equipment. The enclosure comes with a pair of Non-Metallic locking latches to provide a tight NEMA Type 6P/ IP68 rated* seal. The lid includes a padlock eye allowing you to secure the enclosure from tampering or unauthorized access. The included Rail Kit come uninstalled and bagged with its hardware inside of the enclosure. Once the rail kit is installed it provides more mounting options to install a front swing plate, side plates as well as the standard back plate. The rail kit also allows you to use a variety of additional accessories. The enclosure comes in a Dark Gray (Pantone 422C)

The TEF-PMT series of pole mounting kits allow the populated enclosure to be securely mounted to a variety of different size poles.

Compatible versions include TEF-PMT35, TEF-PMT36, TEF-PMT37, TEF-PMT38 (sold separately)

Mounting standoffs inside the enclosure can be used to install backplates.

We offer two compatible aluminum back plate options (sold separately)

- TEF-PLATE41 with dimensions of 18.8" x 14.9"
- TEF-PLATE42 with dimensions of 19.4" x 15.4" which provides 10% more mounting space

We also offer a standard PVC back plate (sold separately)

- TEF-PLATE44 with dimensions of 18.8" x 14.9"

Additional compatible accessories available: (sold separately)

- TEPC-20-DIN35K 35mm DIN Rail Kit
- TEPCG-DSTPK door stop kit
- TEPC20-BPKG Panel Pad Kit

Click the following link (or enter part number in "SEARCH" on website) to obtain additional part information including price, inventory and certifications:
[20x16x08 UL® Listed Polycarb Weatherproof Outdoor IP68 NEMA 6P Enclosure, Rail Kit, Dark Gray TERPC201608](#)

20x16x08 UL[®] Listed Polycarb Weatherproof Outdoor
IP68 NEMA 6P Enclosure, Rail Kit, Dark Gray



TERPC201608

- TEPC20-SDP aluminum side panel
- TEPC20-SWP aluminum swing panel

*Note: Any holes or openings you might introduce must be properly sealed to maintain NEMA Type 6P / IP68 rating

Size

Outer Height	23.3 in	[591.82 mm]
Outer Width	19 in	[482.6 mm]
Outer Depth	9.4 in	[238.76 mm]
Inner Height	21.1 in	[535.94 mm]
Inner Width	15.9 in	[403.86 mm]
Inner Depth	7.9 in	[200.66 mm]
Weight	18 lbs	[8.16 kg]
Enclosure Material	Polycarbonate	

Environmental Specifications

Temperature Rating	-40° to 265° F [-40° to 129° C]
NEMA Rating	6P
Ingress Protection (IP) Rating	IP68

Compliance Certifications

UL Listed	E514156
-----------	---------

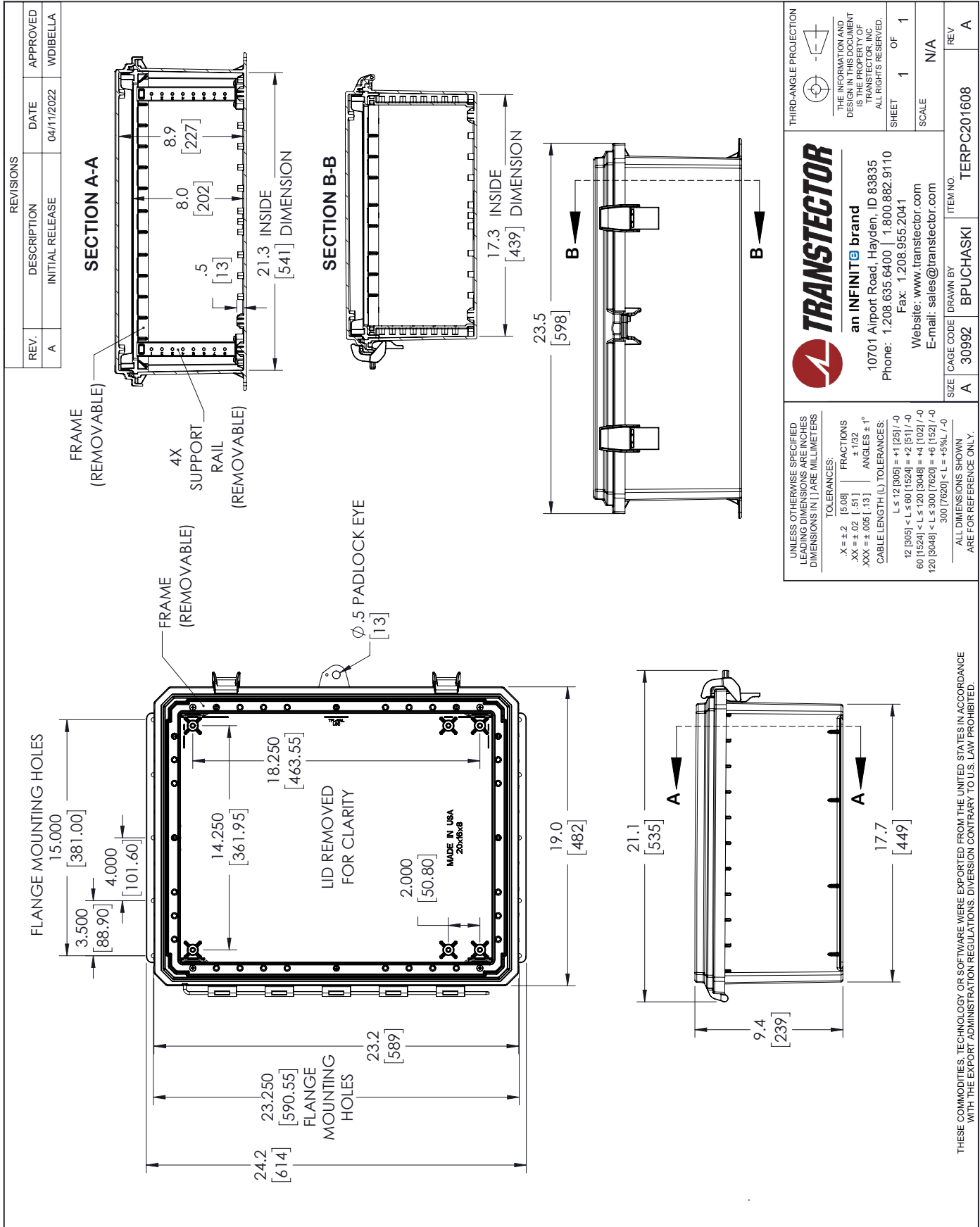
Transtector Systems specializes in protection of highly sensitive, low voltage equipment through its patented, non-degrading silicon diode technology and custom filters. Our power quality expertise translates into a diverse product offering including AC, DC, and signal applications as well as integrated cabinets, power distribution panels and EMP hardened devices.

Click the following link (or enter part number in "SEARCH" on website) to obtain additional part information including price, inventory and certifications: [20x16x08 UL[®] Listed Polycarb Weatherproof Outdoor IP68 NEMA 6P Enclosure, Rail Kit, Dark Gray TERPC201608](https://www.transtector.com/20x16x08-ul-listed-polycarbonate-weatherproof-outdoor-ip68-terpc201608-p.aspx)

URL: <https://www.transtector.com/20x16x08-ul-listed-polycarbonate-weatherproof-outdoor-ip68-terpc201608-p.aspx>

The information contained in this document is accurate to the best of our knowledge and representative of the part described herein. It may be necessary to make modifications to the part and/or the documentation of the part, in order to implement improvements. Transtector reserves the right to make such changes as required. Unless otherwise stated, all specifications are nominal. Transtector does not make any representation or warranty regarding the suitability of the part described herein for any particular purpose, and Transtector does not assume any liability arising out of the use of any part or documentation.

TERPC201608 CAD Drawing



REVISIONS			
REV.	DESCRIPTION	DATE	APPROVED
A	INITIAL RELEASE	04/11/2022	WDIBELLA

THIRD-ANGLE PROJECTION	
THE INFORMATION AND DESIGN IN THIS DOCUMENT IS THE PROPERTY OF TRANSTECTOR. ALL RIGHTS RESERVED.	
SHEET 1	OF 1
SCALE	N/A

TRANSTECTOR
 an INFINITE brand
 10701 Airport Road, Hayden, ID 83835
 Phone: 1.208.635.6400 | 1.800.882.9110
 Fax: 1.208.955.2041
 Website: www.transtector.com
 E-mail: sales@transtector.com

SIZE	CAGE CODE	DRAWN BY	ITEM NO.
A	30992	BPUCHASKI	TERPC201608

UNLESS OTHERWISE SPECIFIED LEADING DIMENSIONS ARE IN INCHES DIMENSIONS IN [] ARE MILLIMETERS

TOLERANCES:
 X = ±.2 [5.08]
 XX = ±.02 [.51]
 XXX = ±.005 [.13]

FRACTIONS:
 +1/32
 ANGLES ±1°

CABLE LENGTH (L) TOLERANCES:
 L ≤ 12 [305] = +1 [25] / -0
 12 [305] < L ≤ 60 [1524] = +2 [51] / -0
 60 [1524] < L ≤ 120 [3048] = +4 [102] / -0
 120 [3048] < L ≤ 300 [7620] = +6 [152] / -0
 300 [7620] < L = +5% / -0

ALL DIMENSIONS SHOWN ARE FOR REFERENCE ONLY.

THESE COMMODITIES, TECHNOLOGY OR SOFTWARE WERE EXPORTED FROM THE UNITED STATES IN ACCORDANCE WITH THE EXPORT ADMINISTRATION REGULATIONS. DIVERSION CONTRARY TO U.S. LAW PROHIBITED.