

12x10x06 Stainless Steel Weatherproof Outdoor IP24 NEMA 3R Enclosure, 120VAC Mount Plate Mechanical Thermostat Fan

TESS121006-10F



Features

- 16ga. Brushed 304 Stainless Steel
- 304 Stainless steel latch with padlock eye
- NEMA Type 3R / IP24 rated
- Fully gasketed vented lid with filters, integral welded mounting flange & 316 Stainless steel hinge and removable pin
- Features aluminum mounting plate with surge protected duplex 120 VAC outlets & thermostat controlled cooling system

Applications

- Electrical & Electronics Instruments, Controls & Components, Wireless LAN WiFi equipment
- Indoor and outdoor installations
- Rapid Deployment Installations
- EMI/RFI Sensitive environments/equipment
- Protection of equipment from theft or damage

Description

The box is a rugged weatherproof enclosure that is ideal for both indoor and outdoor applications. Constructed from 16ga. Brushed 304 Stainless Steel that provides superior protection against corrosion, chemicals and wet conditions. The enclosure is constructed with UV protected and impact resistant material to ensure protection in any environment. The lid includes two vents with installed rain guards and filters. The integrated welded mounting flange allows the enclosure to be mounted directly to any flat wall surface provided proper screws are used into secure studs. The enclosure can also be mounted to a wide range of pole diameters with one of our optional pole mounting hardware kits. The fully gasketed lid features a 316 stainless steel removable hinge pin that allows for quick removal & reattachment with only a pair of pliers. The enclosure comes with a 304 stainless steel latch with padlock eye allowing you to secure the enclosure from tampering.

Mounting Plate

The aluminum mounting plate included with the TESS121006-10F features standard surge protected duplex 120 VAC outlets and a terminal block for easy hook up to the externally provided line power. The enclosure also features holes for two N-Bulkhead Lightning Protectors or Connectors, a grounding lug and cable conduit connector.

Cooling

To help ensure trouble-free operation of electronic equipment, proper operating temperatures inside an enclosure needs to be maintained. With the built-in cooling fan, internal temperatures can be better maintained. This model is ideal in Hot environments.

The TESS121006-10F model includes a thermostat-controlled 6.8W fan. The high airflow, low noise fan used allows warm air to be actively pushed out while the lower vent passively pulls in outside air into the enclosure. Filters for both ports prevent foreign objects or debris from entering the enclosure. The fan turns on when the internal temperature rises to 120° F (49° C) ±5° and turns off at 90° F (32° C) ±10°. The cooling fan does not require the use of any of the AC outlets, leaving them all available for your equipment.

The TEF-PMT series of pole mounting kits allow the populated enclosure to be securely mounted to a variety of different size poles.

Compatible versions include TEF-PMT13, TEF-PMT16, TEF-PMT28, TEF-PMT29, TEF-PMT30, & TEF-PMT33

Click the following link (or enter part number in "SEARCH" on website) to obtain additional part information including price, inventory and certifications:
[12x10x06 Stainless Steel Weatherproof Outdoor IP24 NEMA 3R Enclosure, 120VAC Mount Plate Mechanical Thermostat Fan TESS121006-10F](#)

12x10x06 Stainless Steel Weatherproof Outdoor IP24 NEMA 3R Enclosure, 120VAC Mount Plate Mechanical Thermostat Fan



TESS121006-10F

Size

Outer Height	13.5 in	[342.9 mm]
Outer Width	11.25 in	[285.75 mm]
Outer Depth	5.83 in	[148.08 mm]
Inner Height	13.3 in	[337.82 mm]
Inner Width	10 in	[254 mm]
Inner Depth	5.69 in	[144.53 mm]
Weight	16.5 lbs	[7.48 kg]
Enclosure Material	304 Stainless Steel	

Environmental Specifications

Temperature Rating	-40° to 320° F [-40° to 160° C]
NEMA Rating	3R
Ingress Protection (IP) Rating	IP24

Compliance Certifications

UL Listed	No
-----------	----

Transtector Systems specializes in protection of highly sensitive, low voltage equipment through its patented, non-degrading silicon diode technology and custom filters. Our power quality expertise translates into a diverse product offering including AC, DC, and signal applications as well as integrated cabinets, power distribution panels and EMP hardened devices.

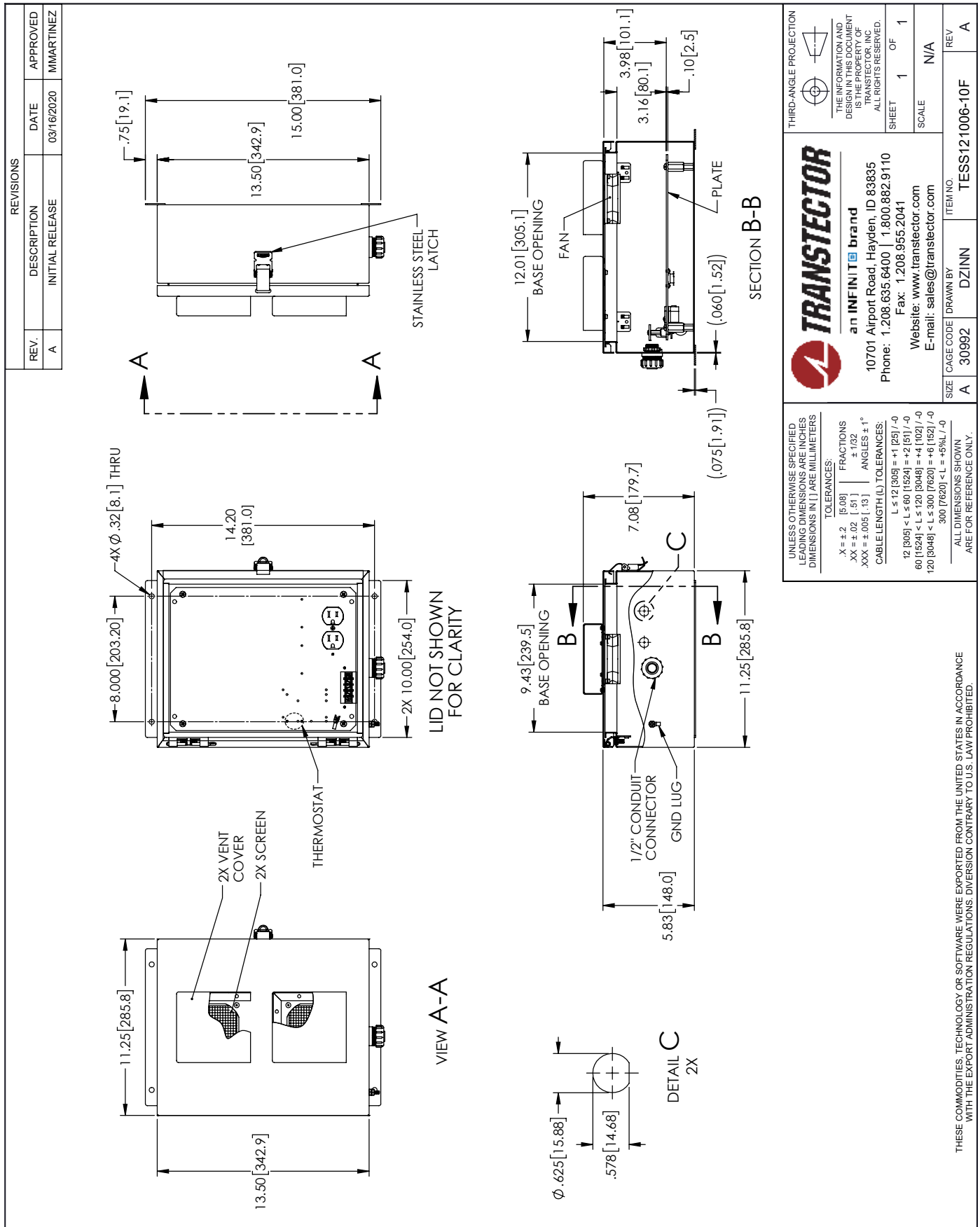
Click the following link (or enter part number in "SEARCH" on website) to obtain additional part information including price, inventory and certifications: [12x10x06 Stainless Steel Weatherproof Outdoor IP24 NEMA 3R Enclosure, 120VAC Mount Plate Mechanical Thermostat Fan TESS121006-10F](https://www.transtector.com/12x10x06-stainless-steel-weatherproof-outdoor-ip24-nema-3r-enclosure-120vac-mount-plate-mechanical-thermostat-fan-TESS121006-10F)

URL: <https://www.transtector.com/12x10x06-stainless-steel-weatherproof-nema-3r-enclosure-tess121006-10f-p.aspx>

The information contained in this document is accurate to the best of our knowledge and representative of the part described herein. It may be necessary to make modifications to the part and/or the documentation of the part, in order to implement improvements. Transtector reserves the right to make such changes as required. Unless otherwise stated, all specifications are nominal. Transtector does not make any representation or warranty regarding the suitability of the part described herein for any particular purpose, and Transtector does not assume any liability arising out of the use of any part or documentation.

12x10x06 Stainless Steel Weatherproof Outdoor IP24 NEMA 3R Enclosure,
120VAC Mount Plate Mechanical Thermostat Fan

TESS121006-10F CAD Drawing



REVISIONS			
REV.	DESCRIPTION	DATE	APPROVED
A	INITIAL RELEASE	03/16/2020	MMARTINEZ

TRANSTECTOR
an INFINITI brand

10701 Airport Road, Hayden, ID 83835
Phone: 1.208.635.6400 | 1.800.882.9110
Fax: 1.208.955.2041
Website: www.transtector.com
E-mail: sales@transtector.com

THIRD-ANGLE PROJECTION

THE INFORMATION AND DRAWING IS THE PROPERTY OF TRANSTECTOR, INC. ALL RIGHTS RESERVED.
SHEET 1 OF 1
SCALE N/A

UNLESS OTHERWISE SPECIFIED LEADING DIMENSIONS ARE INCHES DIMENSIONS IN [] ARE MILLIMETERS

TOLERANCES:
X = ±.2 [5.08] FRACTIONS
.XX = ±.02 [.51] ± 1/32
XXX = ±.005 [.13] ANGLES ± 1°
CABLE LENGTH (L) TOLERANCES:
L ≤ 12 [305] = +1 [25] / -0
12 [305] < L ≤ 60 [1524] = +2 [51] / -0
60 [1524] < L ≤ 120 [3048] = +4 [102] / -0
120 [3048] < L ≤ 300 [7620] = +6 [162] / -0
300 [7620] < L = +5% / -0

ALL DIMENSIONS SHOWN ARE FOR REFERENCE ONLY.

ITEM NO. TESS121006-10F
CAGE CODE [DRAWN BY] DZINN
REV A

THESE COMMODITIES, TECHNOLOGY OR SOFTWARE WERE EXPORTED FROM THE UNITED STATES IN ACCORDANCE WITH THE EXPORT ADMINISTRATION REGULATIONS. DIVERSION CONTRARY TO U.S. LAW PROHIBITED.