

14x12x07 Stainless Steel Weatherproof Outdoor
IP66 NEMA 4X Enclosure, 120VAC Mount Plate

TESS141207-100



Features

- 16ga. Brushed 304 Stainless Steel
- 304 Stainless steel latch with padlock eye
- NEMA Type 4X / IP66* rated
- Fully gasketed lid, integral welded mounting flange & 316 Stainless steel hinge and removable pin
- Features aluminum mounting plate with surge protected duplex 120 VAC outlets

Applications

- Electrical & Electronics Instruments, Controls & Components, Wireless LAN WiFi equipment
- Indoor and outdoor installations
- Rapid Deployment Installations
- EMI/RFI Sensitive environments/equipment
- Protection of equipment from theft or damage

Description

The box is a rugged weatherproof enclosure that is ideal for both indoor and outdoor applications. Constructed from 16ga. Brushed 304 Stainless Steel that provides superior protection against corrosion, chemicals and wet conditions. The enclosure is constructed with UV protected and impact resistant material to ensure protection in any environment. The integrated welded mounting flange allows the enclosure to be mounted directly to any flat wall surface provided proper screws are used into secure studs. The enclosure can also be mounted to a wide range of pole diameters with one of our optional pole mounting hardware kits. The fully gasketed lid features a 316 stainless steel removable hinge pin that allows for quick removal & reattachment with only a pair of pliers. The enclosure comes with a 304 stainless steel latch with padlock eye allowing you to secure the enclosure from tampering.

Mounting Plate

The aluminum mounting plate features standard surge protected duplex 120 VAC outlets and a terminal block for easy hook up to the externally provided line power. In addition, the unit can accept up to two optional bulkhead-mount N-Type lightning protectors to protect the coaxial cable runs.

The TEF-PMT series of pole mounting kits allow the populated enclosure to be securely mounted to a variety of different size poles.

Compatible versions include TEF-PMT13, TEF-PMT16, TEF-PMT28, TEF-PMT29, TEF-PMT30, & TEF-PMT33

*Note: Enclosure ports (Cable conduit connector and N-type holes for lightning protectors or connectors) must be properly sealed to maintain NEMA Type 4X / IP66 rating

Size

| | | |
|--------------------|---------------------|-------------|
| Outer Height | 14.5 in | [368.3 mm] |
| Outer Width | 13 in | [330.2 mm] |
| Outer Depth | 7.83 in | [198.88 mm] |
| Inner Height | 14.4 in | [365.76 mm] |
| Inner Width | 12 in | [304.8 mm] |
| Inner Depth | 7.69 in | [195.33 mm] |
| Weight | 17.5 lbs | [7.94 kg] |
| Enclosure Material | 304 Stainless Steel | |

Click the following link (or enter part number in "SEARCH" on website) to obtain additional part information including price, inventory and certifications:
[14x12x07 Stainless Steel Weatherproof Outdoor IP66 NEMA 4X Enclosure, 120VAC Mount Plate TESS141207-100](#)

14x12x07 Stainless Steel Weatherproof Outdoor
IP66 NEMA 4X Enclosure, 120VAC Mount Plate

TESS141207-100



Environmental Specifications

| | |
|--------------------------------|---------------------------------|
| Temperature Rating | -40° to 265° F [-40° to 129° C] |
| NEMA Rating | 4X |
| Ingress Protection (IP) Rating | IP66 |

Compliance Certifications

| | |
|-----------|----|
| UL Listed | No |
|-----------|----|

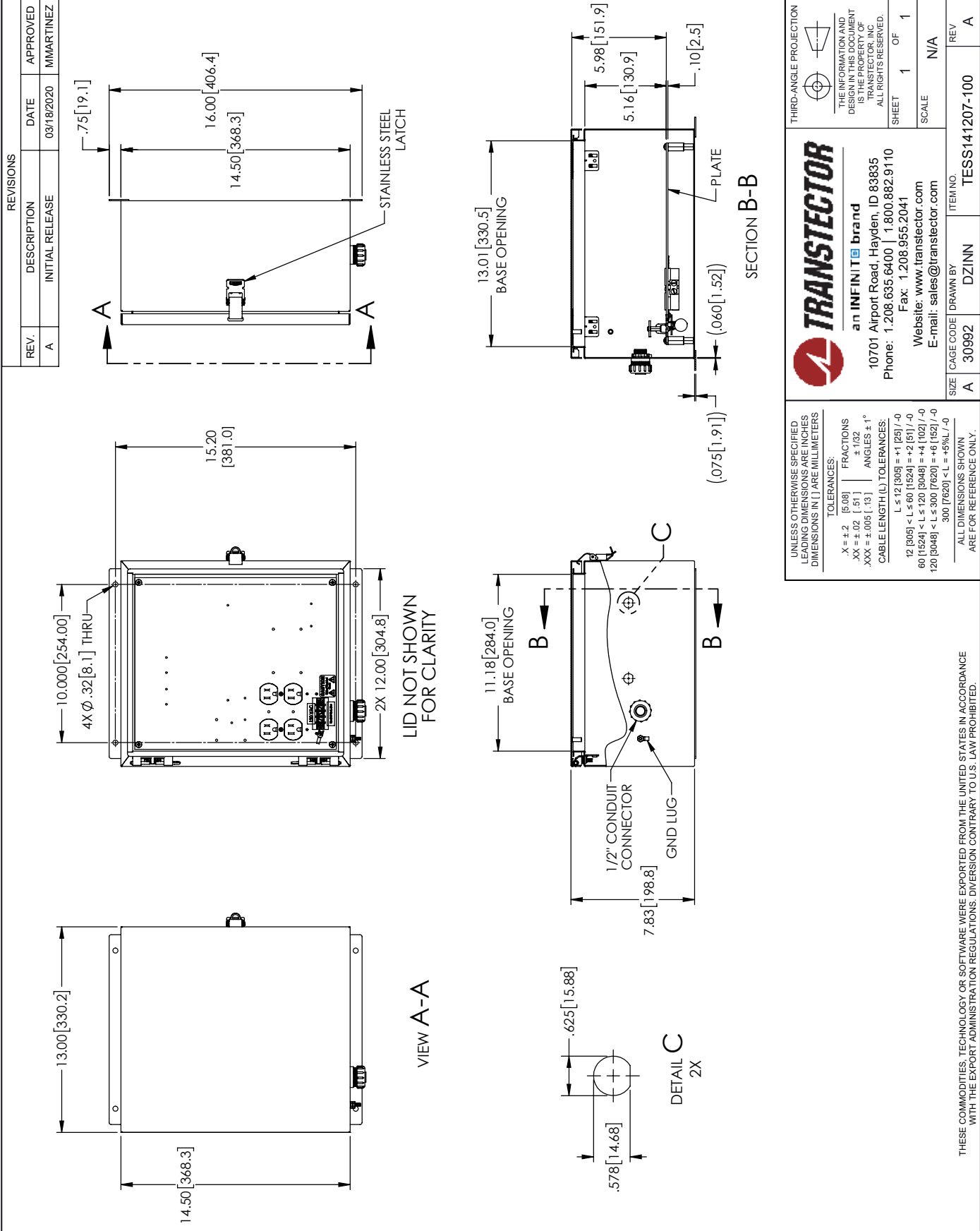
Transtector Systems specializes in protection of highly sensitive, low voltage equipment through its patented, non-degrading silicon diode technology and custom filters. Our power quality expertise translates into a diverse product offering including AC, DC, and signal applications as well as integrated cabinets, power distribution panels and EMP hardened devices.

Click the following link (or enter part number in "SEARCH" on website) to obtain additional part information including price, inventory and certifications: [14x12x07 Stainless Steel Weatherproof Outdoor IP66 NEMA 4X Enclosure, 120VAC Mount Plate TESS141207-100](https://www.transtector.com/14x12x07-stainless-steel-weatherproof-nema-4x-enclosure-tess141207-100-p.aspx)

URL: <https://www.transtector.com/14x12x07-stainless-steel-weatherproof-nema-4x-enclosure-tess141207-100-p.aspx>

The information contained in this document is accurate to the best of our knowledge and representative of the part described herein. It may be necessary to make modifications to the part and/or the documentation of the part, in order to implement improvements. Transtector reserves the right to make such changes as required. Unless otherwise stated, all specifications are nominal. Transtector does not make any representation or warranty regarding the suitability of the part described herein for any particular purpose, and Transtector does not assume any liability arising out of the use of any part or documentation.

TESS141207-100 CAD Drawing



| REVISIONS | | | |
|-----------|-----------------|------------|-----------|
| REV. | DESCRIPTION | DATE | APPROVED |
| A | INITIAL RELEASE | 03/18/2020 | MMARTINEZ |

THIRD-ANGLE PROJECTION

THE INFORMATION AND DRAWING IS THE PROPERTY OF TRANSECTOR, INC. ALL RIGHTS RESERVED.

SHEET 1 OF 1

SCALE N/A

TRANSECTOR
an INFINITI brand

10701 Airport Road, Hayden, ID 83835
Phone: 1.208.635.6400 | 1.800.882.9110
Fax: 1.208.955.2041
Website: www.transector.com
E-mail: sales@transector.com

ITEM NO. TESS141207-100

CAGE CODE 30992 DRAWN BY DZINN

REV. A