

14x12x07 Stainless Steel Weatherproof Outdoor IP24 NEMA 3R Enclosure,
120VAC Mount Plate, Solid State Therm. Power Saver Controlled Dual Fan

TESS141207-10FSD



Features

- 16ga. Brushed 304 Stainless Steel
- 304 Stainless steel latch with padlock eye
- NEMA Type 3R / IP24 rated
- Fully gasketed vented lid with filters, integral welded mounting flange & 316 Stainless steel hinge and removable pin
- Features aluminum mounting plate with surge protected duplex 120 VAC outlets & solid state power saver controlled Dual-Fan Control, each fan set to different temperature settings

Applications

- Electrical & Electronics Instruments, Controls & Components, Wireless LAN WiFi equipment
- Indoor and outdoor installations
- Rapid Deployment Installations
- EMI/RFI Sensitive environments/equipment
- Protection of equipment from theft or damage

Description

The box is a rugged weatherproof enclosure that is ideal for both indoor and outdoor applications. Constructed from 16ga. Brushed 304 Stainless Steel that provides superior protection against corrosion, chemicals and wet conditions. The enclosure is constructed with UV protected and impact resistant material to ensure protection in any environment. The lid includes two vents with installed rain guards and filters. The integrated welded mounting flange allows the enclosure to be mounted directly to any flat wall surface provided proper screws are used into secure studs. The enclosure can also be mounted to a wide range of pole diameters with one of our optional pole mounting hardware kits. The fully gasketed lid features a 316 stainless steel removable hinge pin that allows for quick removal & reattachment with only a pair of pliers. The enclosure comes with a 304 stainless steel latch with padlock eye allowing you to secure the enclosure from tampering.

Mounting Plate

The aluminum mounting plate included with the TESS141207-10FSD features standard surge protected duplex 120 VAC outlets and a terminal block for easy hook up to the externally provided line power. The enclosure also features holes for two N-Bulkhead Lightning Protectors or Connectors, a grounding lug and cable conduit connector.

Cooling

To help ensure trouble-free operation of electronic equipment, proper operating temperatures inside an enclosure need to be controlled. With the built-in dual cooling fans, internal temperatures can be better maintained. This model is ideal in Hot environments.

The “Power Saver” feature is designed to reduce electrical usage as well as extend the life of the fans which are controlled by our exclusive dual fan solid state controller. The relays provide independent control for each of the fans with two different turn-on temperatures. The relays also feature Zero Cross Detection for EMI reduction.

For cooling, the TESS141207-10FSD comes with two independently controlled 120 VAC 16.4W (32.8W total) cooling fans installed. The high airflow, low noise fans used allow warm air to be actively pushed out the top vent while the second fan on the lower vent when it turns on actively pulls in outside air into the enclosure. Filters for both ports prevent foreign objects or debris from entering the enclosure. The controller features improved temperature set point accuracy. The top fan has a turn-on temperature of 90° F (32° C). If the temperature continues to climb to 100°F (38°C), the lower fan turns on. When the temperature drops back to 91° F (33° C), the lower fan turns off.

Click the following link (or enter part number in “SEARCH” on website) to obtain additional part information including price, inventory and certifications:
[14x12x07 Stainless Steel Weatherproof Outdoor IP24 NEMA 3R Enclosure, 120VAC Mount Plate, Solid State Therm. Power Saver Controlled Dual Fan TESS141207-10FSD](#)

14x12x07 Stainless Steel Weatherproof Outdoor IP24 NEMA 3R Enclosure,
120VAC Mount Plate, Solid State Therm. Power Saver Controlled Dual Fan

TESS141207-10FSD



When the temperature drops to 81°F (27°C), the top fan turns off. The dual fan design offers energy efficiency. The cooling fans do not require the use of any of the AC outlets, leaving them all available for your equipment.

The TEF-PMT series of pole mounting kits allow the populated enclosure to be securely mounted to a variety of different size poles.

Compatible versions include TEF-PMT13, TEF-PMT16, TEF-PMT28, TEF-PMT29, TEF-PMT30, & TEF-PMT33

Size

Outer Height	14.5 in	[368.3 mm]
Outer Width	13 in	[330.2 mm]
Outer Depth	7.83 in	[198.88 mm]
Inner Height	14.4 in	[365.76 mm]
Inner Width	12 in	[304.8 mm]
Inner Depth	7.69 in	[195.33 mm]
Weight	21.1 lbs	[9.57 kg]
Enclosure Material	304 Stainless Steel	

Environmental Specifications

Temperature Rating	-40° to 265° F [-40° to 129° C]
NEMA Rating	3R
Ingress Protection (IP) Rating	IP24

Compliance Certifications

UL Listed	No
-----------	----

Transtector Systems specializes in protection of highly sensitive, low voltage equipment through its patented, non-degrading silicon diode technology and custom filters. Our power quality expertise translates into a diverse product offering including AC, DC, and signal applications as well as integrated cabinets, power distribution panels and EMP hardened devices.

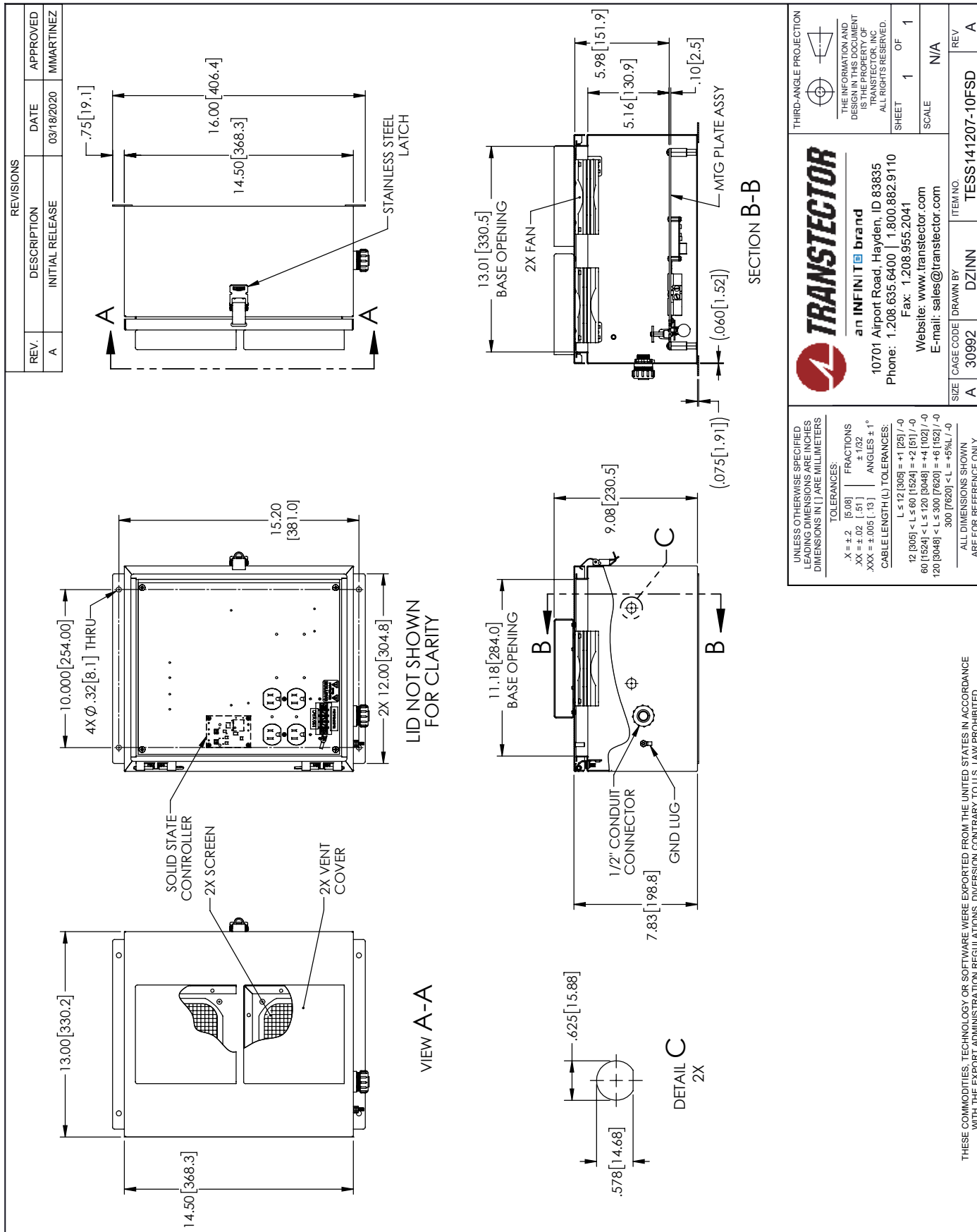
Click the following link (or enter part number in "SEARCH" on website) to obtain additional part information including price, inventory and certifications: [14x12x07 Stainless Steel Weatherproof Outdoor IP24 NEMA 3R Enclosure, 120VAC Mount Plate, Solid State Therm. Power Saver Controlled Dual Fan TESS141207-10FSD](https://www.transtector.com/14x12x07-stainless-steel-weatherproof-nema-3r-enclosure-tess141207-10fsd)

URL: <https://www.transtector.com/14x12x07-stainless-steel-weatherproof-nema-3r-enclosure-tess141207-10fsd-p.aspx>

The information contained in this document is accurate to the best of our knowledge and representative of the part described herein. It may be necessary to make modifications to the part and/or the documentation of the part, in order to implement improvements. Transtector reserves the right to make such changes as required. Unless otherwise stated, all specifications are nominal. Transtector does not make any representation or warranty regarding the suitability of the part described herein for any particular purpose, and Transtector does not assume any liability arising out of the use of any part or documentation.

14x12x07 Stainless Steel Weatherproof Outdoor IP24 NEMA 3R Enclosure, 120VAC Mount Plate, Solid State Therm. Power Saver Controlled Dual Fan

TESS141207-10FSD CAD Drawing



TRANSECTOR
an INFINITI brand

10701 Airport Road, Hayden, ID 83835
Phone: 1.208.635.6400 | 1.800.882.9110
Fax: 1.208.955.2041
Website: www.transector.com
E-mail: sales@transector.com

THIRD-ANGLE PROJECTION

THE INFORMATION AND DRAWING IS THE PROPERTY OF TRANSECTOR, INC. ALL RIGHTS RESERVED.
SHEET 1 OF 1
SCALE N/A

UNLESS OTHERWISE SPECIFIED LEADING DIMENSIONS ARE INCHES DIMENSIONS IN [] ARE MILLIMETERS

TOLERANCES:
X = ±.2 [5.08] FRACTIONS
.XX = ±.02 [.51] ± 1/32
XXX = ±.005 [.13] ANGLES ± 1°
CABLE LENGTH (L) TOLERANCES:
L ≤ 12 [305] = +1 [25] / -0
12 [305] < L ≤ 60 [1524] = +2 [51] / -0
60 [1524] < L ≤ 120 [3048] = +4 [102] / -0
120 [3048] < L ≤ 300 [7620] = +6 [152] / -0
300 [7620] < L = +5% L / -0

ALL DIMENSIONS SHOWN ARE FOR REFERENCE ONLY.

THESE COMMODITIES, TECHNOLOGY OR SOFTWARE WERE EXPORTED FROM THE UNITED STATES IN ACCORDANCE WITH THE EXPORT ADMINISTRATION REGULATIONS. DIVERSION CONTRARY TO U.S. LAW PROHIBITED.

ITEM NO. TESS141207-10FSD
CAGE CODE [DRAWN BY] DZINN
REV A