

24x24x10 UL® Listed Polycarbonate Weatherproof Outdoor
IP68 NEMA 6P Enclosure, Clear Lid, Dark Gray

TEWPC242410



Features

- UL® Listed High-Impact, UV Resistant Polycarbonate (Dark Gray)
- Non-metallic latches and a padlock eye
- NEMA Type 6P/ IP68 rated*
- Fully gasketed clear lid & user installed wall mounting brackets
- Low Profile, easily removable, Stainless Steel piano style hinge pin

Applications

- Remote Wireless LAN WiFi equipment installations
- Indoor and outdoor installations
- Rapid Deployment Installations
- Corrosive environments & hotspot applications
- Protection of equipment from theft or damage

Description

The box is a rugged weatherproof enclosure that is ideal for both indoor and outdoor applications. Constructed from High-Impact, UV Resistant Polycarbonate material that provides superior durability to impacts and ease of modification while maintaining minimum weight. It is well suited for high temperature or corrosive environments. The included wall mount brackets come uninstalled and bagged with their hardware inside of the enclosure. Once the brackets are installed the enclosure can be mounted directly to any flat wall surface provided proper screws are used into secure studs. The brackets, once installed, also allow you to use compatible TEF-PMT pole mount kits to mount to a variety of pole diameters. The clear lid features a Stainless Steel piano style hinge pin system that allows for quick removal & can be reattached just as quickly for maximum access and flexibility to install equipment. The clear lid provides an unobstructed view inside the enclosure allowing for the monitoring of installed equipment and its data readout, activity or warning lights without the need to open the lid. The enclosure comes with four Non-Metallic locking latches, two on the side and one each at the top and bottom of the lid to provide a tight NEMA Type 6P/ IP68 rated* seal. The lid includes a padlock eye allowing you to secure the enclosure from tampering or unauthorized access. The enclosure comes in a Dark Gray (Pantone 422C)

The TEF-PMT series of pole mounting kits allow the populated enclosure to be securely mounted to a variety of different size poles.

Compatible versions include TEF-PMT39, TEF-PMT40, TEF-PMT41, TEF-PMT42 (sold separately)

Mounting standoffs inside the enclosure can be used to install backplates.

We offer three compatible aluminum back plate options (sold separately)

- TEF-PLATE45 with dimensions of 21.0" x 21.0"
- TEF-PLATE46 with dimensions of 22.1" x 22.1" which provides 10% more mounting space
- TEF-PLATE47 with dimensions of 23.3" x 23.3" which provides 20% more mounting space

We also offer a standard PVC back plate (sold separately)

- TEF-PLATE48 with dimensions of 21.0" x 21.0"

Additional compatible accessories available: (sold separately)

- TEPC-24-DIN35K DIN Rail Kit

*Note: Any holes or openings you might introduce must be properly sealed to maintain NEMA Type 6P / IP68 rating

Click the following link (or enter part number in "SEARCH" on website) to obtain additional part information including price, inventory and certifications:
[24x24x10 UL® Listed Polycarbonate Weatherproof Outdoor IP68 NEMA 6P Enclosure, Clear Lid, Dark Gray TEWPC242410](#)

24x24x10 UL[®] Listed Polycarbonate Weatherproof Outdoor
IP68 NEMA 6P Enclosure, Clear Lid, Dark Gray



TEWPC242410

Size

Outer Height	25.3 in	[642.62 mm]
Outer Width	25.8 in	[655.32 mm]
Outer Depth	11.5 in	[292.1 mm]
Inner Height	23.3 in	[591.82 mm]
Inner Width	23.3 in	[591.82 mm]
Inner Depth	10.6 in	[269.24 mm]
Weight	30 lbs	[13.61 kg]
Enclosure Material	Polycarbonate	

Environmental Specifications

Temperature Rating	-40° to 265° F [-40° to 129° C]
NEMA Rating	6P
Ingress Protection (IP) Rating	IP68

Compliance Certifications

UL Listed	E514156
-----------	---------

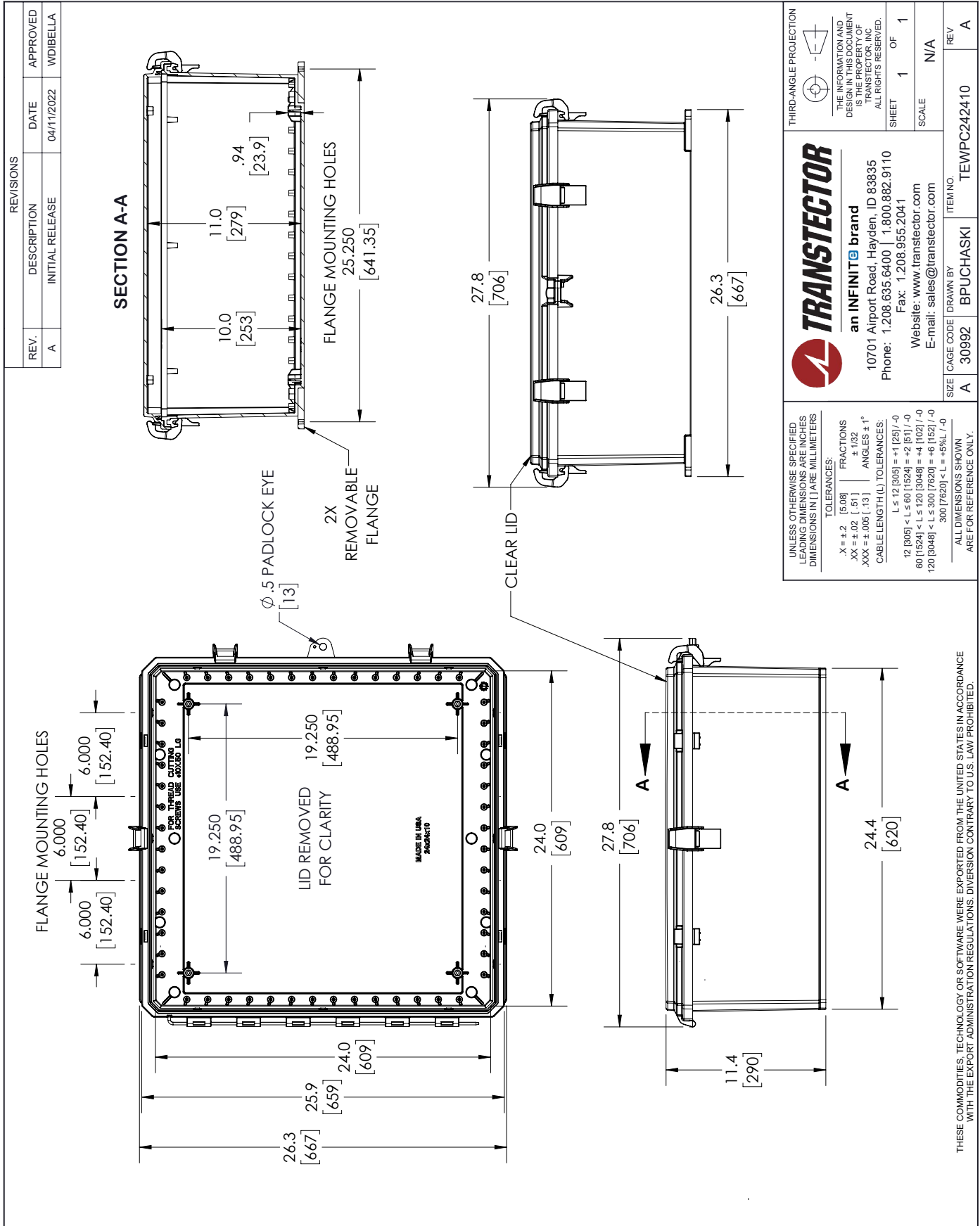
Transtector Systems specializes in protection of highly sensitive, low voltage equipment through its patented, non-degrading silicon diode technology and custom filters. Our power quality expertise translates into a diverse product offering including AC, DC, and signal applications as well as integrated cabinets, power distribution panels and EMP hardened devices.

Click the following link (or enter part number in "SEARCH" on website) to obtain additional part information including price, inventory and certifications: [24x24x10 UL[®] Listed Polycarbonate Weatherproof Outdoor IP68 NEMA 6P Enclosure, Clear Lid, Dark Gray TEWPC242410](https://www.transtector.com/24x24x10-ul-listed-polycarbonate-weatherproof-outdoor-ip68-tewpc242410-p.aspx)

URL: <https://www.transtector.com/24x24x10-ul-listed-polycarbonate-weatherproof-outdoor-ip68-tewpc242410-p.aspx>

The information contained in this document is accurate to the best of our knowledge and representative of the part described herein. It may be necessary to make modifications to the part and/or the documentation of the part, in order to implement improvements. Transtector reserves the right to make such changes as required. Unless otherwise stated, all specifications are nominal. Transtector does not make any representation or warranty regarding the suitability of the part described herein for any particular purpose, and Transtector does not assume any liability arising out of the use of any part or documentation.

TEWPC242410 CAD Drawing



REVISIONS			
REV.	DESCRIPTION	DATE	APPROVED
A	INITIAL RELEASE	04/11/2022	WDIBELLA

THIRD-ANGLE PROJECTION

THE INFORMATION AND DESIGN IN THIS DOCUMENT IS THE PROPERTY OF TRANSTECTOR. ALL RIGHTS RESERVED.

SHEET 1 OF 1

SCALE N/A

REV A

ITEM NO. TEWPC242410

CAGE CODE DRAWN BY BPUCHASKI

SIZE A

UNLESS OTHERWISE SPECIFIED LEADING DIMENSIONS ARE IN INCHES DIMENSIONS IN [] ARE MILLIMETERS

TOLERANCES:

X = ±.2 [5.08]

XX = ±.02 [.51]

XXX = ±.005 [.13]

FRACTIONS ±1/32

ANGLES ±1°

CABLE LENGTH (L) TOLERANCES:

L ≤ 12 [305] = ±.1 [25] / -0

12 [305] < L ≤ 60 [1524] = ±.2 [51] / -0

60 [1524] < L ≤ 120 [3048] = ±.4 [102] / -0

120 [3048] < L ≤ 300 [7620] = ±.6 [152] / -0

300 [7620] < L = ±.5% / -0

ALL DIMENSIONS SHOWN ARE FOR REFERENCE ONLY.

TRANSTECTOR

an INFINITE brand

10701 Airport Road, Hayden, ID 83835

Phone: 1.208.635.6400 | 1.800.882.9110

Fax: 1.208.955.2041

Website: www.transtector.com

E-mail: sales@transtector.com

THESE COMMODITIES, TECHNOLOGY OR SOFTWARE WERE EXPORTED FROM THE UNITED STATES IN ACCORDANCE WITH THE EXPORT ADMINISTRATION REGULATIONS. DIVERSION CONTRARY TO U.S. LAW PROHIBITED.