

## Data Surge Protector, Indoor, 5 Gigabit Ethernet



### TSJ-5GBE-TT

## Data Surge Protector, Indoor, 5 Gigabit Ethernet

### Features

- 5 Gigabit Ethernet compatible
- Hybrid SASD, GDT protection technology
- Shielded RJ-45 connectivity
- DIN-Rail mounting clip
- Integral ground wire, lug

### Applications

- 5 Gigabit Ethernet Networks
- Telecommunications Base Stations
- IT & Data Centers
- Security Cameras
- Wireless Access Points
- Point-to-Point Links

### Description

Data surge protector (also known as SPD or lightning protector) TSJ-5GBE-TT from Transtector, is an Indoor style SPD that utilizes state of the art hybrid SASD, GDT technology to protect equipment in 5 Gigabit Ethernet networks, while remaining transparent to data throughput. Transtector data surge protectors are available in stock with same day shipping.

### Electrical Specifications

Description	Minimum	Typical	Maximum	Units
Connectors		Shielded RJ45		
Compatible Cables		Cat 6/6A STP, Cat 7 STP		
Data Protocols		5 Gigabit Ethernet		
Data Rate			5,000	Mb/s
Characteristic Impedance			100	Ohms
Series Impedance (Data)			1	Ohms
Capacitance (Differential)			30	pF
Capacitance (Common)			5	pF

### Surge Protection Specification

Description	Minimum	Typical	Maximum	Units
Surge Protection Technology		SASD, GDT		
Protected Pins		[1,2], [3,6], [4,5], [7,8]		
Protection Modes		L-G, L-L		

Click the following link (or enter part number in "SEARCH" on website) to obtain additional part information including price, inventory and certifications:  
[Data Surge Protector, Indoor, 5 Gigabit Ethernet TSJ-5GBE-TT](#)

## Data Surge Protector, Indoor, 5 Gigabit Ethernet



### TSJ-5GBE-TT

## Data Surge Protector, Indoor, 5 Gigabit Ethernet

Response Time	5	ns
---------------	---	----

### Mechanical Specifications

#### Size

Height	1 in	[25.4 mm]
Width	2.5 in	[63.5 mm]
Depth	1.75 in	[44.45 mm]
Weight	0.3 lbs	[136.08 g]
Housing Material and Plating	Powder Coated Aluminum	

### Environmental Specifications

Operating Temperature	-40 to +75 deg C
Storage Temperature	-40 to +75 deg C

Mount Type	Din-Rail, Inline
Grounding	Internal Ground Wire, Lug

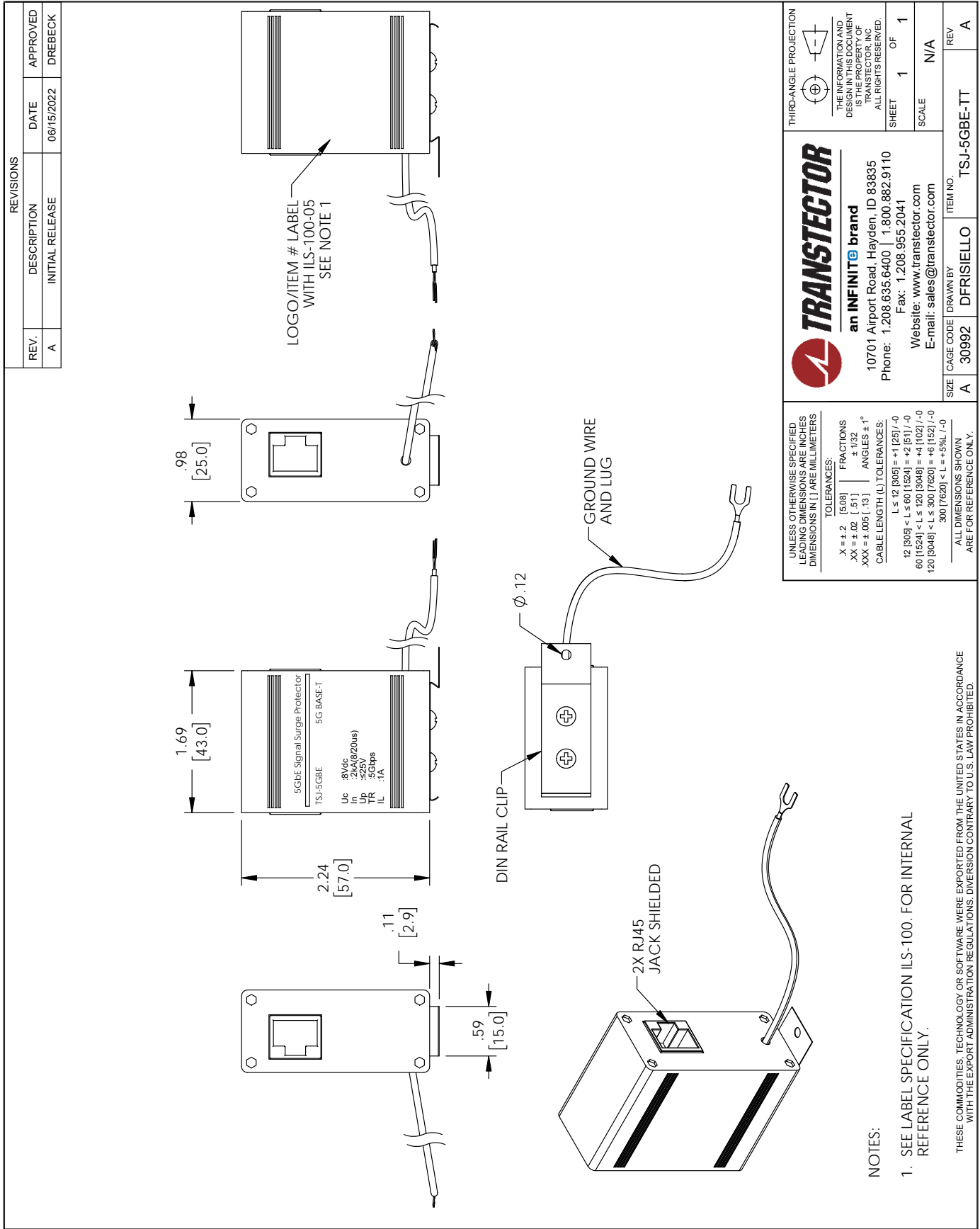
Transtector Systems specializes in protection of highly sensitive, low voltage equipment through its patented, non-degrading silicon diode technology and custom filters. Our power quality expertise translates into a diverse product offering including AC, DC, and signal applications as well as integrated cabinets, power distribution panels and EMP hardened devices.

Click the following link (or enter part number in "SEARCH" on website) to obtain additional part information including price, inventory and certifications: [Data Surge Protector, Indoor, 5 Gigabit Ethernet TSJ-5GBE-TT](#)

URL: <https://www.transtector.com/TSJ-5GBE-TT-p.aspx>

The information contained in this document is accurate to the best of our knowledge and representative of the part described herein. It may be necessary to make modifications to the part and/or the documentation of the part, in order to implement improvements. Transtector reserves the right to make such changes as required. Unless otherwise stated, all specifications are nominal. Transtector does not make any representation or warranty regarding the suitability of the part described herein for any particular purpose, and Transtector does not assume any liability arising out of the use of any part or documentation.

TSJ-5GBE-TT CAD Drawing



**TRANSTECTOR**  
an INFINIT® brand

10701 Airport Road, Hayden, ID 83835  
Phone: 1.208.635.6400 | 1.800.882.9110  
Fax: 1.208.955.2041  
Website: www.transvector.com  
E-mail: sales@transvector.com

THIRD-ANGLE PROJECTION

THE INFORMATION AND DESIGN IN THIS DOCUMENT IS THE PROPERTY OF TRANSTECTOR, INC. ALL RIGHTS RESERVED.

SHEET 1 OF 1

SCALE N/A

REV A

ITEM NO. TSJ-5GBE-TT

SIZE A

CAGE CODE 30992

DRAWN BY DFRISIELLO

UNLESS OTHERWISE SPECIFIED LEADING DIMENSIONS ARE IN INCHES DIMENSIONS IN [ ] ARE MILLIMETERS

TOLERANCES:

X = ±.2 [5.08] | FRACTIONS ±.005 [0.127] | ANGLES ± 1°

XX = ±.02 [0.51] | ±.002 [0.051] | ANGLES ± 1°

XXX = ±.005 [0.127] | ±.001 [0.0254] | ANGLES ± 1°

CABLE LENGTH (L) TOLERANCES:

L ≤ 12 [305] = ±1.25 [31.75] / -0

12 [305] < L ≤ 60 [1524] = ±2 [51] / -0

60 [1524] < L ≤ 120 [3048] = ±4 [102] / -0

120 [3048] < L ≤ 300 [7620] = ±6 [152] / -0

300 [7620] < L = +5.9% / -0

ALL DIMENSIONS SHOWN ARE FOR REFERENCE ONLY.

NOTES:

1. SEE LABEL SPECIFICATION ILS-100. FOR INTERNAL REFERENCE ONLY.

THESE COMMODITIES, TECHNOLOGY OR SOFTWARE WERE EXPORTED FROM THE UNITED STATES IN ACCORDANCE WITH THE EXPORT ADMINISTRATION REGULATIONS. DIVERSION CONTRARY TO U.S. LAW PROHIBITED.

T-Rev D