

WARNING

1. Important safety instructions. Read and understand all instructions before installing this product. Save these instructions for future reference.
2. The suppressor will interrupt communications in the event of self-sacrifice.
3. Installation shall be performed by qualified electrical technician only.



ALPU HT

HT-NO-ALPU-GBEP

INSTALLATION INSTRUCTIONS



Thank you for your recent purchase of our surge protection solution. Your satisfaction with our product and service is important to us. If you have any questions, comments or concerns, please contact us at 800.882.9110 or visit our website at transtector.com. We look forward to continuing to serve your protection needs.

HT-NO-ALPU-GBEP

Installation Instructions

The HT-NO-ALPU-GBEP protection module is designed to provide EMP protection for equipment and facilities per Department of Homeland Security (DHS) and the Alliance for Telecommunications Industry Solutions (ATIS) guidelines, and have been tested for survivability to the peak threat levels of the harsh Early Time (E1) and Intermediate Time (E2) High-Altitude (HEMP) environments as defined in MIL-STD-188-125.

The HT-NO-ALPU-GBEP utilizes high-power, solid-state Silicon Avalanche Suppression Diodes (SASD) to provide robust, non-degrading protection against nominal transients. These modules are intended for use in high speed 10/100BT Power Over Ethernet communications networks both indoors and outdoors, including wall or pole mount applications.

MOUNTING

Mount the device as close to the equipment to be protected as possible using the provided hardware. Mount the unit in the orientation shown, with the strain reliefs facing the ground. Mount the unit to an outside surface using the two 4" center-to-center mounting holes using #10 hardware.

WIRING

Remove the cover by removing the two captive screws on the front of the unit. Connect one CAT 6A shielded Ethernet cable between the unprotected unit and the suppressor using the left internal RJ45 jack labeled "in". Connect a second CAT 6A shielded Ethernet cable between the unit to be protected and the suppressor using the right internal RJ45 jack labeled "out". Secure the two CAT 6A shielded cables using the built in cable retention. Torque strain relief to 10-15 in-lbf. Replace cover and secure with the two captive screws. Torque to 40-45 in-lbf.

RECOMMENDED CABLE

CAT 6A shielded with shielded RJ45 connectors

GROUNDING

Proper grounding is critical for adequate HEMP protection. Keep ground wire as short as possible between the surge protector ground and the site grounding point. Less than 3 feet, #6 AWG stranded wire is recommended for optimum performance. Refer to local codes and equipment manufacturers standards before installation.

The optimum ground connection on the metal enclosure unit at the mounting flange on either side is shown in Figure 2. Attach ground wire using 1/4" hardware provided in the location shown in Figure 2. Torque to 40-45 in-lbf.

USAGE AND MAINTENANCE

Each module should be scheduled for periodic inspection to ensure the module is operational and all wire connections are tight. Disconnect power prior to inspection and maintenance. If the module is damaged, contact Transtector for replacement.

AVAILABLE ACCESSORIES

A pole mount adapter kit (pn 1000-1164) is available to meet installations on a wide range of pole diameters from 2" metal fence poles to 10" diameter utility poles.

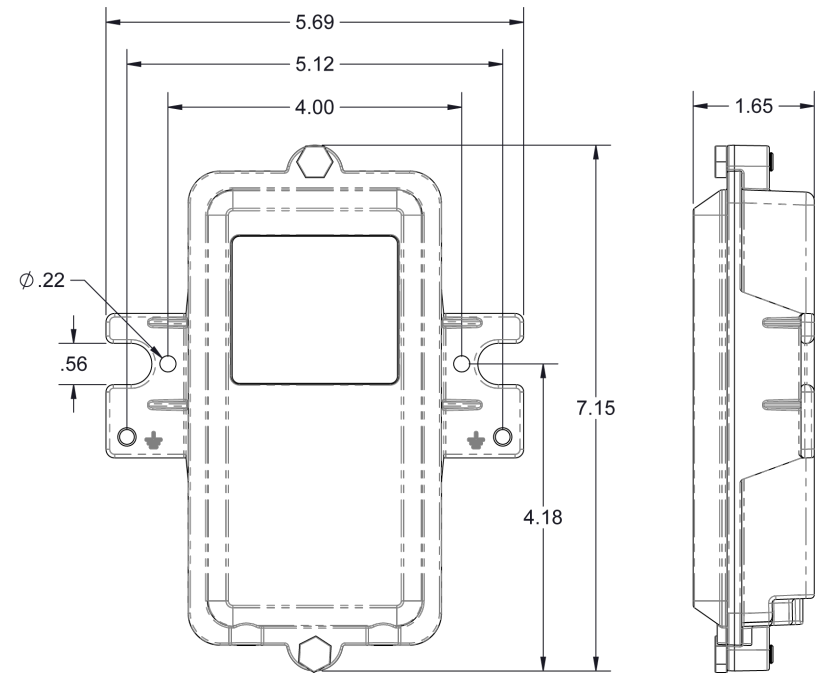


Figure 1. Mechanical outline drawing (inches)

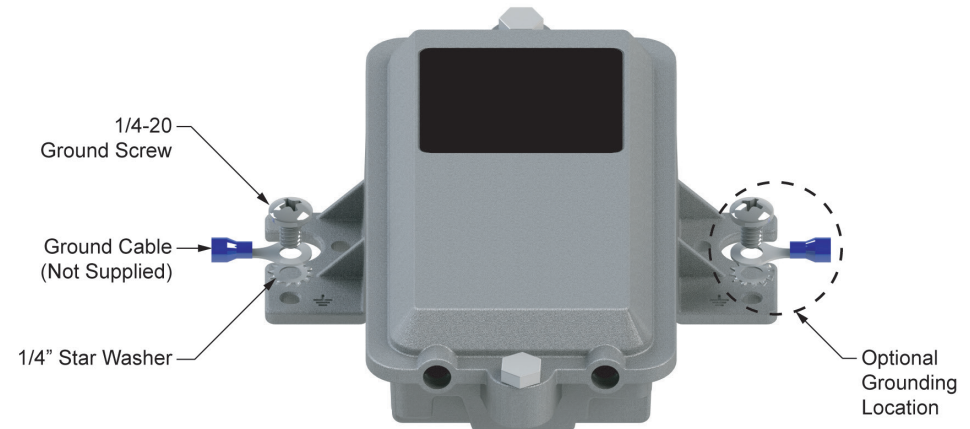


Figure 2. Ground Cable Installation